

ADD ON

AGENDA	
Section	Consent
Item No.	<b>II B</b>

Meeting Date
<b>November 5, 2015</b>



**AGENDA REPORT**  
 BREVARD COUNTY BOARD OF COUNTY COMMISSIONERS

SUBJECT:	PRELIMINARY PLAT/FINAL ENGINEERING APPROVAL RE: HERITAGE ISLE TRACT E DEVELOPER: LENAR HOMES, LLC FISCAL IMPACT: NONE
	PLANNING AND DEVELOPMENT DEPARTMENT/LAND DEVELOPMENT

**Requested Action:**

In accordance with Section 62-2808(e), it is requested that the Board of County Commissioners grant preliminary plat and final engineering approval for the above referenced project.

**Summary Explanation & Background:**

There are three stages of review of subdivision plan approval: the pre-application conference, the preliminary plat/final engineering plan review, and the final plat review. The pre-application conference for the above project was held on June 25, 2015. The current request is for approval of the preliminary plat and final engineering plans, which is the second stage of approval. The final engineering portion of this stage includes payment of inspection fees and the approval to begin construction of the infrastructure necessary to support the subdivision. Upon completion of the infrastructure or posting a performance bond, the final plat may be reviewed and recorded, to complete the third stage of the review process. Staff has reviewed the final engineering plans and preliminary plat for compliance with existing applicable ordinances.

The Heritage Isle PUD is approved to allow a total of 2100 units. The Heritage Isle Tract E subdivision contains 22 single family lots on approximately 5.44 acres. Tract E is the last remaining residential tract in Heritage Isle and would bring the final lot count in the PUD to 1,652 total units.

The Heritage Isle PUD subdivision is located north of Wickham Road, south of Judge Fran Jamieson Way and 1,400 feet west of Tavistock Drive.

Reference: 15SD00009

Contact: Tad Calkins Phone: 321-633-2065

Clerk to the Board instruction: none

Exhibits Attached: Location maps

Contract /Agreement (If attached): Reviewed by County Attorney Yes   PR

County Manager

Stockton Whitten

Department Director / Extension  
 Robin M. Sobrino, AICP  
 Planning & Development Department Ext. 5-2069



Tammy Etheridge, Clerk to the Board, 400 South Street • P.O. Box 999, Titusville, Florida 32781-0999

Telephone: (321) 637-2001  
Fax: (321) 264-6972

November 6, 2015

MEMORANDUM

TO: Robin Sobrino, Planning and Development Director          Attn: Tad Calkins  
RE: Item II.B., Preliminary Plat/Final Engineering Approval for Heritage Isle Tract E – Lennar Homes, LLC

The Board of County Commissioners, in regular session on November 5, 2015, granted preliminary plat and final engineering approval for the Heritage Isle Tract E – Lennar Homes, LLC project.

Your continued cooperation is always appreciated.

Sincerely,

BOARD OF COUNTY COMMISSIONERS  
SCOTT ELLIS, CLERK

Tammy Etheridge, Deputy Clerk

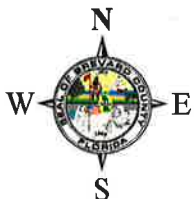
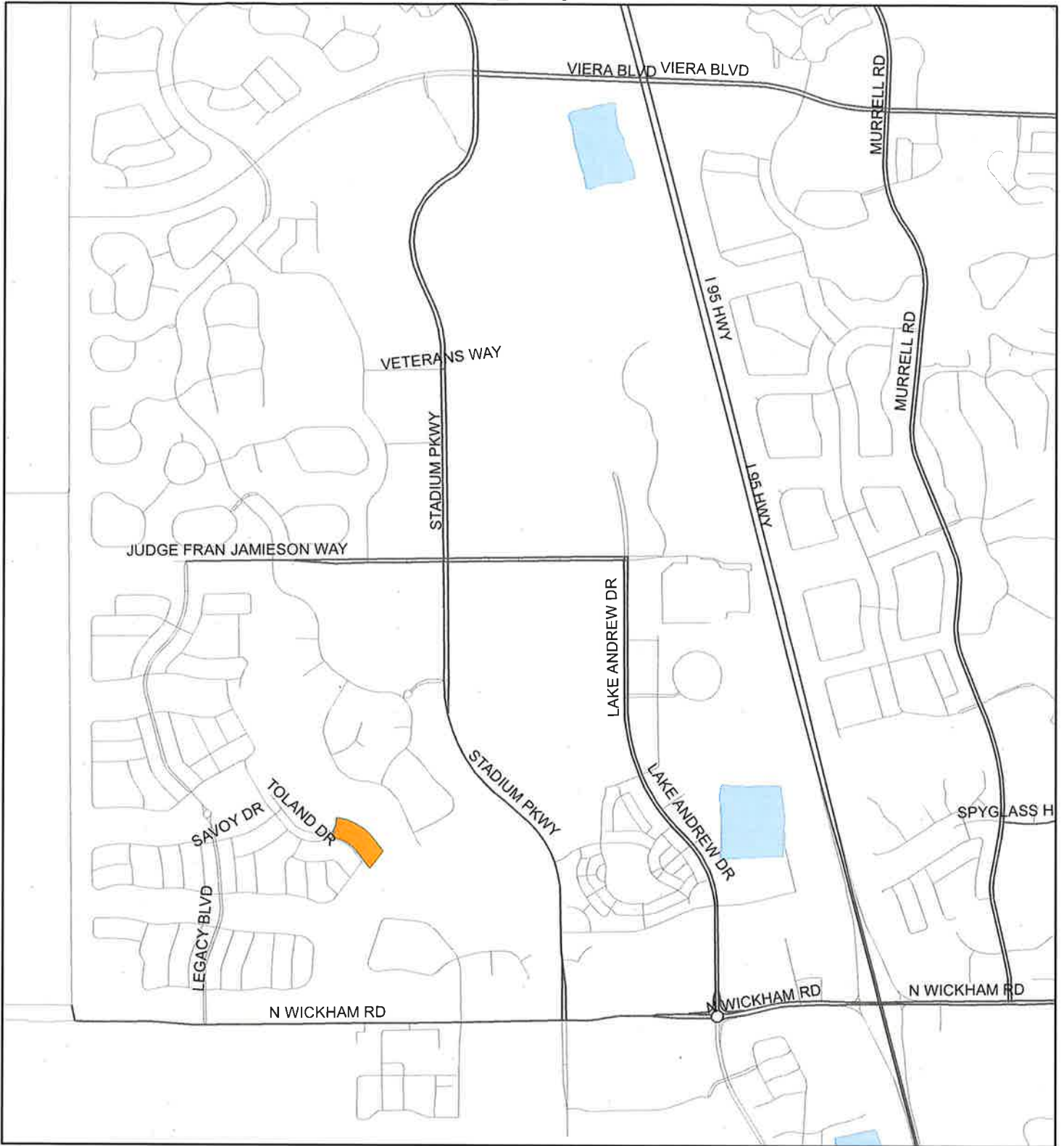
for

/af



# LOCATION MAP

HERITAGE ISLE TRACT E  
15SD00010\_Heritage Isle Tract E



1:24,000 or 1 inch = 2,000 feet

 Subject Property

This map was compiled from recorded documents and does not reflect an actual survey. The Brevard County Board of County Commissioners does not assume responsibility for errors or omissions hereon.

Produced by the Brevard County Planning and Zoning Office - GIS Section Date: 10/13/2015