

Meeting Date
April 28, 2015



AGENDA	
Section	CONSENT AGENDA
Item No.	<i>II.C.3</i>

AGENDA REPORT
 BREVARD COUNTY BOARD OF COUNTY COMMISSIONERS

SUBJECT:	ACKNOWLEDGE RECEIPT OF FY 2013-2014 ANNUAL REPORT, ENDING SEPTEMBER 30, 2014, FOR THE CITY OF SATELLITE BEACH COMMUNITY REDEVELOPMENT AGENCY
DEPT/OFFICE:	BUDGET OFFICE

Requested Action:

It is requested that the Board acknowledge receipt of the 2013-2014 annual report, ending September 30, 2014, for the City of Satellite Beach Community Redevelopment Agency.

Summary Explanation & Background:

In accordance with Florida Statute 163.356(3)(c), the City of Satellite Beach is providing the Brevard County Board of County Commissioners a copy of their FY 2014 Community Redevelopment Agency (CRA) Annual Report.

The report is on file in the Budget Office.

Fiscal Impact: There is no fiscal impact.

Clerk to the Board instruction: Maintain necessary documents for records retention.

Exhibits Attached: No attachments are provided. The 2014 Annual Report for the City of Satellite Beach Community Redevelopment Agency are maintained in the Budget Office

Contract /Agreement (If attached):		Reviewed by County Attorney	Yes	<input type="checkbox"/>	No	<input type="checkbox"/>	PR	<input type="checkbox"/>
County Manager		Assistant County Manager		Department Director / Extension				
Stockton Whitten <i>[Signature]</i>				Tom Rosenberg/52854 <i>[Signature]</i> Thomas.rosenberg.brevardcounty.us				



Tammy Etheridge, Clerk to the Board, 400 South Street • P.O. Box 999, Titusville, Florida 32781-0999

Telephone: (321) 637-2001
Fax: (321) 264-6972

April 29, 2015

M E M O R A N D U M

TO: Tom Rosenberg, Budget Director

RE: Item II.C.3., Acknowledge Receipt of Fiscal Year 2013-2014 Annual Report Ending September 30, 2014, for City of Satellite Beach Community Redevelopment Agency

The Board of County Commissioners, in regular session on April 28, 2015, acknowledged receipt of the Fiscal Year 2013-2014 annual report, ending September 30, 2014, for the City of Satellite Beach Community Redevelopment Agency.

Your continued cooperation is always appreciated.

Sincerely,

BOARD OF COUNTY COMMISSIONERS
SCOTT ELLIS, CLERK

Tammy Etheridge

Tammy Etheridge, Deputy Clerk

/af

cc: Finance

CITY OF SATELLITE BEACH, FLORIDA

**565 CASSIA BOULEVARD 32937-3116
(321) 773-4407
(321) 779-1388 FAX**



INCORPORATED 1957

March 17, 2015

Stockton Whitten, County Manager
Brevard County
2725 Judge Fran Jamieson Way, Building C
Viera, FL 32940

RE: City of Satellite Beach Community Redevelopment Agency
FY 13/14 Annual Report

Dear Mr. Whitten:

At the March 4, 2015 Community Redevelopment Agency meeting, the Agency approved the CRA Annual Report for FY 13/14. Enclosed is a copy of the CRA Annual Report.

Please do not hesitate to contact our office should you need further information.

Sincerely,

Leonor Olexa
City Clerk

Encl.



City of Satellite Beach
Community Redevelopment Agency
Annual Report
FY 2013/2014



Pelican Beach Park

The Community Redevelopment Agency (CRA) Background:

The City of Satellite Beach, in partnership with Brevard County, created the CRA in 2002 to address aging conditions and outdated lot and access patterns along the commercial corridors. Since then, the City has invested in beach access projects, park projects, façade grant improvements, community policing initiatives, land acquisition, and roadway projects. The CRA recently revised its Redevelopment Plan with greater emphasis on completing the projected goals of the CRA within the next 5 years. The new plan was adopted September 17, 2014 by Ordinance 1097.

Board Members:

Frank Catino, Chairman

Lorraine Gott, Vice Chair

Dominick Montanaro, Member

Mark Brimer, Member

Sheryl Denan, member

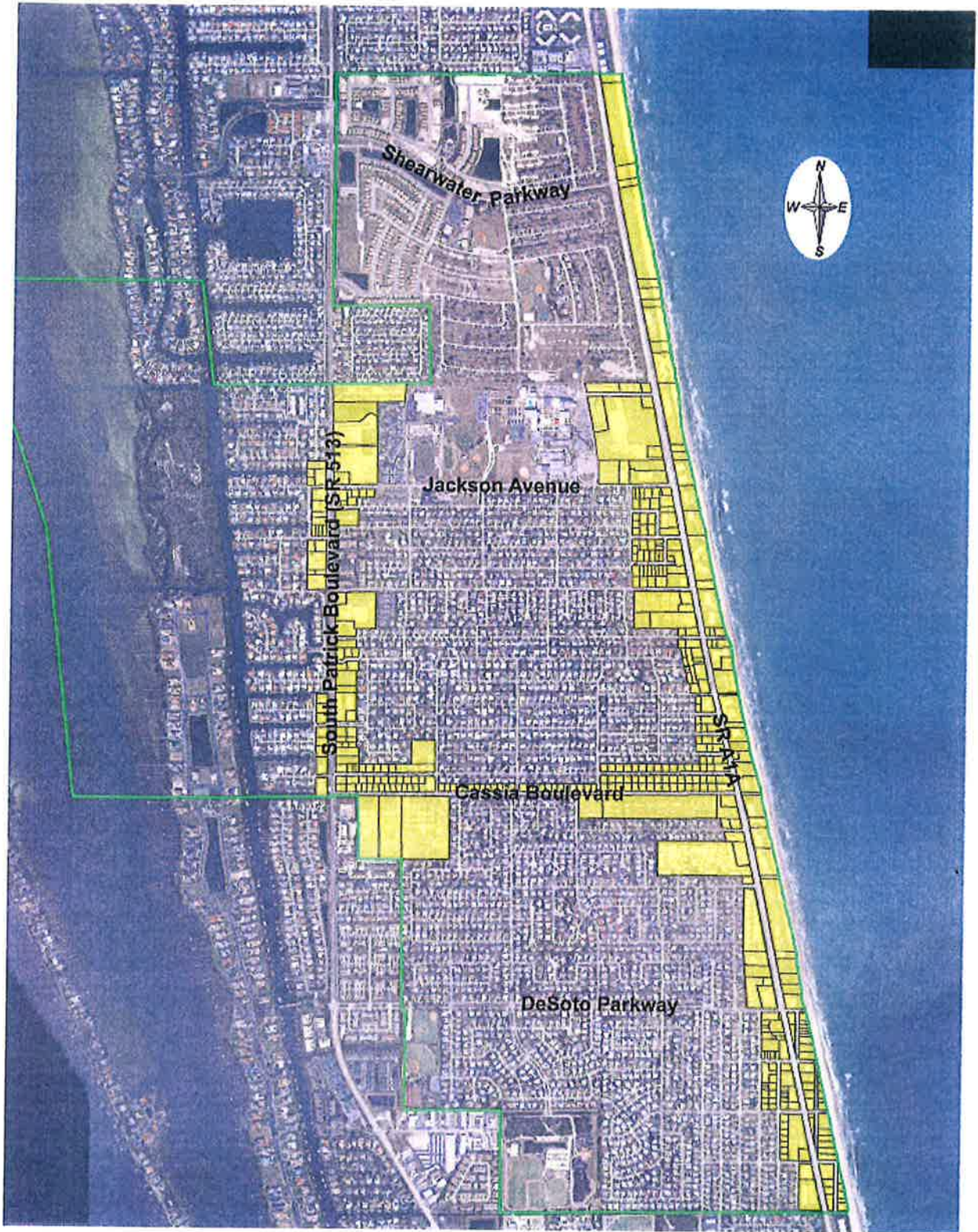
CRA Staff:

Courtney H. Barker, AICP, Executive Director

Clifford Shepard, P.A, General Counsel

John Stone, CRA Administrator

Leonor Olexa, CRA Secretary



Satellite Beach Community Redevelopment District

FY13/14 and Current Projects

[1] Beach Access Improvements:

The CRA has continued our efforts to increase accesses to the beachfront and improve the quality of the facilities. Our CRA believes that our business community thrives when we bring in more visitors to our parks and our beaches. With a thriving business community and improved facilities, our residents enjoy a wonderful quality of life.

Beach Access projects, as well as accompanied streetscape projects, are represented strongly in our Redevelopment Plan:

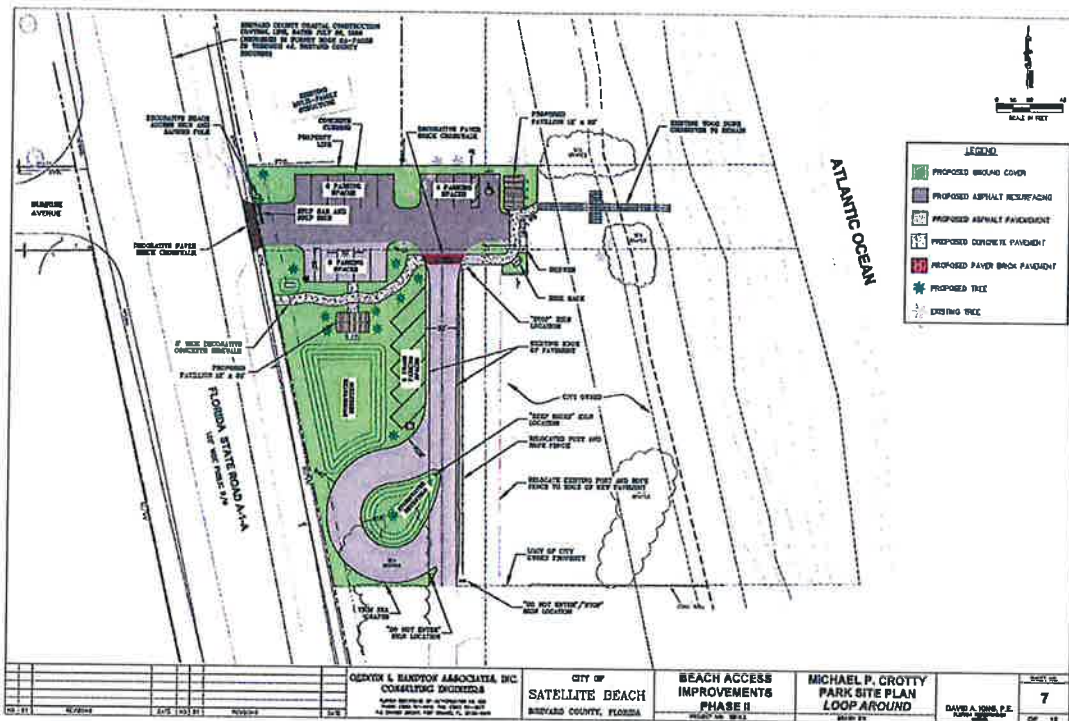
- Obtain additional right-of-way for extending sidewalks, streetscape and pedestrian areas (page 18).
- Maintain or enhance the quality of the natural environment, as it is a public amenity to be enriched and enjoyed (page 16~17).
- Improve the existing 14 beach access points, both the “drive-to” and the “walk-to” access points by creating uniform, themed signage, signature landscaping, and installing pavers to denote pedestrian cross-walk areas (page 24~26).

Our current beach access improvements include the following:

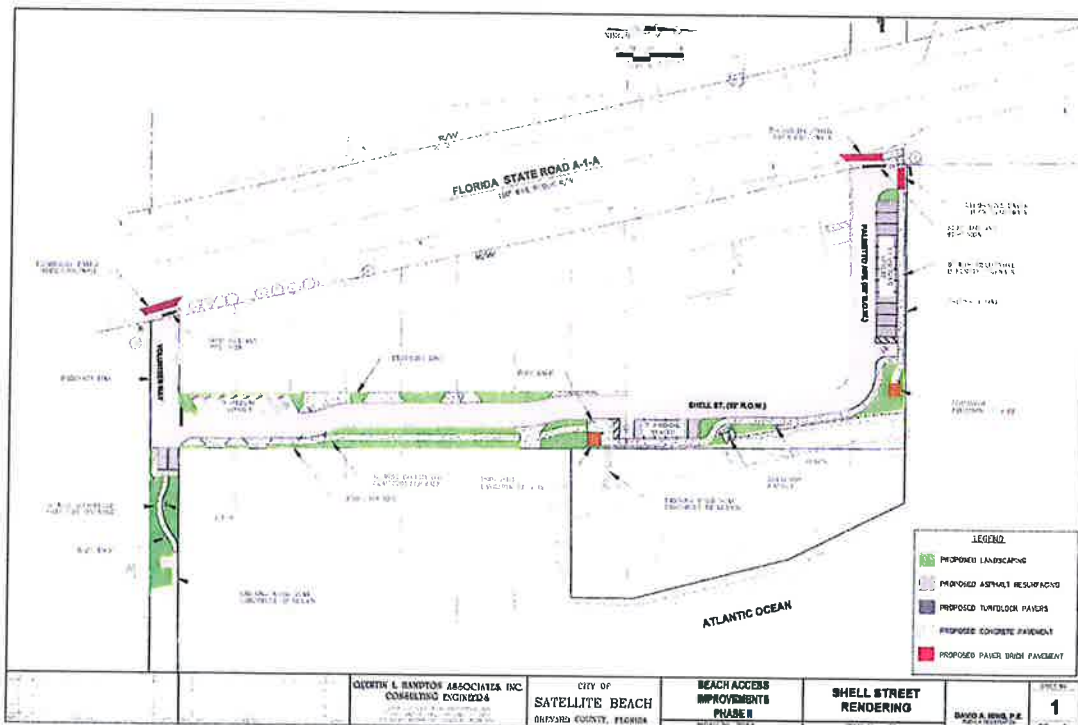
- **Crotty Park**: Improved beach access with new roadway, freshwater shower, sidewalks, landscaping, signage, picnic tables, trash receptacle, bike racks and redesign of roadway to traffic from entering into residential area. (page 22)
- **Shell Street**: Improve beach access with freshwater shower, sidewalks, landscaping, signage, picnic tables and pavilions, trash receptacle, bike racks, improve roadway design for better-safer traffic flow, install stormwater exfiltration to reduce flooding and improve water quality, install sewer line to remove homes from septic tanks. (page 22)

Crotty Park is in the conceptual engineering design phase, while the Shell Street project has recently selected a contractor and is scheduled for completion the summer of 2015. Some features on these projects may be added or removed during the final stages due to funding and/or permitting. The Shell Street beach access and roadway project may include funds from the City and the Stormwater Utility.

Michael P. Crotty Park



Shell Street Improvements



[2] SR A1A Redevelopment Traffic Safety Conceptual Engineering Plan:

Florida Department of Transportation (FDOT) announced their intent to let for bid a FY 2015/2016 resurfacing project from SR404 (Pineda) to SR192 this scope will include the full length of the Satellite Beach SR A1A corridor. Through a series of 13 public meetings a conceptual plan was created to request additional improvements from FDOT during their project. Amenities requested to be included are sidewalks, special emphasis crosswalks, SCAT shelters, replacement of strand pole signalization to mast arms, and pedestrian refuges. Staff continues to work with FDOT during the design and engineering phase to incorporate many of these complete street principles into the project.

Additionally, funding has been approved by the CRA to enhance the intersections of the neighborhood entrance streets to the A1A Corridor with landscaping. The first three streets have been identified and plant choices selected. This project is currently underway. (page 19)

[3] Pelican Beach Park – Playground Equipment:

In March 2014 the CRA replaced deteriorated playground equipment that was originally purchased through the CRA with similar style equipment made from recycled plastics and stainless steel hardware.

[4] Amended Redevelopment Plan:

The CRA revised its Redevelopment Plan on September 17, 2014 by Ordinance 1097. The new plan focuses on completing remaining redevelopment projects (page 21, 22) by FY 2019/2020. After the completion of the identified projects the CRA activities will be scaled back to maintenance of CRA assets and facilities, long term debt service obligations and operational expenses. The remaining funds will be sent back to the taxing authorities.

Financial Summary

[1] (Unaudited) Financial Statements

FY 2013/2014 CRA Financial Statement		
City of Satellite Beach Community Redevelopment Agency		
<u>Balance Sheet</u>		
Assets	Cash and Equivalents	\$855,560
	Investments	\$108,529
	Prepaid Expenses	<u>\$1,290</u>
	Total Assests	<u><u>\$965,379</u></u>
Liabilities	Accounts Payable	<u>\$7,546</u>
	Total Liabilities	\$7,546
Reserves/Balances	Fund Balance - Reserves	\$894,580
	Change in Fund Balance	<u>\$63,254</u>
	Total Reserves	\$957,834
	Total Liabilities & Reserves	<u><u>\$965,380</u></u>

Income Statement

	<u>Original Budget</u>	<u>Final Budget</u>	<u>Actual</u>
Revenues			
Taxes (County Portion)	\$378,068	\$377,109	\$377,109
Interest	\$11,849	\$4,829	\$4,683
Interest - <G>/L on Investment	\$166		-\$616
Grant-DEO TA A1A Eng Concept	\$0	\$25,000	\$25,000
Fund Balance Transfer In	\$654,146	\$650,464	\$650,464
Transfer From General Fund (TIF)	<u>\$35,338</u>	<u>\$35,338</u>	<u>\$35,338</u>
Total Revenues	<u>\$1,079,567</u>	<u>\$1,092,740</u>	<u>\$1,091,978</u>
Expenditures			
<i>Operating Expenses:</i>			
Salary/Wages & Benefits	\$0	\$0	\$0
Overtime	\$0	\$0	\$0
FICA	\$0	\$0	\$0
Legal Services	\$70,000	\$19,908	\$10,849
Engineering Services	\$0	\$28,828	\$28,828
Consultant Fees	\$0	\$2,245	\$2,245
Planning Services	\$0	\$0	\$0
Travel - Business Trips	\$7,000	\$5,319	\$5,319
Façade Grant Program	\$0	\$13,830	\$13,830
Business Development & Promotions	\$0	\$0	\$0
Banking Fees	\$10,761	\$4,042	\$2,809
Office Supplies	\$0	\$0	\$0
Operating Supplies	\$18,154	\$17,236	\$7,236
Tuition, Membership, & Publications	\$0	<u>\$2,280</u>	<u>\$2,280</u>
<i>Total:</i>	\$105,915	\$93,688	\$73,396
<i>Non- Operating Expenses:</i>			
Interfund Memo of Understanding	\$85,030	\$108,174	\$108,174
ILA with Brevard Co. for TIF Refund	\$117,316	\$117,316	\$117,316
Transfer to General Fund - TIF Refund	<u>\$199,755</u>	<u>\$199,755</u>	<u>\$199,755</u>
<i>Total:</i>	\$402,101	\$425,245	\$425,245
<i>Debt Service:</i>			
CRA Line of Credit - Principal	\$276,100	\$276,100	\$276,100
CRA Line of Credit - Interest	<u>\$218,601</u>	<u>\$201,225</u>	<u>\$191,225</u>
<i>Total:</i>	\$494,701	\$477,325	\$467,325
<i>Capital Outlay:</i>			
Property Disposition Costs	\$0	\$0	\$0
A1A Engineering Concept Grant	\$10,000	\$26,668	\$26,668
PBP Play Ground	\$0	\$22,339	\$22,339
Beach Access Improvement	\$66,850	\$10,361	\$10,361
Master A1A Streetscape	\$0	<u>\$3,390</u>	<u>\$3,390</u>
<i>Total:</i>	\$76,850	\$62,758	\$62,758
<i>Additions to Reserves:</i>			
Additions to Reserves	\$0	\$33,724	\$63,254
Total Expenditures	<u>\$1,079,567</u>	<u>\$1,092,740</u>	<u>\$1,091,978</u>
Net Effect for Fund Type Special Revenue			\$0

Note: Unaudited Financial Statements