

Replacement / Revision

Meeting Date
<b>December 9, 2014</b>



AGENDA	
Section	New Business
Item No.	VE 1

**AGENDA REPORT**  
*BREVARD COUNTY BOARD OF COUNTY COMMISSIONERS*

SUBJECT:	Brevard County 2015 Legislative Program
DEPT/OFFICE:	County Manager's Office

Requested Action:

It is requested that the Board of County Commissioners approve the 2015 Legislative Program and identify priorities for the December 18, 2014 Legislative Delegation meeting.

Summary Explanation & Background:

The Board of County Commissioners is asked to review the legislative items that staff and related Space Coast Agencies are highlighting for the State Legislature's 2015 session. The items the Board support make up the core of those issues that our legislative team will be asked to pursue.

The Departments and related agencies that have submitted item include County Attorney's Office, Emergency Management, Housing and Human Services, Natural Resources, Parks and Recreation, Public Works, Planning and Development; Utility Services; Space Florida and CareerSource, Inc. and Construction Industry / Real Estate Representatives. Their detailed requests are attached.

The Board is requested to approve the 2015 Legislative Program and to identify their top priorities for the upcoming session. Staff is recommending that the Board consider the following priority areas:

- I. Unfunded Mandates
- II. Establish process for state, county, and municipal elected officials to evaluate appropriate funding and delivery of intergovernmental service responsibilities between counties and the state.
- III. Tourist Development Tax
- IV. Emergency Operations Center
- V. County Infrastructure
- VI. County Department Public Statements / Requests
  - Housing and Human Services
    - a. Affordable Housing Trust Fund
    - b. Criminal Justice
    - c. Elder Services
    - d. Support for Homeless
    - e. Juvenile Justice
  - Central Services
    - a. Reuse of 108 Acres Brevard Correctional Institution
  - Natural Resources Management Department
    - a. Stormwater and the Indian River Lagoon
    - b. Beach Erosion Control Funding
    - c. Petroleum Clean-up and Pollutant Storage Compliance Verification Program
    - d. Waterways
  - Public Works
    - a. Legislative guidance to require all Local Agency Participation (LAP) projects to be constructed by FDOT
    - b. Address Mitigation for public roadways
  - Brevard County Space and Technology Agenda
    - a. Space Florida's Budget for Space Development



Tammy Etheridge, Clerk to the Board, 400 South Street • P.O. Box 999, Titusville, Florida 32781-0999

Telephone: (321) 637-2001  
Fax: (321) 264-6972

December 10, 2014

MEMORANDUM

TO: Stockton Whitten, County Manager

RE: Item V.E.1., Brevard County 2015 Legislative Program

The Board of County Commissioners, in regular session on December 9, 2014, approved the 2015 Legislative Program of identified priorities for the December 18, 2014, Legislative Delegation meeting; and approved the addition of representation of Brevard County on the Central Florida Expressway Authority board.

Your continued cooperation is always appreciated.

Sincerely,

BOARD OF COUNTY COMMISSIONERS  
SCOTT ELLIS, CLERK

Tammy Etheridge, Deputy Clerk

/ds

December 9, 2014

New Business

Subject: Brevard County 2015 Legislative Program

Page 2

**Summary Con't.**

- Space Coast Transportation Planning Organization
  - a. Brevard County Road Project Priorities (St. Johns Heritage Parkway System; Ellis Road Improvements; A1A Corridor)
  - b. Completion of Rail Trail and KSC Loop Trail
  - c. Passenger Rail
  - d. Port Canaveral's Passenger and Freight Capacity
  - e. Investment in Space Transportation Infrastructure
- Tourism Development
  - a. Internet Retailer Tax Exemption
  - b. Legal uses of Tourist Development Tax
  - c. Entertainment Incentive
- Planning and Development
  - a. Amend F.S. to modify current standards for building code inspectors and plans examiners
  - b. Attached memorandum Exhibit A
- Utility Services
  - a. Water Projects Grant Program
  - b. Potable Water Projects
  - c. Comprehensive wastewater treatment and infrastructure projects
- Emergency Management
  - a. Emergency Operations Center for Brevard County (See Exhibit B)
  - b. Consolidated Co-Located Dispatch

The Florida Association of Counties (FAC) will hold their 2015 Legislative Conference from November 19<sup>th</sup> through the 21<sup>st</sup>. A draft of the legislative issues they anticipate as priorities in each policy is also attached.

- Tax Reform
- Economic Development
- Amendment 1 – The Florida Water and Land Conservation Amendment
- Medicaid County Cost Cap
- Juvenile Detention Cost Share

Clerk to the Board Instructions:

Exhibits Attached: Proposed 2015 Legislative Program Summary; FAC 2015 Legislative Program, Exhibit A; Exhibit B

<b>Contract /Agreement (If attached):</b> Reviewed by County Attorney	Yes	<input type="checkbox"/>	No	<input type="checkbox"/>	PR <input type="checkbox"/>
---	-----	--------------------------	----	--------------------------	-----------------------------

County Manager	Assistant County Manager, Mel Scott	Department Director / Extension
----------------	-------------------------------------	---------------------------------

Stockton Whitten	Assistant County Manager, Venetta Valdengo	
------------------	--	--

## **Reuse of 108 Acre Brevard Correctional Institution**

Support the hazardous waste cleanup and demolition work required to reuse 108-acre site adjacent to the Brevard County Detention Center, formerly the State of Florida Department of Corrections Brevard Correctional Institution.

1. Removal/disposal of hazardous materials/substances above and below grade;
2. Work Camp Upgrades for Detention Center Expansion
  - Construction and improvements to existing work camp facilities;
  - Improvements required to establish ten-acre agricultural facility for production/processing of produce;
3. Prison Compound selective demolition and removal of aged prison facilities and associated above grade and below grade infrastructure improvements and hazardous materials.
  - Remove aged domestic water infrastructure and replace
  - Remove abandoned underground fuel supply lines;
  - Site Improvements (electrical and domestic water infrastructure)
  - Sewer infrastructure removal and replacement;
  - Campus master-planning.

# Brevard County Board of County Commissioners 2015 Legislative Program Summary

## Brevard County Policy Statements

### Unfunded Mandates

**SUPPORT** establishing a process for state, county, and municipal elected officials to collaboratively evaluate appropriate funding and delivery of intergovernmental service responsibilities between counties and the state.

**OPPOSE** any state actions that limit the ability of local elected officials to make fiscal and public policy decisions for the citizens they represent.

### **Brevard County Initiatives**

#### Brevard County Tourist Development Tax

**SUPPORT** legislation that would amend a Tourist Development Tax law to eliminate automatic expiration of the entire Tourist Development Tax upon pay off of stadium bonds and termination of professional sports team stadium lease. *(County Attorney's Office)*

#### Brevard County Emergency Operations Center (EOC)

**SUPPORT** funding for the new Brevard County EOC that supports emergency management activities that benefit the United States and the State of Florida through activation for every space launch at Cape Canaveral and Kennedy Space Center as well as support of NASA, military, and Port facilities. *(Emergency Management)*

#### Brevard County Infrastructure

**SUPPORT** funding for the Transportation Planning Organization's highest priority projects – the St. John's Heritage Parkway, Ellis Road Improvements and A1A corridor improvements. *(Public Works)*

## Brevard County Department Issues

### **Housing and Human Services Department:**

#### Affordable Housing Trust Fund

**SUPPORT** retaining the full amount of dedicated documentary stamp tax revenues towards state and local affordable housing programs.

#### Criminal Justice

**SUPPORT** expanding the fee waiver to include county jails for the cost to obtain identification cards on certain inmates, just as it is now provided to the Florida Department of Corrections' prison system through Florida Law, Chapter 2014-193.

**SUPPORT** increasing the number of State-funded residential treatment beds for those in the criminal justice system who are ready to address their substance addiction.

#### Elder Services

**SUPPORT** a requirement that an eligible professional who transitions or refers their patients to another setting or provider of care utilize a Transition of Care Document to provide a summary case record for each transition.

**2015 Brevard County Legislative Program Summary**  
**Page Two**

**Housing and Human Services (continued):**

Funding for Programs Supporting the Homeless

**SUPPORT** continued funding for programs that provide support to the homeless.

**Natural Resources Management Department**

Stormwater and the Indian River Lagoon

**SUPPORT** measures that provide flexibility to county governments in crafting solutions to water quality problems at the local level.

**SUPPORT** the re-alignment of the Indian River Lagoon National Estuary Program.

**SUPPORT** initiatives that will **reduce** pollution sources, **remove** legacy loading, **restore** critical ecosystem functions in the Indian River Lagoon and fund sound **research** on the Indian River Lagoon.

**SUPPORT** increased revenue allocation to DEP for Stormwater projects to meet the federal total Maximum Daily Load requirements.

**SUPPORT** increased revenue allocation to FDACS for Agricultural Best Management Practices targeting water quality improvements and increased cost share to small farms.

**SUPPORT** revenue allocation for voluntary upgrades of existing onsite sewage treatment systems to Performance based Advanced Wastewater systems or connection to centralized sewer.

**SUPPORT** increased revenue allocation for environmental muck removal in the Indian River Lagoon.

**SUPPORT** increased revenue allocation for action-based research to restore the Indian River Lagoon.

**OPPOSE** preemption of county authority to regulate the use and application of fertilizer.

**OPPOSE** preemption of county authority to regulate water quality to achieve Total Maximum Daily Loads.

Beach Erosion Control Funding

**SUPPORT** increasing the statutory level of dedicated state funding for beach renourishment from \$30 million annually to an amount sufficient to sustain Florida's beaches. Brevard County projects have submitted a Long Range request for \$2,074,653 of state funds in fiscal year 2015-2016.

**SUPPORT** legislation that improves the project ranking criteria and process used to allocate state funding for beach renourishment projects.

**SUPPORT** legislation that streamlines beach nourishment permitting.

**SUPPORT** the position of the Florida Shore and Beach Preservation Association's Beach Watch program led by Debbie Flack. Brevard County is a Beach Watch member and participates in developing the Beach Watch position and priorities.

## 2015 Brevard County Legislative Program Summary Page Three

### Natural Resources (continued):

#### Petroleum Clean-up and Pollutant Storage Compliance Verification Program

**SUPPORT** legislation that upholds state and local funding sources and statutory provisions to assist Local Governments in the following:

- Petroleum Restoration Program, Chapter 62-780, F.A.C.
- Pollutant Storage Tanks Compliance Verification Program, Chapter 62-761 and 762, F.A.C.

**OPPOSE** further cuts to the Storage Tank Compliance Verification Program special category of the Inland Protection Trust Fund (IPTF).

**OPPOSE** changing the routine compliance assurance inspections frequency from every two (2) years to every three (3) years.

**SUPPORT** Local Government Clean-up Contracting which provide services in a more efficient and cost effective manner as stated in the Office of Inspector General's internal audit.

**SUPPORT** restoring funding to its previous level for locally contracted FDEP Petroleum Restoration Program (PRP) (\$12 million) and the Storage Tank Compliance Verification Program as defined in Section 376.3073 F.S.

#### Waterways

**SUPPORT** legislation which preserves public access to and along beaches and state water bodies and which preserves county regulatory power.

**SUPPORT** the development of legislation intended to support public waterway access and navigational rights and that advances the mooring field permitting process while affording locally adopted regulations to protect water quality and the health and welfare of local citizens when adequate anchorage is available.

**SUPPORT** the development of legislation and initiatives that will simplify the requirements for maintenance dredging and muck removal throughout our shared waterway systems while recognizing the importance of clearing and maintaining these systems for improved access and the reduction of accumulated silts and pollutant loads.

**SUPPORT** funding to the Florida Boating Improvement Program by fully restoring program appropriations including revenue under section 206.606(1)(d), F.S., providing for the availability of a portion of the moneys attributable to the sale of motor and diesel fuel at marinas.

**SUPPORT** legislation that upholds state and local funding sources and statutory provisions to assist local governments in the following:

- Maintains state funding for derelict vessel removal.
- Maintains land acquisition funding for recreational and commercial waterfronts from Florida Communities Trust, Florida Forever Program, and the Stan Mayfield Working Waterfronts Grant.
- Provides for construction or maintenance of boating improvement projects, and vessel management initiatives.

**2015 Brevard County Legislative Program Summary  
Page Four**

**Natural Resources (continued)**

- Devise a method of calculating fuel taxes that more accurately reflects the fuel taxes paid by all vessels, including those trailer able vessels fueled at land side stations. Local boater characterization studies data should be incorporated into this methodology where available.

**Public Works**

**SUPPORT** legislative guidance to require all Local Agency Participation (LAP) projects to be constructed by FDOT; or provide legislative guidance for FDOT to return to their previous application of the Federal Highway Administration (FHWA) rule; or provide a funding source to local agencies to meet the new FDOT interpretation and application of the Rule.

**Background**

The Americans with Disabilities Act requires all public facilities to include ADA compliant design and construction specifications. For Local Agency Participation (LAP) projects funded with Federal funding provided to the Florida Department of Transportation (FDOT), City and County agencies are required to meet all ADA standards for new construction. Additionally, the local agencies were required to have an established program to work towards retrofitting all existing public facilities to become ADA complaint as local funds allow. There are no Federal or State funds available to provide for local agency retrofitting of existing facilities.

During the past year, FDOT has changed their interpretation and application of this rule to require the local agencies (cities and counties) that construct LAP projects to demonstrate funding to retrofit all existing public facilities, or not participate in the LAP program. This is in effect, an unfunded mandate.

**SUPPORT** legislation to address mitigation for public roadways or provide guidance to FDOT to open their existing FDOT Statewide mitigation bank to assist local agencies as a source of funding for local roadway projects in adopted TPO Long Range Transportation Plans.

**Background**

Currently it is not unusual for mitigation to cost more than 20% of construction costs for public roadway projects. Often, this includes local public funds being transferred to another public agency (SJRWMD or DEP). Public funding is simply being moved from one public agency to another public agency.

Local agencies already utilize avoidance and minimization of impacts during roadway design and construction but still must use public funding for mitigation costs on public roadways.

FDOT currently maintains a State wide mitigation bank for its own uses.

**Brevard County Space and Technology Agenda**

**Space Florida Budget**

**SUPPORT** Space Florida's Budget for Space Development

- \$10 million - business development and operations
- \$4 million recurring

**2015 Brevard County Legislative Program Summary  
Page Five**

**Brevard County Space and Technology Agenda (continued):**

- \$6 million non-recurring
- \$1.5 million- space tourism marketing
- \$1 million - Israel research and development cooperative
- \$7 million - aerospace financing fund

**Space Coast Transportation Planning Organization**

**SUPPORT** Brevard County Road Project Priorities

- **St. Johns Heritage Parkway System** - Continue local/state partnerships to identify funding for all segments of the parkway from the south I-95 Interchange to Ellis Road.
- **Ellis Road Improvements** – Secure funding for construction of the Ellis Road interchange and for widening Ellis Road to four lanes. Pursue Strategic Intermodal System designation.
- **A1A Corridor** – Implement improvements to the A1A corridor from Pineda Causeway to Port Canaveral as recommended in the FDOT feasibility study.

**SUPPORT** Completion of the Rail Trail and KSC Loop Trail to Close the Gaps – Allocate state transportation trust funds to be used for development of regional multi-purpose trails including the East Central Florida Regional Rail Trail and the Kennedy Space Center Loop Trail. The 55-mile Space Coast Loop will provide the eastern link to the Coast-to-Coast Connector and is the planned south end of the five-county St. Johns River to Sea Loop.

**SUPPORT** Passenger Rail in Brevard – Continue state investment in quiet zones as passenger rail is expanded. Develop passenger rail stations in Titusville, Cocoa and Melbourne to allow connecting service from Orlando, Jacksonville, and Miami as passenger rail service is expanded throughout the state.

**SUPPORT** Expansion of Port Canaveral's Passenger and Freight Capacity – Invest in strategic port projects to expand passenger and cargo facility development and support intermodal connections, including rail, to the port.

**SUPPORT** Investment in Space Transportation Infrastructure – Continue to prioritize and fund spaceport projects in the Strategic Intermodal System five year plan. Incorporate spaceports into all long-range transportation plans and programs with specific policies and procedures for spaceport development.

**TRANSPORTATION FUNDING**

**SUPPORT** funding for regional trails that expand access to public lands – Allocate up to 10% of Amendment 1 documentary stamp funds to build a statewide regional trail system that will provide public access to Florida's natural resources and to expand eco-tourism.

**Space Coast Transportation Planning Organization (continued):**

**SUPPORT** Funding for the Transportation Regional Incentive Program (TRIP) – TRIP funds come from documentary stamps to provide matching funds (up to 50%) for improvements to regionally significant transportation facilities. Allocated funds have been reduced as a result of the economic decline and may be further impacted by the Florida Water and Land Conservation Amendment.

**SUPPORT** Consideration for Local Priorities for Flexible Transportation Funding - New federal guidelines allow increased state discretion for use of transportation funds. The state's transportation funding policies need to address local comprehensive transportation system needs and successful programs such as Complete Streets and Safe Routes to School.

**SUPPORT** Protection of the State Transportation Trust Fund and Transportation Disadvantaged Trust Fund - In the long term, diverting money from trust funds for non-transportation uses degrades the state's transportation system and impairs the state's economic competitiveness, public safety and quality of life.

**Tourism Development**

**SUPPORT** Internet Retailer Tax Exemption --The sale of discounted hotel rooms over the Internet by Internet intermediaries, such as Priceline.com and Expedia.com, has skyrocketed in the last decade. As a result, both state and local governments are losing significant amounts of revenue due to the way internet intermediaries choose to calculate the taxable amount of their hotel room transactions. State of Florida sales tax laws should be clarified to state that taxes shall be collected based upon "the total consideration charged and collected from the guest for the hotel room." The Florida Association of Destination Organizations (FADMO) estimates that the state is losing at least \$37 million annually in unpaid sales and Tourist Development Taxes. The TDC along with FADMO supports collecting tax on the full amount charged to the guest staying in the room.

**SUPPORT** Legal Uses of Tourist Development Tax -- The Tourist Development Council is against the expansion of the legal uses of Tourist Development Taxes for purposes other than tourism marketing. The TDC supports preserving the current uses of Tourist Development Taxes and opposes any expansion of those uses outside of tourism marketing activities.

**SUPPORT** Entertainment Incentive -- Support request for the state to replenish the state funding to the Film and Entertainment Incentive Program by providing \$50m-\$75m per year of additional funding to continue to pre-certify projects through 2020. If funds are allocated to this program, this important industry that for decades has consistently provided direct economic impact to the Florida economy can be retained.

**2015 Brevard County Legislative Program Summary**  
**Page Seven**

**Planning & Development:**

**SUPPORT** for changing Ch. 468.609(2)©(1), F. S. to modify current standards for building code inspectors and plans examiners in order to qualify for taking examinations for certification. Florida Statutes currently require that an applicant “demonstrate 5 years combined experience in the field of construction or a related field, building code inspection or plans review corresponding to the certification category sought...”

Instead, the Statutes should be amended to require that an applicant:

- (a) Demonstrate 5 years of any combination of building, mechanical, electrical, or plumbing construction experience as a building inspector, plans examiner, engineer, architect, contractor, or as a superintendent, foreman, or competent mechanic in charge of construction, or as a fire safety inspector licensed pursuant to chapter 633; and
- (b) (b) Satisfactorily complete a building code inspector or plans examiner classroom training course of not less than 40 hours corresponding to each certification category sought. The board shall establish by rule criteria for development of the classroom training courses.”

The attached memorandum to the Home Builders Association and Space Coast Realtors details the basis for the change to the Florida Statutes.

**Utility Services:**

**SUPPORT** Water Projects Grant Program administered by Florida Department of Environmental Protection

**SUPPORT** Grant application for matching funds through House of Representative Water Projects Grants Funding (Agriculture & Natural Resources Appropriations Subcommittee.)

**SUPPORT** Potable water projects that improve the quality of water and modernization of the treatment process, and lessen potential for waterline breaks and outages to customers.

**SUPPORT** comprehensive wastewater treatment and infrastructure projects that treat wastewater to a higher standard for reclaimed water use, and reduce the infiltration and inflow (I&I) of groundwater into the sewer systems. Decreases I&I within wastewater treatment systems reduces potential impacts to the Indian River Lagoon and other water bodies.

**Emergency Management:**

**SUPPORT** A new Emergency Operations Center for Brevard County

**Brevard’s Unique Space & Defense Significance**

Brevard County has unique significance to the state and nation due to the assets located within its borders. With NASA and U.S. Air Force rocket launching at Cape Canaveral, averaging more than one launch per month, and the pending development of a dedicated commercial launch site at Kennedy Space Center, Brevard County’s Emergency Operations Center (EOC) is the most frequently activated in the State. Military facilities include Cape Canaveral Air Force Station, the Naval Ordnance Test Unit for Trident

## **2015 Brevard County Legislative Program Summary**

### **PageEight**

#### **Emergency Management (continued):**

submarines at Port Canaveral, and Patrick Air Force Base, which houses both the 920<sup>th</sup> Rescue Squadron and the Air Force Technical Applications Center, a high-value national security asset. In addition, Brevard has a significant defense-industrial base, with contractors such as Harris Corporation, Northrop Grumman, Boeing Company, Lockheed Martin, Raytheon Company, Intersil Corporation, Rockwell Collins, DRS Technologies, United Launch Alliance and Space X. Port Canaveral, which is the fastest-growing port in Florida and the second-busiest cruise terminal in the world, is also home to SeaPort Canaveral, which is the major supplier of jet fuel for Orlando, Sanford and Jacksonville international airports.

#### Brevard's Other Hazards

With seven presidentially declared disasters in the last ten years, Brevard County is no stranger to hazards other than launch anomalies or possible terrorism targets. Other hazards include hurricanes, tropical storms, storm surge, inland flooding, tornados, wildfires, fog, drought, agricultural infestation, tsunamis, sea level rise, severe storms, freezing conditions, winter storms, subsidence and erosion, civil disorder, pandemics, mass casualty incidents, I-95 accidents, rail accidents, jet fuel tank farm accidents, aircraft accidents, hazardous materials incidents, radiological materials incidents, utility system failures, communication system failures, cyberattacks, and offshore environmental accidents. Brevard is also susceptible to a nuclear power plant incident, as parts of the county are within the 50-mile ingestion pathway for the St. Lucie Nuclear Power Plant.

#### Grant Funding

The Hazard Mitigation Grant Program is authorized by Section 404 of the Robert T. Stafford Disaster Relief and Emergency Assistance Act (PL 93-288 as amended) and is designed to assist states, local governments, private non-profit organizations and Indian Tribes in implementing long-term hazard mitigation measures following a major disaster declaration. The Florida Division of Emergency Management is the lead state administrative agency for this federal funding. For funding via this program, projects must be listed within the county's pre-approved Local Mitigation Strategy before the disaster occurs. Brevard's EOC is on this list. Emergency Management Preparedness & Assistance grants and Emergency Management Performance Grants are both received annually via the State of Florida but are used to fund emergency management operations.

#### Matching Funds

Brevard County could provide some measure of matching funds through in-kind value of County-owned lands on which to build a new facility. The State of Florida Division of Emergency Management does not have matching funds to allocate but would be supportive of this due to the inadequacy of our current facility.

#### Spatial Assessment

An analysis of the current facility and needs, conducted by Architects Design Group in 2012, determined that a 60,000 square-foot facility would provide for an EOC, collocated law enforcement/fire 911 communications dispatch center, traffic management center, 800 MHz public safety radio system, E911 administration, and logistical space to support daily and disaster emergency management operations. Since then, the National Weather Service has begun an initiative to co-locate their local offices with

## **2015 Brevard County Legislative Program Summary**

### **Page Nine**

#### **Emergency Management (continued):**

EOCs; including the Melbourne NWS office would require an additional 6000 square feet, for a total of 66,000.

#### Consolidated Co-Located Dispatch

As part of the new Emergency Operations Center, a consolidated/co-located dispatch communications center would be located within the facility. This provides for 11 (expandable to 22) call-taking/radio dispatch positions and a shift supervisor on the Fire-Rescue/EMS side, and for 16 (expandable to 84) call-taking/radio dispatch positions and a shift supervisor on the law enforcement side. This will accommodate the future consolidation of Public Safety Answering Points so that all 911 call-taking and public safety dispatching (for the county and all municipalities) can be done at the same location. This enhances information sharing and decreases the time required for response from assisting agencies. Currently, BCFR dispatches for 5 municipal fire departments, and BCSO dispatches for 3 municipal police departments. The consolidated communications center will also have access to the traffic cameras available through the Traffic Management system, to assist in coordinating response.



## BOARD OF COUNTY COMMISSIONERS

Planning & Development  
 Building Code Division  
 2725 Judge Fran Jamieson Way  
 Building A, Room 115  
 Viera, Florida 32940

TO: Construction Industry/Real Estate Representatives  
 FROM: Michael McCaughin, Chief Building Official  
 SUBJ: Inspectors and Plans Examiners  
 DATE: September 9, 2014

I would like to bring to your attention an issue that is and will increasingly impact the building industry in Florida. There is an extreme shortage of licensed building inspectors and plans examiners across the state which will eventually result in longer permit turnaround time and likely additional permitting expense, unless something is changed.

I regularly speak with my peers from around the state and find the most common complaint from building departments is the inability to fill vacant inspector and plans examiner positions. The issue stems in part from the restrictive experience requirements for inspector and plans examiner licensure by Florida Statute Chapter 468, and Florida Administrative Code 61G19. The issue has been further compounded by the overly strict and narrow application of the statute and rules by the Building Code Administrators and Inspectors Board (State licensing board).

Brevard County and most jurisdictions in the state rely upon multi trade licensed plans examiners and inspectors to perform Florida Building Code compliance review and inspection. This provides for efficient delivery of services, especially on the inspection side, by allowing one inspector in one inspection trip to perform inspections of all trade work. The licensure qualification rules now in place make obtaining multi trade licensure nearly impossible. This will ultimately result in a change in our business model to a single trade inspector/plans examiner program requiring several employees to accomplish what is currently performed by a single person. This means a bigger more costly local government.

Our current situation is not a sustainable business model and as we move forward in the economic recovery, local government will be unable to keep pace with the increased demand for inspection and plan review services. The resolution of this issue lies with the Legislature and the creation of flexibility in the statutory experience requirements to provide realistic qualification standards for applicants to sit for licensure examination. Attached are proposed changes to F.S. Chapter 468.609(c) 1 that would create a reasonable standard to qualify for licensure examination and provide the relief needed.

Brevard County is committed to a partnership with the building industry to achieve quality code compliant construction in a timely, efficient and cost effective manner and is seeking your support in our efforts to address this issue with the State Legislature.

468.609 Administration of this part; standards for certification; additional categories of certification.—

(1) Except as provided in this part, any person who desires to be certified shall apply to the board, in writing upon forms approved and furnished by the board, to take the certification examination.

(2) A person may take the examination for certification as a building code inspector or plans examiner pursuant to this part if the person:

(a) Is at least 18 years of age.

(b) Is of good moral character.

(c) Meets eligibility requirements according to one of the following criteria:

1. ~~Demonstrates 5 years' combined experience in the field of construction or a related field, building code inspection, or plans review corresponding to the certification category sought;~~

(a) Demonstrates 5 years' of any combination of building, mechanical, electrical, or plumbing construction experience as a building inspector, plans examiner, engineer, architect, contractor, or as a superintendent, foreman, or competent mechanic in charge of construction, or as a fire safety inspector licensed pursuant to chapter 633; and

(b) Satisfactorily completes a building code inspector or plans examiner classroom training course of not less than 40 hours corresponding to each certification category sought. The board shall establish by rule criteria for development of the classroom training courses.

2. Demonstrates a combination of postsecondary education in the field of construction or a related field and experience which totals 4 years, with at least 1 year of such total being experience in construction, building code inspection, or plans review;

3. Demonstrates a combination of technical education in the field of construction or a related field and experience which totals 4 years, with at least 1 year of such total being experience in construction, building code inspection, or plans review;

4. Currently holds a standard certificate as issued by the board, or a fire safety inspector license issued pursuant to chapter 633, has a minimum of 5 years' verifiable full-time experience in inspection or plan review, and satisfactorily completes a building code inspector or plans examiner training program of not less than 200 hours in the certification category sought. The board shall establish by rule criteria for the development and implementation of the training programs; or

5. Demonstrates a combination of the completion of an approved training program in the field of building code inspection or plan review and a minimum of 2 years' experience in the field of building code inspection, plan review, fire code inspections and fire plans review of new buildings as a firesafety inspector certified under s. 633.216, or construction. The approved training portion of this requirement shall include proof of satisfactory completion of a training program of not less than 300 hours which is approved by the board in the chosen category of building code inspection or plan review in the



# Emergency Operations & Communication Center

**Brevard County's needs**



## What is an EOC?

- An emergency operations center is a central command and control facility responsible for carrying out the principles of emergency preparedness and emergency management functions at a strategic level in an emergency situation, and ensuring the continuity of operation of a political subdivision.
- The functions of an EOC are to collect, gather and analyze data; make decisions that protect life and property; maintain continuity of the organization, within the scope of applicable laws; and disseminate those decisions to all concerned agencies and individuals.



## Another EOC Definition

A place "where uncomfortable officials meet in unfamiliar surroundings to play unaccustomed roles, making unpopular decisions based on inadequate information, and in much too little time."

(Art Botterell — 1989).

# What happens in an EOC?



EOCs coordinate with on-scene incident managers and other entities to:

- Acquire, assign, and track resources.
- Manage information.
- Set response priorities.
- Provide legal and financial support.
- Liaison with other jurisdictions and other levels of government.



## Essential functions of an EOC

- Damage analysis
- Resource acquisition, assignment, and tracking
- Spatial and data analysis, including mapping
- Information coordination (including public information/media affairs)
- Contracting and contract management
- Cost accounting
- Public safety (evacuation, sheltering, food distribution)
- Support services (food, water, utilities, etc.)

# Brevard's Demographics and Geography



- Population: 552,176 (10<sup>th</sup> most populous in Florida)
- 16 municipalities
- 23 miles wide and 72 miles long
- 1,557 square miles (7<sup>th</sup> largest in the state)
- 3 regions: St. Johns River valley, Atlantic coastal ridge (highest point is 83 ft), and barrier islands
- 3 rivers: St. Johns, Indian River Lagoon & Banana
- 7 primary causeways provide access to the mainland
- 2 major north-south roadways: I-95 and US1
- 60% of Brevard County lies in a flood-prone area
- 30% of Brevard County comprises wetlands



# Brevard's Natural Hazards

- Hurricane
- Tropical storm
- Storm surge
- Flooding
- Tornado
- Wildfire
- Fog
- Drought
- Agricultural infestation
- Tsunami
- Sea Level Rise
- Severe storms
- Freezing conditions
- Winter storms
- Exotic pests and diseases
- Subsidence and erosion



# Brevard's Societal Hazards

- Terrorism
- Civil Disorder
- Pandemic
- Mass Casualty Incident
- Interstate Accident
- Rail Accident
- Jet Fuel Tank Farm Accident
- Aircraft Accident



## **Brevard's Technological Hazards**

- Rocket Launch Anomaly
- Hazardous Materials Incident
- Radiological Materials Incident
- Nuclear Power Plant Incident (50-mile ingestion pathway for St. Lucie Nuclear Power Plant)
- Utility System Failure
- Communication System Failure
- Cyber Attack
- Offshore Environmental Accident



## Brevard's Critical Infrastructure

- NASA's Kennedy Space Center
  - Major tourist attraction with over 1.5 million visitors annually
  - Directly employs over 13,000; thousands of others in the technological sector, mission operations support and service industry
  - While manned spaceflight is on a hiatus, KSC and NASA still support rockets launched from CCAFS and the growing field of private sector/commercial spaceflight
  - Contributes over \$1.6 billion annually to Florida's economy



## Brevard's Critical Infrastructure

- Port Canaveral
  - Fastest growing port in Florida
  - 2<sup>nd</sup> busiest cruise port in the world
    - Over 3,750,000 passengers in 2012
  - Almost \$69 million in revenue for 2012
  - 17,000 jobs generated by Port Canaveral cruise, cargo, marina, and real estate activity
  - Close to 4 million tons of cargo in 2012
  - Over 200 tenants including cruise ships
  - U.S. Navy Trident submarine basin



## Brevard's Critical Infrastructure

- Seaport Canaveral
  - Supplies Orlando International Airport with 40% of their jet fuel
  - Provides Sanford International Airport with 100% of their jet fuel
  - Supplies Jacksonville International Airport with a majority of their jet fuel
  - Provides all the fuel to the cruise ships



## **Brevard's Critical Infrastructure**

- **Patrick Air Force Base**
  - 13,000 military, dependents, civilian employees and contractors
  - Air Force Technical Applications Center (AFTAC) – high national security asset
  - 45<sup>th</sup> Space Wing
  - 920<sup>th</sup> Rescue Wing
  - Defense Equal Opportunity Management Institute (DEOMI)
- **Cape Canaveral Air Force Station**
  - Eastern Missile Range for the United States



## **Brevard's Critical Infrastructure**

- Major defense-industrial base
  - Harris Corporation – world headquarters
  - Northrop Grumman
  - Boeing Company
  - Lockheed Martin
  - Raytheon Company
  - Intersil Corporation
  - Rockwell Collins
  - DRS Technologies
  - United Launch Alliance
  - Space X



## **Brevard's Critical Infrastructure**

- Melbourne International Airport
  - Part of Foreign Trade Zone 136
  - International and domestic flights
  - Growing commercial aircraft and aerospace-manufacturing cluster
- Colleges: Florida Institute of Technology, University of Central Florida, Eastern Florida State
- 2<sup>nd</sup> largest manufactured home park in the U.S.



## Recent Declared Disasters

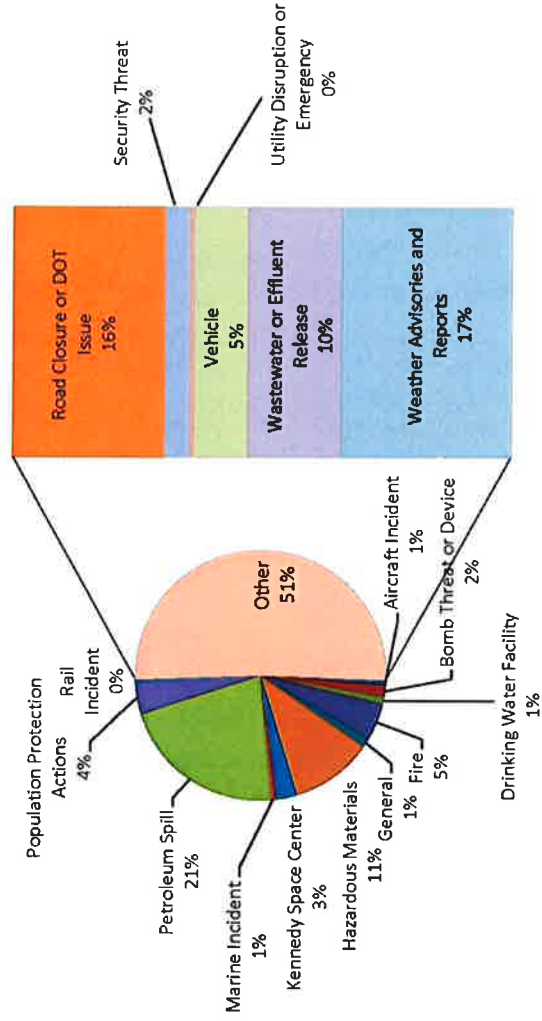
- Tropical Storm Fay - August 2008
- Mother's Day Fires - May 2008
- Hurricane Wilma - October 2005
- Tropical Storm Bonnie; Hurricanes Charley, Frances, and Jeanne - August/September 2004
- Orlando Fire Complex - April 2001
- Hurricane Floyd - September 1999
- Firestorm – June/July 1998



# 2012-13 Reportable Incidents

Incident Type	Count	County
Aircraft Incident	3	Brevard
Bomb Threat or Device	7	Brevard
Drinking Water Facility	4	Brevard
Fire	21	Brevard
General	5	Brevard
Hazardous Materials	47	Brevard
Kennedy Space Center	12	Brevard
Marine Incident	3	Brevard
Petroleum Spill	94	Brevard
Population Protection Actions	19	Brevard
Rail Incident	1	Brevard
Road Closure or DOT Issue	69	Brevard
Security Threat	11	Brevard
Utility Disruption or Emergency	2	Brevard
Vehicle	24	Brevard
Wastewater or Effluent Release	42	Brevard
Weather Advisories and Reports	77	Brevard

State Watch Office Incident Report





## EOC considerations (per FEMA)

- Accessibility: From major roadways? Can personnel respond quickly? Can people walk there, if necessary? Is it centrally located?
- Safety: Is the area/facility vulnerable to natural or manmade hazards?
- Size: Is there enough space for staffing, equipment, conferences, eating, and sleeping?
- Systems capability: Are HVAC, water, electricity & telephone systems fully functional? Are there backup systems such as generators, dual A/C units, potable water storage, and IT servers?
- Survivability: Can it remain operable for an extended period of time, despite the incident or other damage?



## Size considerations

- Per FEMA, allocation of approximately 105-110 gross square feet per 1000 population of the jurisdiction will generally provide sufficient area.
- **By this guideline, Brevard's population of 552,000 calls for a 57,960-square-foot EOC at minimum.**
- Our current EOC floor is 3400 square feet. This accommodates, at 1984 standards, 68 people, or at current standards, 23 people. In a 24-hour full-scale activation, we have **100+** in the room.



## EOC size affects stress levels

- Noise from phones, radios, multiple conversations and crowded conditions starts to undermine people's abilities to make decisions, and affects mental health.
- FEMA recommendation: break room space, adjacent to the EOC, so workers can take a stretch, get some food or take a mental rest. (No space available)
- FEMA recommendation: a no-eating rule in the EOC. "If eating is allowed it will likely be a 'pig pen' in just a matter of hours, resulting in smells, crumbs and other unpleasantness." (No space available)
- FEMA recommendation: rest area or lounge that staff can go to and take a quick 'cat nap' if things are slow. (No space available)



## Current facility

- 5,500 square feet built in 1964 plus 5,500 square feet added in 1999 = 11,000 square ft building.
- Maintenance and repair issues due to aging infrastructure & technology have cost more than \$800,000 in the past six years.
- Aged plumbing and electrical systems plus numerous cracks in walls and ceilings of the underground bunker have resulted in a patchwork quilt of repairs over the last 50 years.

# Current facility





# Current facility



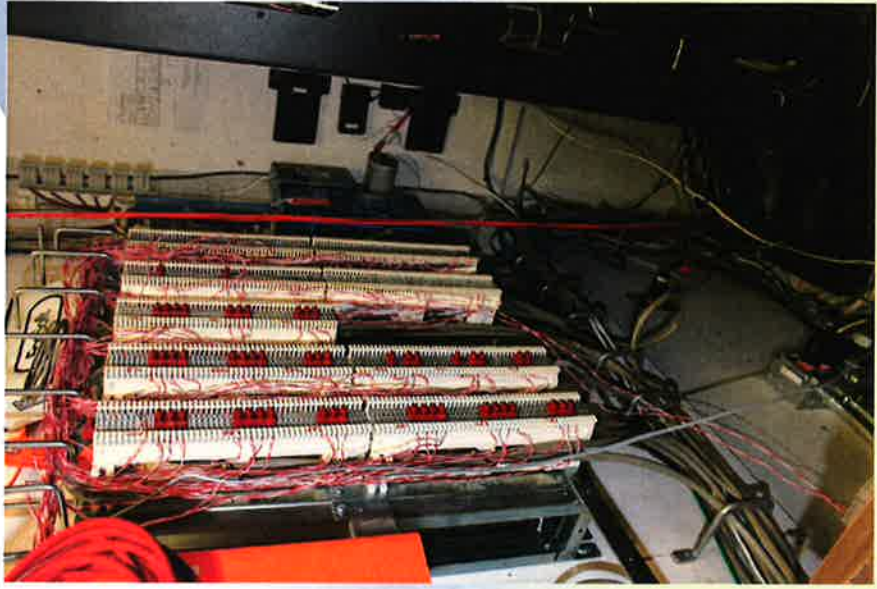


# Current facility





# Current facility

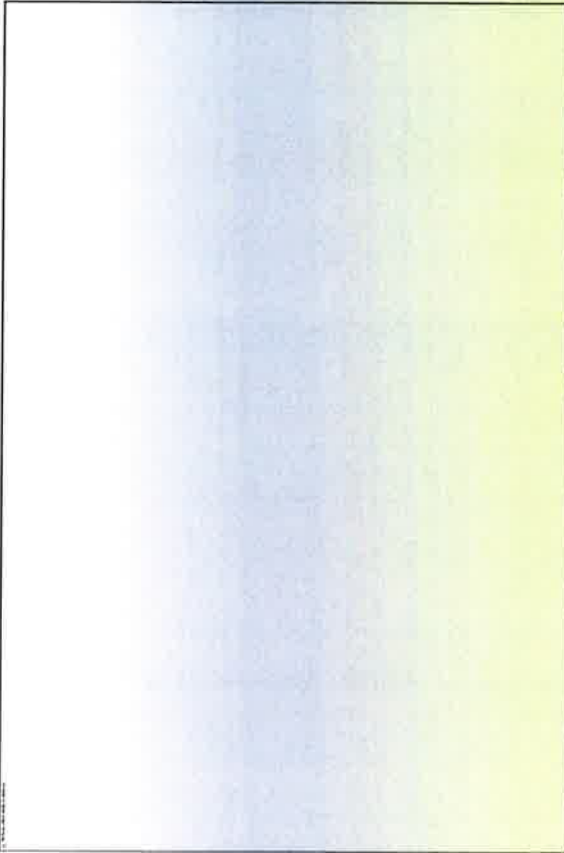


# Current facility





# Current facility





## Facility comparison

- 5<sup>th</sup> oldest EOC in the state of Florida
- 3 of the older EOCs belong to 'fiscally constrained' counties: Gadsden (pop. 46K), Glades (pop. 12K), and Hardee (pop. 28K). New EOC in Glades County is in progress.
- Oldest and smallest EOC in our 9-county region (Volusia, Seminole, Lake, Orange, Osceola, Indian River, Martin & St. Lucie)
- **Ours is the most frequently activated EOC in the state**



# Spatial Needs Assessment

- Architects Design Group: 55,000-square-foot space would meet needs of Emergency Management & Operations, 911 Administration, 800 MHz Administration, BCFR Communications, BCSC Communications, IT servers, and (emergency) Traffic Management.
- EOC floor should provide space for representatives from each municipality (which we do not have in Brevard, unlike other counties), and for representatives from state/federal agencies (KSC, CCAFS, PAFB, FHP, FDOT, FFW, etc.)
- Co-location of BCFR & BCSC communications centers = better information-sharing, plus space for current and future needs.
- Storage space for special needs cots, etc. is a must.



# History

- 1996: BoCC considered adjacent Huntington Lane property for a new EOC: “Existing EOC is undersized to meet current needs.”
- 2004 After-Action Report: **“The EOC was severely strained during full activation with over 100 people working within the EOC on a 24 hour basis at the various ESF stations... This resulted in long shifts, little rest, workers coming and going at risk to the elements and a liability to the County. The Health Department facilities next door were used by staff as a place of last resort to sleep if needed. Current needs far exceed the building capacity.”**
- 2005: Property Condition Assessment complete, with several areas of concern noted.
- 2012: Spatial Needs Assessment & Conceptual Design complete.



## Timing – 800 MHz upgrade

- Current upgrade/expansion of 800 MHz radio system to P25 compatible will be complete in 1 year.
- City communications centers will need to purchase new radio consoles (\$60K each).
- Cities considering co-location of their dispatchers with BCFR/BCSO – or contracting with BCFR/BCSO for those services – would likely prefer to make that decision prior to purchasing new radio consoles.



## Timing – 911 Administration

- As more residents discontinue using landlines and increase use of cellular phones, and as (pre-paid or no-contract) cellular providers decline to charge a monthly 911 fee, revenues with which to operate the 911 system decrease.
- A major priority of the state's 911 grant program is consolidation of Public Safety Answering Points.
- 4 of the county's 11 PSAPs are located on barrier islands. Funds will not be available to replace them following a disaster.



## Why is it important?

- Palo Alto is building a new public-safety facility for its police and fire headquarters & EOC:
- Their task force's report notes that when public-safety facilities "decline into **substandard or unsafe conditions, both those who use them and the community that depends on them are in jeopardy.**"



**2014-2015  
Legislative Program**



**Table of Contents**

2014-2015 Legislative Priorities..... 3

Finance, Tax & Administration..... 6

Growth Management, Agriculture & Environment ..... 9

Health & Human Services ..... 19

Public Safety ..... 23

Federal..... 28

## 2014-2015 Legislative Priorities

**\*Tax Reform:** **SUPPORT** tax reform measures that simplify administration and provide an economic boost to Florida's taxpayers while at the same time *considering and minimizing the collective and cumulative negative impact on local revenues*, including state shared and local discretionary revenue sources that are critical to local governments in providing community services.

Potential tax proposals that are of major concern to FAC include, but are not limited to:

A. Communications Services Taxes

**SUPPORT** amending and/or revising current law in a manner that is: 1) revenue neutral; 2) simplifies administration and collection of the current tax; 3) provides for a broad and equitable tax base; 4) provides for enhanced stability and reliability as an important revenue source for local government; and 5) provides the opportunity for market-based growth.

**OPPOSE** legislation that would revise current law in a manner that significantly reduces current local government related revenues.

B. Sales Tax Exemption on Commercial Leases

**OPPOSE** legislation that would exempt state sales tax and local option sales tax on commercial leases.

C. Property Taxes – "Elimination of Recapture Provision"

**OPPOSE** legislation that would eliminate the existing recapture provisions in Florida Statute

D. Local Discretionary Revenue Flexibility

**SUPPORT** modifications to existing laws governing local discretionary sales tax revenue sources to provide greater simplification, flexibility and more efficient administration and management.

**\*Economic Development:** **SUPPORT** measures that empower local governments and provide resources to work with community partners towards the creation of quality jobs, more vibrant Florida communities and global competitiveness as envisioned by the Florida Chamber Foundation's 20 year strategic plan.

Related issues that are of major interest to FAC for the 2015 Legislative session include, but are not limited to:

- A. Enterprise Zones **SUPPORT** legislation that reauthorizes statewide enterprise zone incentive programs.
- B. Film/Television Entertainment Production Tax Incentives **SUPPORT** legislation that would enhance the current incentives program to support and incentivize local governments to create and maintain a more sustainable and competitive physical and financial environment for attracting film, television, digital and new media related entertainment production in the State of Florida that promotes and is tied to infrastructure and workforce education in science, technology, engineering, arts and math.

**\*Amendment 1–The Florida Water and Land Conservation Amendment:** **SUPPORT** a balanced distribution of funds for land acquisition and for water quality and quantity projects throughout the state, with equitable allocation irrespective of a project's urban or rural nature, or its coastal or inland location. **SUPPORT** land acquisitions of less than fee simple interest, thus reducing the cost to taxpayers while generating revenue, and allowing property owners to continue certain uses with negotiable terms. **SUPPORT** an allocation policy that involves local government participation in priority assessment and community impact. **OPPOSE** the use of Amendment 1 to supplant current funding for beach renourishment, springs protection and other uses allowed in Amendment 1. **SUPPORT** the continued funding of the Water Management Lands Trust Fund and the annual reserve for payments in lieu of taxes for ad valorem losses incurred as a result of water management district acquisition or charitable donation. **SUPPORT** the provision of PILT payments at a level that reflects current ad valorem revenues with adjustments to reflect any increase in property value in the future.

\***Medicaid County Cost Cap:** **SUPPORT** establishing a cap on growth in the individual county Medicaid costs under s. 409.915, F.S. to address the anticipated cost shifts that result from the transition to a Medicaid enrollee based cost-sharing system.

\***Juvenile Detention Cost Share:** **SUPPORT** the state taking full responsibility for funding and operation of detention facilities serving juveniles, both for pre-disposition and post-disposition days and implementing juvenile justice reform, as recommended by the Detention Cost Share Proviso Workgroup. In the alternative, **SUPPORT** funding for the secure detention as upheld by Florida's courts. **SUPPORT** allowing counties to pay actual costs on a monthly reimbursement basis.

## Finance, Tax and Administration

Davin J. Suggs, Fiscal Policy Director  
Email: [dsuggs@fl-counties.com](mailto:dsuggs@fl-counties.com)  
Phone: 850-922-4300 or Fax: 850-488-7501

### FINANCE & TAX POLICY

**Remote Sales Tax/"Main Street" Fairness Act: SUPPORT** legislation that promotes an equitable competitive environment between "Brick and Mortar" businesses and remote business establishments conducting business in Florida.

**Tax Reform: SUPPORT** tax reform measures that simplify administration and provide an economic boost to Florida's taxpayers while at the same time *considering and minimizing the collective and cumulative negative impact on local revenues*, including state shared and local discretionary revenue sources that are critical to local governments in providing community services.

Potential tax proposals that are of major concern to FAC include, but are not limited to:

A. Communications Services Taxes

**SUPPORT** amending and/or revising current law in a manner that is: 1) revenue neutral; 2) simplifies administration and collection of the current tax; 3) provides for a broad and equitable tax base; 4) provides for enhanced stability and reliability as an important revenue source for local government; and 5) provides the opportunity for market-based growth.

**OPPOSE** legislation that would revise current law in a manner that significantly reduces current local government related revenues.

B. Sales Tax Exemption on Commercial Leases

**OPPOSE** legislation that would exempt state sales tax and local option sales tax on commercial leases.

C. Property Taxes – "Elimination of Recapture Provision"

**OPPOSE** legislation that would eliminate the existing recapture provisions in Florida Statute.

D. Local Discretionary Revenue Flexibility

**SUPPORT** modifications to existing laws governing local discretionary sales tax revenue sources to provide greater simplification, flexibility and more efficient administration and management.

**ECONOMIC DEVELOPMENT**

**Economic Development:** **SUPPORT** measures that empower local governments and provide resources to work with community partners towards the creation of quality jobs, more vibrant Florida communities and global competitiveness as envisioned by the Florida Chamber Foundation's 20 year strategic plan.

Related issues that are of major interest to FAC for the 2015 Legislative session include, but are not limited to:

- A. Enterprise Zones **SUPPORT** legislation that reauthorizes statewide enterprise zone incentive programs.
- B. Film/Television Entertainment Production Tax Incentives **SUPPORT** legislation that would enhance the current incentives program to support and incentivize local governments to create and maintain a more sustainable and competitive physical and financial environment for attracting film, television, digital and new media related entertainment production in the State of Florida that promotes and is tied to infrastructure and workforce education in science, technology, engineering, arts and math.

**APPROPRIATIONS**

**Specific County Based Appropriations:** **SUPPORT** maintaining current state appropriations critical to the delivery of public services at the county government level as it relates to currently funded county based appropriations in the SFY 2014-2015 budget. **SUPPORT** maintenance of existing appropriations currently funded in support of fiscally constrained counties.

**BUDGET & FINANCE ADMINISTRATION**



**Value Adjustment Boards: OPPOSE** legislation that would harm the ability of Value Adjustment Boards in fulfilling its role as intended by the State Constitution.

### **GENERAL ADMINISTRATION**

**Regulation of Taxis and Limousines:** FAC **SUPPORTS** maintaining the integrity of home rule power, which allows counties to regulate taxis, limousines, and jitneys for the purpose of public safety and consumer protection. Conversely, FAC **OPPOSES** any effort that preempts to the state the regulation of chauffeured limousines, limousine services and drivers of chauffeured limousines.

**Collective Bargaining:** **SUPPORT** legislation clarifying that constitutional officers can resolve impasse issues at the discretion of the constitutional officer.

**Elections:** **SUPPORT** full state funding of all expenditures by supervisors of elections to comply with the requirements of the federal Help America Vote Act.

**Procurement:** **SUPPORT** the non-publishing of detailed bid estimates by creating an exemption for county and municipality projects in statute. **SUPPORT** establishing an optional (alternative) process for state and local entities to consider cost in the award of professional services agreements pursuant to the Consultants' Competitive Negotiation Act.

**Public Notice:** **SUPPORT** legislation allowing local governments to comply with public notice and legal advertisement requirements by means other than the newspaper.

**Florida Retirement System (FRS): OPPOSE** any FRS benefit changes that result in an increase in the FRS county and county employee contribution rates. **SUPPORT** requiring all legislation that potentially results in an increase in the FRS contribution rate to be analyzed and evaluated to determine the direct fiscal impact of proposed changes to all local and state government to be eligible for consideration.

**Public Record and Open Meeting Exemptions for Economic Development:** **SUPPORT** changes to s.286.0113 and s.288.075, F.S., that would allow the Board of County Commissioners to deliberate in private regarding an economic development proposal and preserve the confidentiality of confidential information in the possession of an economic development agency.



**Growth Management, Agriculture,  
& Environment**

Eric Poole, Assistant Legislative Director  
Email: [epoole@fl-counties.com](mailto:epoole@fl-counties.com)  
Phone: 850-922-4300 Fax: 850-488-7501

Stephen James, Legislative Staff Attorney  
Email: [sjames@fl-counties.com](mailto:sjames@fl-counties.com)  
Phone: 850-922-4300 Fax: 850-488-7501

**GROWTH MANAGEMENT IMPLEMENTATION**

**Developments of Regional Impact: SUPPORT** legislation that strengthens intergovernmental coordination processes to ensure that land development projects resulting in adverse impacts on a neighboring jurisdiction are properly mitigated by the approving jurisdiction.

**Local Regulations / Private Property Rights: SUPPORT** an amendment to the Bert Harris Act (s.70.001, Florida Statutes) to specifically provide that a county's adoption of federal Flood Insurance Rate Maps (FIRM) and implementing regulations do not give rise to a cause of action under the Bert Harris Act.

**Growth Management Reform:** The growth reforms of 2011 represented the most significant changes to the state's planning laws in more than 25 years. While FAC does not oppose the revised planning process, it believes that no further revisions should occur without first evaluating the impact the 2011 changes have had on the economy, the environment, local and regional infrastructure, and community development. Accordingly, until such an evaluation takes place, **OPPOSE** any further reductions in state planning oversight or other efforts preempting local planning decisions.

**Expedited State Review: SUPPORT** changes to the Community Planning Act that would allow small counties to request the "State Coordinated Review Process" be used for the review of complex plan amendments.

**Concurrency:** In the absence of state-mandated transportation concurrency, and to ensure that the roads needed to support new development are concurrent with the impacts of development, **SUPPORT** county home rule authority, and current statutory provisions, which allow counties to retain their current transportation concurrency systems, as adopted by local ordinance.

**Rural Growth:** FAC recognizes that rural areas play an important role in our state's economy, environment, agriculture, and cultural history. However, from a planning

perspective, these areas have received much less attention than their urban and suburban counterparts. In view of this, **SUPPORT** the following:

- Restoring the full amount of local technical assistance monies (\$3.2 million) to the Department of Economic Opportunity, as originally provided under SB 360 (2005);
- Targeted technical assistance to small counties for specific comprehensive planning functions, including Rural Land Stewardship Area (RLSA) issues; and

**Proportionate Fair-Share Mitigation: SUPPORT** major revisions to the proportionate share statute to ensure that: (1) the funding formula and its application are clear and unambiguous; (2) local governments can determine if the payment is adequate to satisfy the concurrency management system; (3) each development can be charged its proportionate share of road improvements when the road is deficient or when development causes the road to become deficient; and, (4) development is not charged for existing deficiencies or backlog.

### **REGIONAL PLANNING**

**Regional Planning Councils (RPCs): SUPPORT** full funding of regional planning councils to, at a minimum, cover the costs of statutory responsibilities, and to support enhanced economic development activities. **OPPOSE** legislation prohibiting or restricting the ability of a regional planning council to provide planning and technical service to its local governments.

### **AFFORDABLE HOUSING**

**Affordable Housing: SUPPORT** retaining the full amount of dedicated documentary tax revenues to fund state and local affordable housing programs.

### **TRANSPORTATION FUNDING**

**Discretionary Sales Surtaxes (Charter County and Regional Transportation System Surtax): SUPPORT** current law allowing counties, who are eligible to levy the Charter County and Regional Transportation System Surtax, the discretion to enter into an inter-local agreement with cities, and expressway authorities for the purpose of sharing a portion of tax revenues. **FAC OPPOSES** any legislative efforts that reduce this authority, including those that would allow cities to levy all or a portion of the surtax through local referenda.

**State Transportation Trust Fund: OPPOSE** any effort to divert revenues from the state transportation trust fund for non-transportation purposes.

**Regional Transportation Finance Entities: SUPPORT** legislation that authorizes the creation of regional transportation finance authorities, who may be authorized to use tolls, or pledge a portion of the capacity improvement funds from the State Transportation Trust Fund to finance eligible transit or transportation improvement projects.

**Rural Transportation Funding: SUPPORT** state funding for the Small County Road Assistance Program (SCRAP). **SUPPORT** continuing enhanced state funding for the Small County Outreach Program (SCOP).

**Urban Transportation Funding:** To help reduce greenhouse gas emissions, promote energy conservation, and lower the number of vehicle miles traveled, **FAC SUPPORTS** a change to the state's transportation funding investment policy by creating a more flexible and balanced allocation of funds between transit and traditional highway capacity improvements.

### **TRANSPORTATION PLANNING & ADMINISTRATION**

**Managed Lanes: SUPPORT** changes to FDOT's "Managed Lanes" designation process to ensure counties have proper notice and are given an adequate comment period relating to any state road corridor that is proposed to include managed lanes. Additionally, revenues derived from managed lane operations that are in excess of the amounts needed to pay debt service, operations, or maintenance directly related to the managed lanes in any given year, shall be returned to the county where such revenues were generated for transit or transportation program expansion, improvement, or enhancement.

**Metropolitan Planning Organizations: OPPOSE** FDOT efforts to require urbanized areas (UZAs) with multiple MPOs to submit one combined project priority list.

**Leasing of State Roads: OPPOSE** the State of Florida leasing any existing state-owned toll road to a private concessionaire without creating a more transparent and inclusive process for FDOT to follow when considering leasing state-owned toll roads. **SUPPORT** statutory changes that would:

- Include an early local government notification process;
- Ensure local governments provide comments to the agency prior to it soliciting proposals relating to the leasing of a toll road;
- Authorize the use of any remaining toll revenues from a lease agreement to be returned to the affected counties to provide funding for transportation related

- activities, including but not limited to, reimbursing counties for fire and emergency rescue services associated with the leased facility; and
- Authorize the use of any upfront revenues (a.k.a., lease payment) and any excess revenues from a lease agreement to include non-SIS facilities and other non-capacity projects, including transit, as identified by the Metropolitan Planning Organization within the county or counties where the lease road is located.

**County Transportation Projects: SUPPORT** increasing the cost cap (from \$400,00 to \$750,000) for counties to self-perform road improvement projects using the Constitutional Gas Tax proceeds.

**Strategic Intermodal System (SIS): SUPPORT** legislation allowing SIS funds to be used on roads and other transportation facilities not designated on the SIS network if the improvement relieves congestion on the SIS.

## **AGRICULTURE**

**Agricultural Protections: SUPPORT** policies and legislation that curb abuse of statutory agricultural protections by real estate speculators and developers, while protecting principles of investment backed expectation.

**Rural and Family Lands Protection Act: SUPPORT** funding the Rural and Family Lands Protection Act to allow for the purchase of rural lands protection easements to prevent the subdivision and conversion of such land into other uses.

**Rural Land Stewardship Areas (RLSAs): SUPPORT** Rural Land Stewardship Areas (RLSAs) to maintain the economic value of rural land in Florida, protect the character of rural areas, ensure the viability of our agricultural economy, and control urban sprawl. **SUPPORT** local match funding for technical assistance and planning needed by local government to implement RLSAs.

**Sustainable Agriculture Incentives: SUPPORT** legislation that encourages and incentivizes sustainable agriculture, and the maximization of local food production.

**Citrus Greening: SUPPORT** state, federal and local efforts to include research and assist the citrus industry in addressing and controlling the damage and threat caused by citrus greening/Huanglongbing (HLB).

## **LAND CONSERVATION**

**Amendment 1—The Florida Water and Land Conservation Amendment:** **SUPPORT** a balanced distribution of funds for land acquisition and for water quality and quantity projects throughout the state, with equitable allocation irrespective of a project's urban or rural nature, or its coastal or inland location. **SUPPORT** land acquisitions of less than fee simple interest, thus reducing the cost to taxpayers while generating revenue, and allowing property owners to continue certain uses with negotiable terms. **SUPPORT** an allocation policy that involves local government participation in priority assessment and community impact. **OPPOSE** the use of Amendment 1 to supplant current funding for beach renourishment, springs protection and other uses allowed in Amendment 1. **SUPPORT** the continued funding of the Water Management Lands Trust Fund and the annual reserve for payments in lieu of taxes for ad valorem losses incurred as a result of water management district acquisition or charitable donation. **SUPPORT** the provision of PILT payments at a level that reflects current ad valorem revenues with adjustments to reflect any increase in property value in the future.

## **BEACHES AND SHORES**

**Beach Renourishment:** **SUPPORT** the continuation of a statutory funding source for beach renourishment. **SUPPORT** a cost-benefit and needs analysis of beach funding and an increase in state funding levels over the current amount of \$30 million, which is no longer sufficient to sustain the program. **SUPPORT** a significant increase in statutory funding levels for beach projects as part of any implementing legislation related to Amendment 1, which passed in the November 2014 general election. **SUPPORT** the revision of statutory criteria for the annual ranking of beach projects for state cost sharing, specifically, criteria that recognize economic benefits and cost-effectiveness, the reduction in storm damage, and the ability to leverage federal dollars.

**Beach Access:** **SUPPORT** the preservation of public access to and along beaches and state water bodies and county regulatory authority.

**Working Waterfronts:** **SUPPORT** funding sources and statutory provisions to assist local governments with: 1) the acquisition of property or development rights, 2) the preservation of commercial working waterfronts; 3) the improvement of recreational opportunities and public access.

**Vessels and Waterways:** **SUPPORT** continued state funding of derelict vessel removal. **SUPPORT** continued state and local regulation of vessels, mooring fields,

bulkheads and seawalls, floating vessel platforms, and seagrasses. **SUPPORT** greater county authority to regulate vessels in navigation outside of designated mooring fields.

### **LAND USE REGULATION**

**Billboards: OPPOSE** legislation that preempts or dilutes local government's ability to establish and maintain local ordinances which regulate billboards and outdoor advertising.

**Dangerous Captive Wildlife: SUPPORT** enhanced interagency coordination between the counties and the Florida Fish and Wildlife Conservation Commission (FWCC) relating to land use regulations regarding dangerous captive wildlife. **SUPPORT** the listing of iguanas as a "reptile of concern" or, in the alternative, removing the current Class III permitting exemption.

**Mining: OPPOSE** any reduction in the county government role in siting mines for the production of construction aggregate or other minerals. **OPPOSE** any reduction in county authority to regulate local concerns relating to the operation of mines including, but not limited to, hours of operation, noise, traffic and dust.

### **ENERGY**

**Incentives: SUPPORT** incentives for local governments to assist in state energy policies such as green building and carbon emission reductions, and the technical assistance to implement these programs.

**Climate Change: SUPPORT** a comprehensive state climate change action plan, with energy policies and other initiatives to reduce carbon dioxide and other compounds in the atmosphere and address ecosystem sustainability, long term water supply, flood protection, public health and safety, and economic growth and prosperity. **SUPPORT** state and federal recognition of adaptation and mitigation as critical to any climate change plan, and the funding necessary to assist local governments in developing and implementing climate change initiatives.

**Renewable Energy: SUPPORT** streamlining the permitting and regulatory processes for solar products and installers. **SUPPORT** legislative incentives to encourage net metering and feed-in tariff programs, and the regulatory clarification that net metering should apply to each customer, rather than each meter, so that condominiums and other multi-unit buildings with a single solar system can apply the benefit to multiple users. **SUPPORT** a Clean Portfolio Standard (CPS), or alternatively, a Renewable Portfolio Standard (RPS) for the State of Florida. **SUPPORT** legislative authorization for

solar energy product manufacturers to train contractors and supervise installation without being required to obtain a contracting license. **SUPPORT** incentives to promote the use of solar power purchase agreements and solar leases. Additionally, **SUPPORT** statutory authorization, if needed, for local governments to create energy financing districts on a voluntary basis.

### **ENVIRONMENTAL PERMITTING**

**Delegation:** **SUPPORT** increased delegation to local government where resources exist to accept partial or complete delegation of state environmental regulatory programs. **OPPOSE** mandatory delegation as many local environmental programs seek only to fill in the gaps of state and federal regulatory programs.

**Permit Streamlining:** **SUPPORT** legislation that is thoroughly vetted with all stakeholders, and that takes a targeted approach to increasing regulatory efficiencies, rather than broadly preempting local government authority. **OPPOSE** legislation that prevents counties from having local environmental programs that are more stringent than state or federal regulatory programs.

**Conservation Lands:** **SUPPORT** legislation that provides future state funding for the management and maintenance of conservation lands transferred to county control. **SUPPORT** improved management of state conservation lands and increased public access to those lands. **SUPPORT** the authority of county government to purchase and sell conservation lands in accordance with local needs, charter requirements, ordinance requirements or financial capacity.

**Sovereign Submerged Lands:** **SUPPORT** the current case law definition of the "ordinary high water mark" which delineates state lands from private lands. **OPPOSE** any changes having the effect of transferring large quantities of wetlands and uplands from state ownership to private ownership.

### **SOLID WASTE**

**Solid Waste Funding:** **SUPPORT** reinstating state funding of Solid Waste Management Grants. **SUPPORT** maintaining the waste tire fee as a dedicated revenue source for funding mosquito control programs and waste tire recycling.

**Solid Waste Regulation:** **OPPOSE** any diminution of county authority to franchise and otherwise regulate construction and demolition debris (C&D) haulers, recyclers, or disposal facilities.

**Recycling: SUPPORT** legislation that provides appropriate resources and incentives to local governments to achieve statewide recycling goals. **SUPPORT** a recycling credit for all recycled materials including municipal biomass and other waste-to-energy processes. **OPPOSE** legislation that imposes fees or taxes on local governments for collecting waste, which is an essential governmental service. Any recycling plan promulgated by the state must consider market and state-wide economic conditions. **SUPPORT** removing the exemption in s.403.7046(3), F.S., so that local government may require commercial establishments to convey source-separated recovered materials to the local government or to a facility designated by the local government for recycling.

### **DOMESTIC WASTE**

**Land Application of Septage: SUPPORT** legislative policies that recognize the challenges of septage disposal in rural counties without adequate treatment facilities and Class I landfills, and the prioritization of funding for the construction of such facilities and associated infrastructure.

**Central Sewer Systems: SUPPORT** the authority of county government to require mandatory connection to central sewer systems as they become available.

### **WATER RESOURCES**

**Water Funding: SUPPORT** legislation that enhances regional and local financial capacity to address water supply development and the flexibility of all available funding sources. **SUPPORT** the funding of the Water Protection and Sustainability Program within the Department of Environmental Protection for the development of alternative water supplies, water quality improvement projects, and comprehensive water infrastructure needs. **SUPPORT** sustained commitment of state resources for regional systems of statewide importance, such as rivers, springs and the Everglades. **SUPPORT** renewed funding for alternative water supply projects, conservation, and the TMDL program.

**Water Supply: OPPOSE** any shift of the water supply allocation process from publicly regulated to a market driven process. **SUPPORT** the fundamental principles of Florida water law which:

- Requires demonstration that a proposed use of water is a reasonable-beneficial use, will not interfere with an existing legal use of water, and is consistent with the public interest to protect water and related natural resources.
- Establishes a right of use, not a right of ownership.

- Provides for "local sources first" – that is, a county in which water is withdrawn shall not be deprived directly or indirectly of the prior right to reasonable and beneficial use of water to supply the needs of its natural systems, property owners, or inhabitants.

**OPPOSE** any state-wide water commission or "water czar" which would redefine the water supply relationship among the state, water management districts, and local governments. **SUPPORT** the enhancement of local government participation in the water management district planning, permitting and regulatory processes, including proposed reservations, minimum flows and levels, and recovery and prevention strategies. **SUPPORT** removal of the current sales tax exemption on bottled water.

**Water Quality: SUPPORT** measures to preserve county authority to address water quality problems and the flexibility to craft solutions at the local level.

**Indian River Lagoon & Lake Okeechobee Basin: SUPPORT** state funding for the construction of additional water storage and water quality treatment facilities within the Lake Okeechobee, Caloosahatchee, St. Lucie and Indian River Lagoon watersheds. **SUPPORT** state funding for domestic wastewater infrastructure that would reduce nutrient loading from septic tanks within the Lake Okeechobee Basin.

**Springs Protection: SUPPORT** state funding for nutrient load reduction programs within Florida's springsheds. **SUPPORT** state funding for projects that will improve water quantity and water quality within Florida's springsheds.

**Fertilizer: SUPPORT** the authority of county government to regulate the use and application of fertilizer to protect water quality. **SUPPORT** the "Florida Green Industries Best Management Practices" as a basic level of water quality protection, with more stringent protection authorized to address water bodies in need. **SUPPORT** legislation that would allow counties to develop regional approaches to nutrients, fertilizer, and other water quality issues that take into account particular local concerns relating to geology and hydrology.

## **UTILITIES**

**SUPPORT** legislation that encourages and supports "goal-based water conservation initiatives through permit incentives and the use of conservation best management practices developed by the utility industry.

**SUPPORT** legislation that recognizes the responsibility and authority of local government utilities to establish rates and rate structures to allow for flexibility in the provision of services and the sustainable funding of operations.

**Utility Certification : SUPPORT** legislation that requires the PSC to consider local county comprehensive plans in determining whether to grant a certificate to a private utility. **OPPOSE** legislation that would amend the PSC statute to disregard a demonstration of need in determining whether to grant a certificate to a private utility.

**Utility Liens: SUPPORT** legislation to amend Section 159.17, Florida Statutes, to authorize counties – as well as municipalities – that issue revenue bonds to place liens on properties served by any water, sewer or gas systems for service charges until paid, which liens shall be prior to and on parity with state, county and municipal tax liens.

**Stormwater Fees: SUPPORT** legislation to amend Section 403.0893, Florida Statutes, to provide authorization for stormwater utilities to charge and collect user fees from all beneficiaries of the stormwater utility system.

#### **OTHER**

**Community Resiliency: SUPPORT** increased funding for infrastructure projects and planning activities to facilitate the prevention of and recovery from damage to essential transportation systems, water management systems and national resources as a result of natural and/or disasters.

**Water Management Districts: SUPPORT** legislative priorities which require adjacent water management district to collectively implement recovery and prevention strategies to address water bodies that fall below, or are projected to fall below applicable MFLs.

## Health & Human Services

Susan Harbin, Legislative Advocate  
Email: sharbin@fl-counties.com  
Phone: 850-922-4300 Fax: 850-488-7501

### HEALTHCARE

**Behavioral Health System: SUPPORT** increased funding for core mental health and substance abuse services. **SUPPORT** continued efforts to work through Medicaid reform initiatives to ensure that persons with substance abuse and mental health treatment needs are appropriately served. **SUPPORT** efforts to increase supportive housing, employment and education initiatives for people with behavioral health issues and/or disabilities.

**County Health Departments (CHDs): SUPPORT** increasing state general revenue funding for CHDs, and **OPPOSE** any state reductions to the CHD Trust Funds. **SUPPORT** restoring funding reductions in operating support for CHDs. **SUPPORT** efforts to enable CHDs to transition to managed care under the Statewide Medicaid Managed Care Program without impacting service capacity. **SUPPORT** maintaining a coordinated system of CHDs that is centrally housed within the Department of Health (DOH). **SUPPORT** preserving the ability of CHDs to provide primary care and direct patient care services, particularly in communities without adequate substitutes or alternative providers for these services.

**County Share of Cost for Medicaid Services: SUPPORT** continued evaluation of the county-state Medicaid cost-share arrangement, taking into consideration the impacts of state policies designed to contain growth in Medicaid costs, including statewide Medicaid managed care and diagnosis related group reimbursement for hospitals. Additionally, consider possible alternatives to the current arrangement, including but not limited to:

- Alternative financing mechanisms;
- Targeted local investment of the statutory county Medicaid contribution;
- Allocation of **state** funds to reduce the cost-shift created by the implementation of an enrollment-based formula; and
- Elimination of the unfunded mandate.

**SUPPORT** establishing a cap on growth in the individual county Medicaid costs under s. 409.915, F.S. to address the anticipated cost shifts that result from the transition to a Medicaid enrollee based cost-sharing system.

**OPPOSE** efforts to further shift state Medicaid costs to counties.

**Low Income Pool/IGT Distribution: SUPPORT** a system for distributing intergovernmental transfers (IGTs) that ensures donor counties are able to direct the federal matching dollars generated by their local IGT contributions to best meet the health care needs of their constituents, rather than having those dollars redistributed throughout the state. **OPPOSE** the tiered hospital rate system for distributing IGTs as established in sec. 409.97(4), F.S.

**Healthcare Expansion: SUPPORT** state legislation drawing down the federal funds made available to Florida under the Patient Protection and Affordable Care Act to expand health insurance coverage to certain individuals who earn up to 138 percent of the federal poverty level, provided that such a program does not further shift Medicaid costs to counties.

**Baker Act: SUPPORT** appropriate funding as outlined in the existing state capacity formula for crisis mental health and substance abuse beds statewide. **SUPPORT** increased funding for public receiving facilities and maintaining funding for public facilities if new state general revenue is provided to private receiving facilities.

**Emergency Medical Services (EMS): SUPPORT** ST Segment Elevated Myocardial Infarction (STEMI) legislation that leads to better coordination of care without imposing additional liability or administrative costs on county government. **OPPOSE** legislation that preempts county authority to regulate use or register distribution of Automatic External Defibrillators (AEDs). **SUPPORT** a cost recovery mechanism if county provided training is mandated.

**Graduate Medical Education (GME): SUPPORT** efforts to fund GME programs to meet the healthcare needs of the state and its local communities, with a particular emphasis on programs that provide for specialties in need as well as the development of physicians practice in medically underserved areas.

**Statewide Medicaid Managed Care Program: SUPPORT** including County Health Departments as priority providers within the Medicaid Managed Care Program and protect their ability to deliver primary care services to the communities they serve. **SUPPORT** carving out the coordinated Transportation Disadvantaged (TD) system to avoid fragmentation, inefficient operation, and costly duplication of TD services. **SUPPORT** the continuation of the Medically Needy program.

**Trauma Care System: SUPPORT** efforts to maintain and enhance established trauma care funding, including incentives for the development of new trauma centers. **OPPOSE** any efforts to shift the state's financial responsibility for the trauma system to

counties or divert trauma care funding for purposes other than those intended by the existing legislation.

### **HUMAN SERVICES**

**Healthy Start and Healthy Families: SUPPORT** a continuation of funding for the Florida Healthy Start and Healthy Families program.

**Smoking Regulation: SUPPORT** legislation that repeals the state statutory preemption of smoking regulation by allowing local governments to enact local regulations that exceed state standards. In lieu of a total repeal of the preemption, **SUPPORT** legislation granting to local governments additional authority to restrict smoking on certain outdoor property. **OPPOSE** efforts to preempt local regulation of tobacco products and other nicotine dispensing devices.

**Homelessness: SUPPORT** developing a dedicated state funding source for homeless programs. **SUPPORT** legislation that streamlines current state statutes relating to homelessness and associated programs, including the funding allocation and appropriation processes. **SUPPORT** the implementation of discharge protocols and/or procedures for hospitals, correctional facilities, and mental health facilities when releasing homeless persons. **SUPPORT** the development of strategies that would allow local governments to work with the state and federal government to serve target populations: the chronically homeless, veterans, and families and children, with particular emphasis on children aging out of the foster care system. **SUPPORT** continued coordination with the state's homeless planning council, specifically as it develops policies in support of the new Federal Strategic Plan to End Homelessness. **SUPPORT** efforts to extend tax credits to businesses that employ the homeless. **SUPPORT** creation of a public records exemption for individual identifying information entered into the Homeless Management Information System (HMIS).

**Veterans: SUPPORT** legislation establishing a designation program that allocates state funds to hire Veterans Services Officers to increase services and federal benefits for Florida veterans.

**Transportation Disadvantaged (TD): SUPPORT** efforts to avoid fragmentation, inefficient operation, and costly duplication of TD services. **SUPPORT** appropriate and dedicated state funding for the TD program. **SUPPORT** efforts to protect the TD trust fund.

**Community Care for the Elderly: SUPPORT** restoration and expansion of state funding for the Community Care for the Elderly Program, which provides cost efficient diversion from nursing home placement for impaired elders.



**Open Water Life Guards: SUPPORT** legislation that would provide for open water lifeguard agency certification in Florida.

**Recovery Residences: SUPPORT** legislation defining and establishing minimum regulatory standards for recovery residence facilities, while also allowing more stringent local regulation.

## Public Safety

Lisa M. Hurley, Esq., Legislative Director  
[lhurley@fl-counties.com](mailto:lhurley@fl-counties.com)  
Phone: 850-922-4300 Fax: 850-488-7501

Eric Poole, Assistant Legislative Director  
Email: [epoole@fl-counties.com](mailto:epoole@fl-counties.com)  
Phone: 850-922-4300 Fax: 850-488-7501

## JUDICIAL SYSTEM

**Article V: SUPPORT** eliminating the requirements of s. 29.008(4)(a), F.S., that require counties to fund certain court expenditures by 1.5 percent over the prior county fiscal year.

**Court Technology Fee: SUPPORT** increasing the service fee charged for recording documents and instruments pursuant to s. 28.24(12)(e), F.S., from \$4.00 to \$8.00, so that \$6.00 of the fee is distributed to boards of county commissioners to help fund court-related technology and technology needs as mandated by s. 29.008(1)(f)(2), F.S.

**Flexibility in Additional Court Costs for Criminal/Traffic Offenses: SUPPORT** legislation giving counties more flexibility in the use of the funds generated by the discretionary \$65.00 cost on criminal and traffic cases provided in s. 939.185, F.S.

**Pretrial Service Agencies: SUPPORT** maintaining county ability to provide non-monetary and risk assessment pretrial release services that ensure the safety and welfare of local communities by preventing new offenses and ensuring those appear as obligated. **OPPOSE** legislation limiting the discretion of the first appearance judge, requiring written reports and eliminating the presumption of release on non-monetary conditions. **SUPPORT** changing pretrial program reporting requirements as provided in s. 907.043, F.S., from weekly to monthly updates. **OPPOSE** legislation that restricts pretrial services to only indigent defendants and **SUPPORT** legislation that requires bail bondsmen to report information as required of pretrial service agencies in s.907.043 F.

**Traffic Hearing Officer Program: SUPPORT** full funding for traffic hearing officer programs statewide and allow magistrates to handle cases resulting from red light camera offenses.

## IMPACTS TO COUNTY JAILS

**Small County Courthouse Funding: SUPPORT** continued state general revenue funding for capital improvements to county courthouses and other court-related facilities, including jails, located in rural counties.

**Core Services and Funding for Persons with Behavioral Health Issues or Disabilities and maintaining Medicaid eligibility for inmates: SUPPORT** appropriate funding for core mental health and substance abuse services. **SUPPORT** continued efforts to work through Medicaid reform initiatives to ensure that persons with substance abuse and mental health treatment needs are appropriately served. **SUPPORT** continued efforts to obtain Medicaid eligibility for persons incarcerated in county jails while waiting disposition of their cases. **SUPPORT** efforts to increase supportive housing, jail diversion, and employment and education initiatives for people with behavioral health issues and/or disabilities.

**Inmate Medical Costs: SUPPORT** legislation that reduces jail expenses by setting a reimbursement amount paid by counties to medical providers for health care services for inmates and arrestees at no higher than the established Medicare rate plus 10%, the same rate as currently charged to the Department of Corrections, unless there is an existing contract in place or a business practice providing a lower rate.

**Shift of Prison Inmates to Jails: OPPOSE** any efforts to shift inmates with less than a year on their sentence at the time of sentencing to jails instead of prisons.

**Mentally Ill and Substance Abuse: SUPPORT** increased funding of the Criminal Justice Mental Health and Substance Abuse Reinvestment Grant Program with recurring dollars in a trust fund. **SUPPORT** sustainable matching state funds to counties that have received both planning and implementation Reinvestment Grant funds.

### **JUVENILE JUSTICE**

**Juvenile Detention: SUPPORT** the state taking full responsibility for funding and operation of detention facilities serving juveniles, both for pre-disposition and post-disposition days and implementing juvenile justice reform, as recommended by the Detention Cost Share Proviso Workgroup. In the alternative, **SUPPORT** funding for the secure detention as upheld by Florida's courts. **SUPPORT** allowing counties to pay actual costs on a monthly reimbursement basis.

**SUPPORT** initiatives which reduce juvenile detention through prevention, treatment, and rehabilitation services.

**Juvenile Detention Facilities: SUPPORT** the legislature appropriating state funds to the Department of Juvenile Justice to upgrade, renovate, or reconstruct detention centers across Florida that are in a state of disrepair. **SUPPORT** state investments in

juvenile facilities to improve the conditions of secure confinement for detained youth without such costs being shifted to the counties.

**Cost of Care: SUPPORT** legislation allowing counties to charge juveniles, or the parents of juveniles, for the costs of providing pre-adjudicatory, secure detention care based on their availability to pay.

**Juvenile Assessment Centers (JAC Centers): SUPPORT** state funding of JAC Centers throughout Florida to strive to achieve equal treatment of youth offenders.

### **GENERAL PUBLIC SAFETY**

**Medical Marijuana:** If there is an effort to expand or modify the use of medical marijuana **SUPPORT** legislation that provides a comprehensive health-based regulatory system where the Department of Health is responsible for licensing cultivation sites, dispensing facilities and manufacturers of marijuana for medicinal purposes subject to local ordinances, including but not limited to occupational licensing, regulation and zoning laws.

**Synthetic Drugs: SUPPORT** expanding the controlled substance schedule to include new iterations of synthetic formulas that mimic the effects of illegal drugs. **SUPPORT** prohibiting certain types of packaging and marketing of any products claiming to mimic the effects of illegal drugs.

**Pain Management Clinics: OPPOSE** preemption of the regulation of pain management clinics to the state.

**County Emergency Radio Systems: OPPOSE** legislation that would shift funds or impede counties from building and maintaining an interoperable radio communication system as authorized by statute.

**Crime Lab Funding: SUPPORT** additional funding for locally-operated crime analysis laboratories.

**Copper and Other Metals Thefts: SUPPORT** legislation strengthening laws related to copper and other metals thefts and secondary metals recyclers to deter thefts from local governments, businesses and individuals. **SUPPORT** legislation increasing the penalties for illegal purchase of scrap metals. **OPPOSE** legislation preempting local scrap metal ordinances from being more restrictive.

## **EMERGENCY MANAGEMENT**

**Emergency Management Preparedness and Assistance (EMPA) Trust Fund:** **SUPPORT** maintaining the original intent and purpose of the EMPA Trust Fund, which is to serve as a funding source for state and local emergency management programs, by ensuring that all monies collected for purposes of funding emergency management, preparedness and assistance are deposited into the EMPA Trust Fund and spent on emergency management activities. Accordingly, FAC's **OPPOSES** legislative sweeps of the EMPA trust fund for non-emergency management purposes and **SUPPORTS** an increase to the county base grant funding, which has remain unchanged for nearly a decade. **SUPPORT** changes to the EMPA trust fund by ensuring the \$2.00 and \$4.00 annual surcharge on all homeowner and business insurance policies is assessed on either a per-parcel or per-unit basis of coverage, rather than on a single policy. **SUPPORT** a repeal of the service charge to general revenue on the EMPA trust fund and redirect these monies back to the counties in the same manner in which the EMPA base grant is distributed.

**Shelter Funding and Standards:** Consistent with the provisions of s. 252.385, F.S., which states that it is the intent of the Legislature that this state not have a deficit of safe shelter space by 1998 and thereafter, **SUPPORT** additional state funding for hurricane shelter spaces, including retrofitting existing facilities, and providing for the increased cost of construction for Enhanced Hurricane Protection Areas (EHPA) associated with new school construction. **SUPPORT** statutory revisions requiring nursing homes and assisted living facilities to have back-up power supply sources that operate a majority of the mechanical systems in the facility for a minimum of 72 hours. **SUPPORT** state funding for county and regional special needs patients and shelters.

**Background Checks for Emergency Volunteers:** **SUPPORT** a legislative review of the intent of background screening requirements of Chapter 2010-14, Laws of Florida with respect to volunteers in emergencies.

**Persons with Special Needs:** **SUPPORT** legislative changes to s.252.355 F.S. that provide additional privacy protections to all individuals who voluntarily register with local emergency management agencies.

**Emergency Operation Centers (EOCs):** **SUPPORT** continued state funding for county EOCs to ensure each is able to meet the minimum structural survivability and operational space criteria established by the state and federal government and the American Red Cross.

**Disaster Funding:** **SUPPORT** a 50/50 cost-share arrangement with the state for the non-federal portion of the Hazard Mitigation Grant Program (HMGP). **SUPPORT** the



current HMGP fund allocation and project selection process defined in Rule 9G-22, Florida Administrative Code. **SUPPORT** the creation of an emergency bridge loan program for counties to provide a source of expedient cash flow to counties impacted by a major catastrophe. Alternatively, **SUPPORT** expanding the current Florida Small Business Emergency Loan Program by making counties eligible applicants.

**Emergency Management Credentialing:** To strengthen the professionalism of County Emergency Management Directors, **SUPPORT** efforts that provide enhanced training and education opportunities for County Emergency Management employees. **OPPOSE** any state mandated training and hiring requirements for County Emergency Management Directors.

## Federal

Lisa M. Hurley, Esq., Legislative Director  
[lhurley@fl-counties.com](mailto:lhurley@fl-counties.com)  
Phone: 850-922-4300 Fax: 850-488-7501

Eric Poole, Assistant Legislative Director  
Email: [epoole@fl-counties.com](mailto:epoole@fl-counties.com)  
Phone: 850-922-4300 Fax: 850-488-7501

### WATER

**Waters of the United States (WOTUS): SUPPORT** legislation that clarifies that local streets, gutters, and other stormwater infrastructure are excluded from the definition of "Waters of the U.S.," while also requiring federal agencies to consult with state and local officials to identify which waters should be federally regulated and which should be left to the states.

### TRANSPORTATION & INFRASTRUCTURE

**MAP-21 Reauthorization: SUPPORT** passage of a new surface transportation authorization bill that provides long-term funding certainty, restores solvency to the Highway Trust Fund, and distributes to high growth states like Florida at least 95% of all highway funds by formula.

#### **FEMA Mapping Procedures:**

- As FEMA amends flood hazard maps for Florida's counties, **SUPPORT** the agency's full coordination with local governments and technical experts to ensure technical and scientific accuracy of any final maps, which have the potential for negative economic impacts.

## Monitoring Issues

### NATIONAL FLOOD INSURANCE PROGRAM

**National Flood Insurance Program (NFIP) Reform:** FAC **SUPPORTS** legislative efforts, policies and programs that ensure all property owners can receive affordable flood insurance within a program framework that helps the NFIP become financially stable.

## **ENERGY, ENVIRONMENT & AGRICULTURE**

**Oil Pollution Act of 1990 (OPA): SUPPORT** revisions to OPA to provide for greater participation from local governments as primary first responders in the protection of local communities.

**Offshore Energy Production:** Monitor and report on the potential for expansion of offshore energy exploration in Florida's federal waters.

**Numeric Nutrient Criteria:** Monitor and report on activities associated with proposed numeric water quality criteria for lakes, flowing waters and canals.

## **TAX REFORM**

**Tax-Exempt Status of Municipal Bonds: SUPPORT** the preservation of the existing tax-exempt status of municipal bonds. Oppose legislative provisions that would repeal or eliminate the tax exempt status of municipal bonds. Oppose legislative provisions that would repeal, limit or "cap" the deduction for interest earned on new and outstanding municipal bonds.

**Marketplace Fairness Act:** Monitor and report on the status of legislative provisions for the collection of sales and use taxes from remote sellers and the effect on a state's ability to enforce state and local sales and use tax laws.

## **ENTITLEMENTS AND APPROPRIATIONS**

**Block Grants:** Monitor and report on the status of funding for the Social Services Block Grant, the Community Services Block Grant as well as the program's formula grant structure. Oppose any efforts to eliminate or reduce block grant funding.

**Immigration:** Monitor and report on the status of federal reimbursement to counties for all costs related to detaining, and transporting undocumented immigrants. Monitor and report on the reauthorization of the State Criminal Alien Assistance Program (SCAAP), to reimburse state and local costs of incarcerating undocumented criminal aliens.

## **HEALTHCARE & HUMAN SERVICES**

**Health Care:** Monitor and report on implications of health care reforms for potential fiscal and health delivery impacts. Monitor and report on implementation of the Patient

Protection and Affordable Care Act and changes to Medicaid that would further shift the financial burden to states and counties.

**Veterans Health: SUPPORT** NACo's efforts to assure that:

- U.S. Department of Veterans Affairs (VA) funds are made available to reimburse counties for the services provided to veterans eligible for VA services and for services provided to veterans awaiting determination of eligibility.
- VA funds are made available to reimburse services provided to veterans eligible for VA services by public and private providers under contract with the VA.
- U.S. Department of Defense (DOD) funds are made available to reimburse counties for the services provided to veterans eligible for DOD services.
- Appropriate county level data are available so that counties know how many veterans are returning to their local areas.