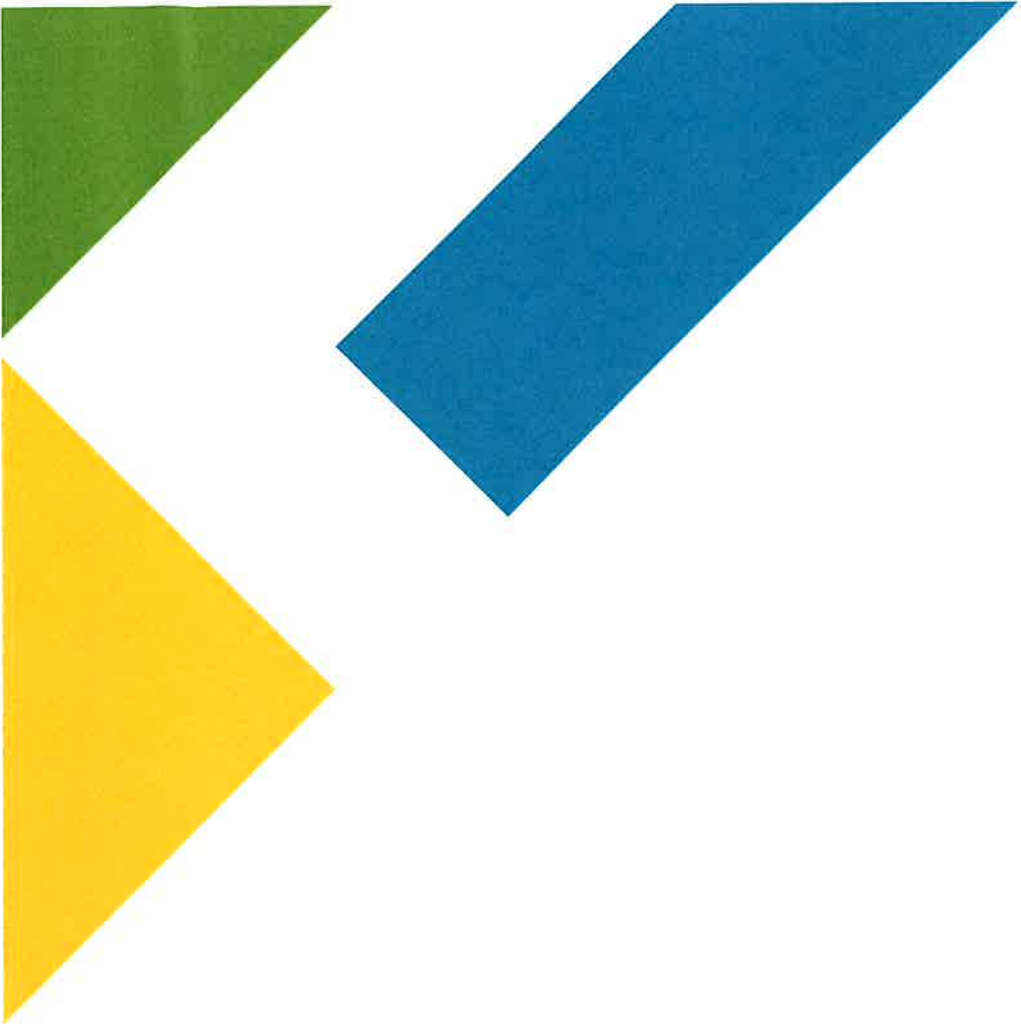


District 1 Agenda Items

April 8th, 2025



County CRA Funding



Community Redevelopment Agencies

21

CRA's Created after Effective Date of County's Home Rule Charter	Exp Date	FY2025 Payment
City of Cocoa - (Diamond Square)	Sep-32	\$122,949
City of Cape Canaveral	Sep-40	\$1,359,611
City of Cocoa Beach	Dec-33	\$493,222
City of Rockledge	Sep-26	\$1,219,560
City of Melbourne Eau Gallie	Sep-38	\$326,279
Brevard County/City of West Melbourne Joint CRA	Sep-38	\$638,520
CRA's Created prior to the County's Home Rule Charter		
City of Titusville Downtown Area	Oct-42	\$350,722
City Cocoa - Downtown Unit I	Apr-41	\$546,730
City of Melbourne Downtown Unit 1 K1	Dec-42	\$736,744
Merritt Island Redevelopment Agency	Aug-34	\$1,255,951
Merritt Island Redevelopment SeaRay Bridge	Sep-30	\$273,045

TOTAL CRA FUNDS:

\$7,323,333.00

D1 Portion: \$350,722.00

Incremental Tax History Since 2010 (TIF Payments)



Since 2010 (2010-2012 did not have NBEDZ Payments)

Total Payments Across County: \$120,912,168
North Brevard Total Payments: \$34,825,759
All Other District Payments Combined: **\$86,086,409**

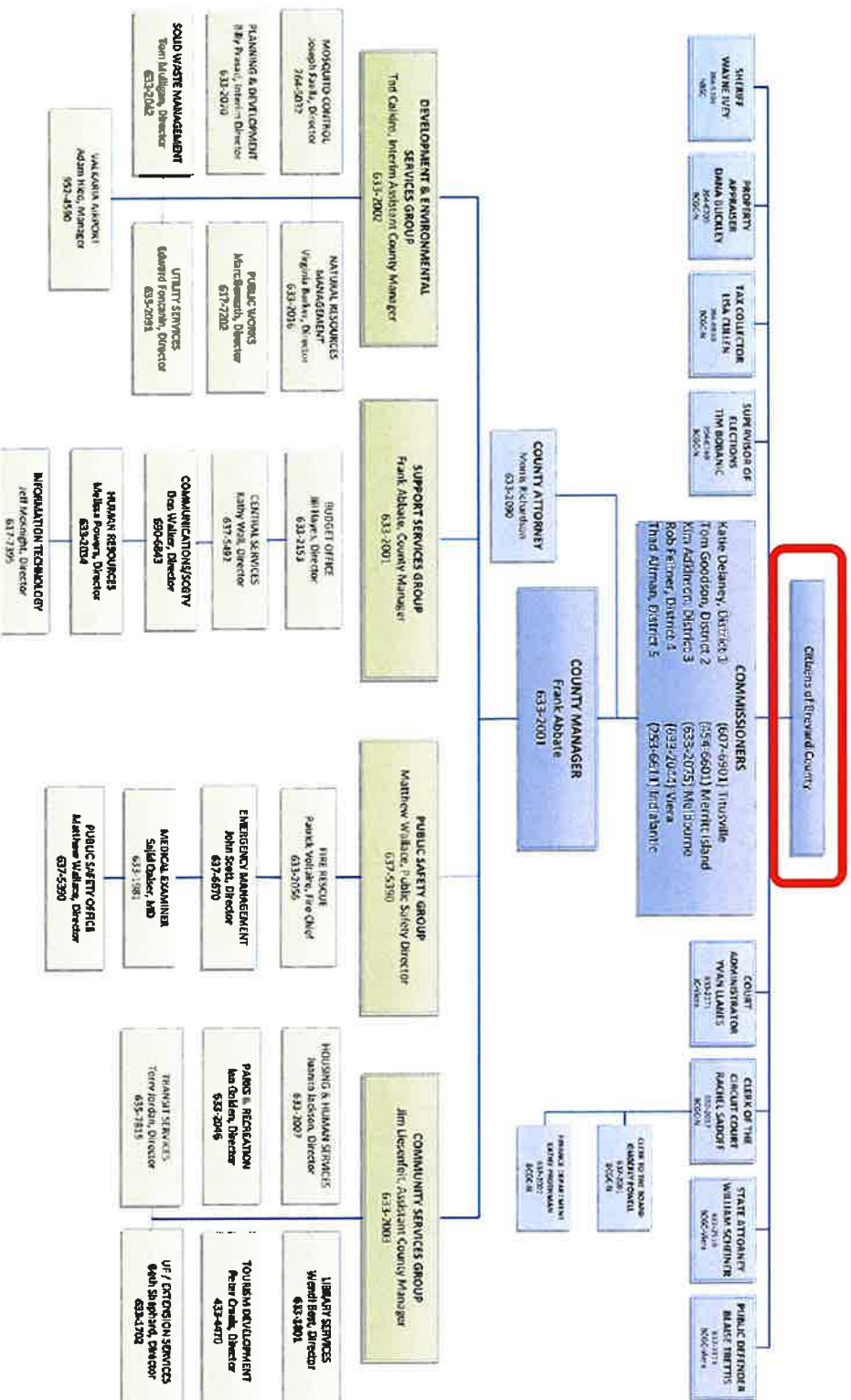
From 2013 To Present (NBEDZ Established in 2013)

Total Payments Across County: \$108,615,209
North Brevard Payments: \$33,617,837
All Other District Payments Combined: **\$73,789,450**

County CRA Funding - by District without NBEDZ

<u>District Map</u>	<u>Community Redevelopment Agencies</u>	<u>FY 2025 Payment</u>	<u>Total District Payment</u>
District 1	City of Titusville Downtown Area	\$ 350,722	\$ 350,722
District 2	City of Cocoa-Diamond Square	\$ 122,949	\$ 5,271,068
	City of Cape Canaveral	\$ 1,359,611	
	City of Cocoa Beach	\$ 493,222	
	City of Rockledge	\$ 1,219,560	
	City of Cocoa-Downtown Unit 1	\$ 546,730	
Districts 3 and 5	Merritt Island Redevelopment Agency	\$ 1,255,951	\$ 1,701,543
	Merritt Island Redevelopment SeaRay Bridge	\$ 273,045	
	City of Melbourne Eau Gallie	\$ 326,279	
	Brevard/West Melbourne Joint CRA	\$ 638,520	
	City of Melbourne Downtown Unit 1 K1	\$ 736,744	

<u>CRA Funding By District</u>			
District 1	\$	350,722	5%
District 2	\$	5,271,068	72%
District 3 & 5	\$	1,701,543	23%





District 1 Board Report

April 8th, 2025

District 1 Report

- D1 Parks Tour – North Area Parks
 - Happy To Report that Herbicides are not used in D1 park ponds!
- Cocoa Community Meetings (Councilwoman Koss and City Pointe)
- Farm Tours – Kemfir (South) and Farmton (North)
- Healthcare Stakeholder Mtgs- Rockledge Regional Closing (SCHF)
- Canvassing Board Meeting on Special Primary Election Night





ER & ACSC Update

At the Nov.7, 2024 zoning meeting, my predecessor stated,

“There will be new Commissioners here and they might want to

do a workshop and figure out what to do with the input and

what they want to do moving forward”.

Let's do a workshop!

Orlando Health-Rockledge Regional Hospital

Received Concerns From These Groups:

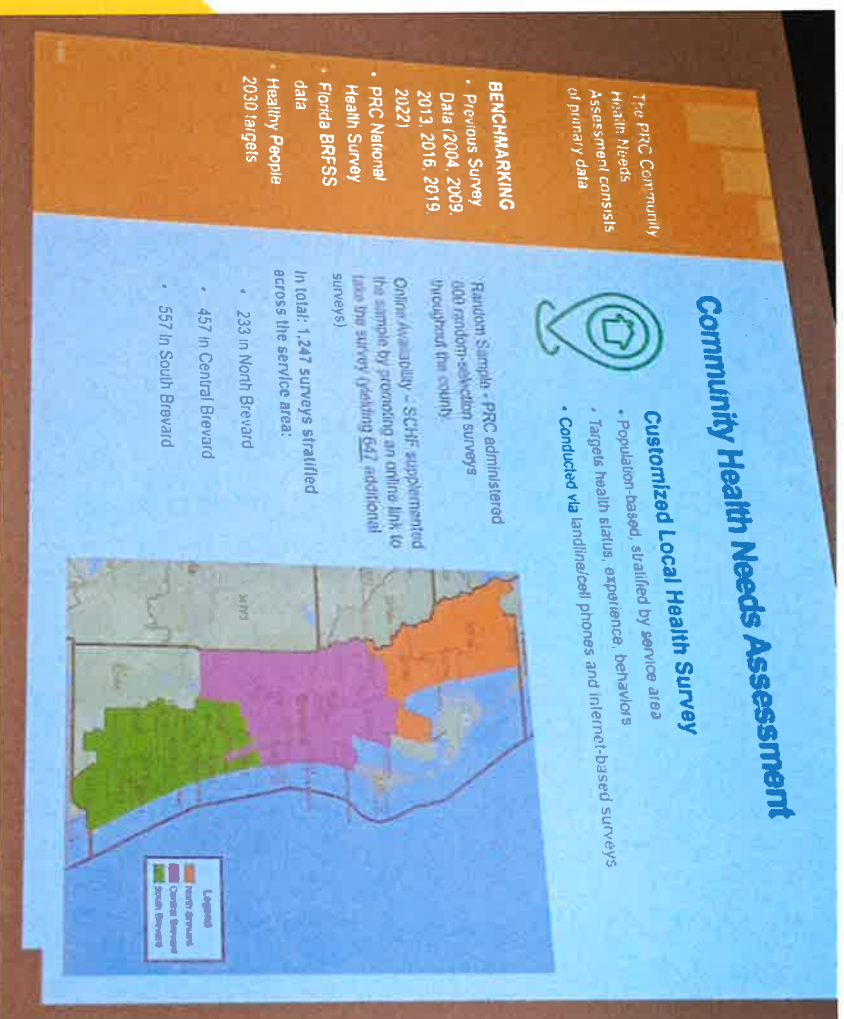
- Citizens
- BCFR
- Health First
- Parrish Medical Center
- Rockledge Hospital Doctors and Nurses

Fire Rescue-Coastal

- Concerns over Level of Service
- Could we instead hire single cert. paramedics per diem?
- What is the cost to residents to use Coastal services?
- Will unincorporated residents get a bill from Coastal if they are dispatched? If so, is that double taxation? If not, how is Coastal being paid for that service?



2024 Brevard County Community Needs Assessment



Survey Methodology

2024 City of Titusville Community Survey



Methods

Selecting survey recipients

All households within the City of Titusville were eligible to participate in the survey. A list of all households within the city was obtained from the City of Titusville's Department of Public Works. The list was then filtered to include only those households that were within the City of Titusville's jurisdiction. The list was then filtered to include only those households that were within the City of Titusville's jurisdiction. The list was then filtered to include only those households that were within the City of Titusville's jurisdiction.

The survey was conducted using a random digit dialing method. The survey was conducted using a random digit dialing method. The survey was conducted using a random digit dialing method. The survey was conducted using a random digit dialing method. The survey was conducted using a random digit dialing method.

Conducting the survey

The 2024 survey was conducted using a random digit dialing method. The survey was conducted using a random digit dialing method. The survey was conducted using a random digit dialing method. The survey was conducted using a random digit dialing method. The survey was conducted using a random digit dialing method.

The survey was conducted using a random digit dialing method. The survey was conducted using a random digit dialing method. The survey was conducted using a random digit dialing method. The survey was conducted using a random digit dialing method. The survey was conducted using a random digit dialing method.

Analyzing the data

The survey data was analyzed using a combination of statistical software and manual review. The survey data was analyzed using a combination of statistical software and manual review. The survey data was analyzed using a combination of statistical software and manual review. The survey data was analyzed using a combination of statistical software and manual review.

The survey data was analyzed using a combination of statistical software and manual review. The survey data was analyzed using a combination of statistical software and manual review. The survey data was analyzed using a combination of statistical software and manual review. The survey data was analyzed using a combination of statistical software and manual review.

Age	Unweighted	Weighted	Target
18-24	15%	20%	25%
25-34	18%	22%	28%
35-44	22%	25%	32%
45-54	25%	28%	35%
55-64	28%	32%	38%
65+	32%	35%	42%
Gender			
Male	50%	50%	50%
Female	50%	50%	50%
Race			
White	75%	75%	75%
Black	15%	15%	15%
Hispanic	10%	10%	10%
Other	0%	0%	0%

The survey data was analyzed using a combination of statistical software and manual review. The survey data was analyzed using a combination of statistical software and manual review. The survey data was analyzed using a combination of statistical software and manual review. The survey data was analyzed using a combination of statistical software and manual review.

The survey data was analyzed using a combination of statistical software and manual review. The survey data was analyzed using a combination of statistical software and manual review. The survey data was analyzed using a combination of statistical software and manual review. The survey data was analyzed using a combination of statistical software and manual review.

The survey data was analyzed using a combination of statistical software and manual review. The survey data was analyzed using a combination of statistical software and manual review. The survey data was analyzed using a combination of statistical software and manual review. The survey data was analyzed using a combination of statistical software and manual review.

The survey data was analyzed using a combination of statistical software and manual review. The survey data was analyzed using a combination of statistical software and manual review. The survey data was analyzed using a combination of statistical software and manual review. The survey data was analyzed using a combination of statistical software and manual review.