

D. Christina T.
Least Terns are listed by the State of Florida as Threatened. Least Terns winter in Central and South American and return to the US in the Spring to breed. At one time, Florida had many colonies of breeding Least Terns, but, due to extensive development along the coasts, there are only limited beaches still suitable for Least Tern breeding.

As a result of the loss of their beach breeding grounds, many Least Terns began using the flat roofs of commercial buildings. But only those buildings with gravel roofs are used for breeding. Unfortunately, most of those gravel roofs have been re-roofed with newer materials, materials not suitable for the breeding terns.

But, there is a possible solution that is both easy and cost effective. Many large cities, such as New York and Atlanta, offer tax incentives to building owners who install or convert their roofs to Living Roofs (AKA Green Roofs). Living Roofs are engineered to allow the placement of a soil layer and the planting of grasses, flowers, shrubs, and even small trees. Living Roofs have many benefits. They reduce runoff, reduce HVAC costs, and increase the lifespan of the roof by up to 100%. In addition, their aesthetic value cannot be underestimated. Many high-rise dwelling buildings list their rooftop garden as an important amenity.

However, to improve the chances of breeding success for our Least Terns would only require a much smaller investment. A thin layer of sand and gravel is all these birds need. The building owners would not have to install soil, irrigation systems, plants, or special leak detection systems, and only minor annual maintenance would be necessary. The cost to the property owners would be minimal compared to the cost for a standard Green Roof.

In order to convince property owners to make the changes needed, the County should consider offering a monetary incentive such as a real estate tax credit. Additionally, I think providing some type of recognition, such as a plaque certifying the roof is helping endangered birds, would be beneficial. Many businesses like to let the general public know that they are trying to be good environmental stewards. The Starbucks in Downtown Disney has a Green Roof because Starbucks appreciates the goodwill this engenders.

Brevard County has dozens of volunteers who spend hundreds of hours every year trying to help Least Terns successfully raise their young. Please consider helping us help them.

Thank you.



D. Michael MjjaK

Building Brevard's Future With Quality of Life

A Task Force on Space

Department Affected (If Known):

County Commission

*Describe the current problem, issue, or concern: **

Brevard is blessed. We have a celebrated environment with beaches, our Lagoon and wetlands; a thriving business community; strong educational institutions; nationally recognized tourism resources; and more-the world's leading Space Port.

Where many communities boast "quad-modal" transportation infrastructure systems (aviation, rail, road, and sea) to support and drive their growth, Brevard may be the only "penta-modal" community that is adding Space to its other drivers. This unique opportunity is the result both of its choice location for the launching of rockets and the leadership of our County Commission, Economic Development Commission, Space Florida, and others over the past decades.

Today the accelerating growth of commercial Space, and other issues, are driving changes through much of our community:

- ➔ Thousands of acres of new manufacturing and support facilities both within the Space Port, Port Canaveral, SunRail and beyond.
- ➔ Additionally tens of thousands of new jobs (government *and* private) will be coming online for Space related activities; They'll need housing, roads, libraries, other growth issues.
- ➔ Construction of new wastewater facilities or ground water resource facilities to support the needs of additional growth, including meeting new septic conversion requirements
- ➔ Need for provisions to manage anticipated sea-level rise.
- ➔ Adapt Port Canaveral to accommodate future Space industry, tourism, and commercial activities in harmony with maintaining our quality of life.
- ➔ Replacement and Expansion of our roads and bridges to support Space and other growth.
- ➔ Expansion of our local airports and improved rail access.
- ➔ Additions to our educational and tourism resources will similarly be required.
- ➔ And much more.

The following is a draft list of organizations to be included in this effort:

Key Participants for County-Related “Penta-Modal” Growth Assessment Task Force

Brevard County Commission
NASA/KSC
DOD/Space Force/CCSFS
Space Florida
Space Coast Economic Development Council
Canaveral Port Authority
US Army Corps of Engineers
Brevard County Natural Resources Management Office
Titusville-Cocoa Airport Authority
Brevard County Environmentally Endangered Lands Program
IRL National Estuary Program/ Indian River Lagoon Council
Titusville/Cocoa Municipal Representatives
USFWS/Merritt Island National Wildlife Refuge workers
National Park Service/Canaveral National Seashore
FAA/COMSTAC
US Coast Guard – Canaveral MSD
US Department of Commerce
NOAA/National Marine Fisheries Service
Brevard County Tourist Development Council
Florida Dept. of Environmental Protection
Florida Dept. of Transportation
St. Johns River Water Management District
Indian River Lagoon Roundtable
Marine Resources Council of East Florida
Space Coast Audubon Society
Brevard Indian River Lagoon Coalition

D.
M. Myjak

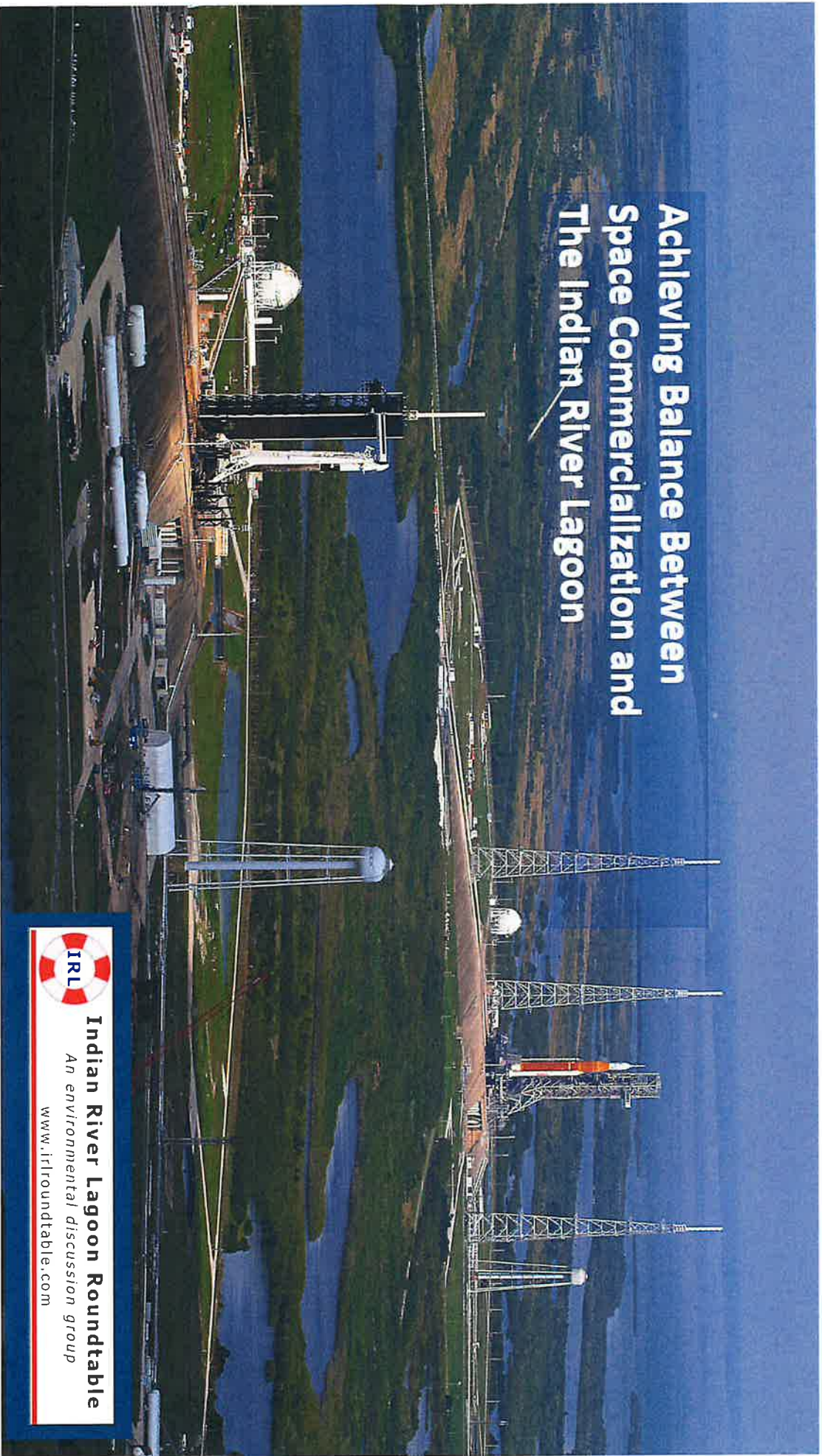
Achieving Balance Between Space Commercialization and The Indian River Lagoon



Indian River Lagoon Roundtable

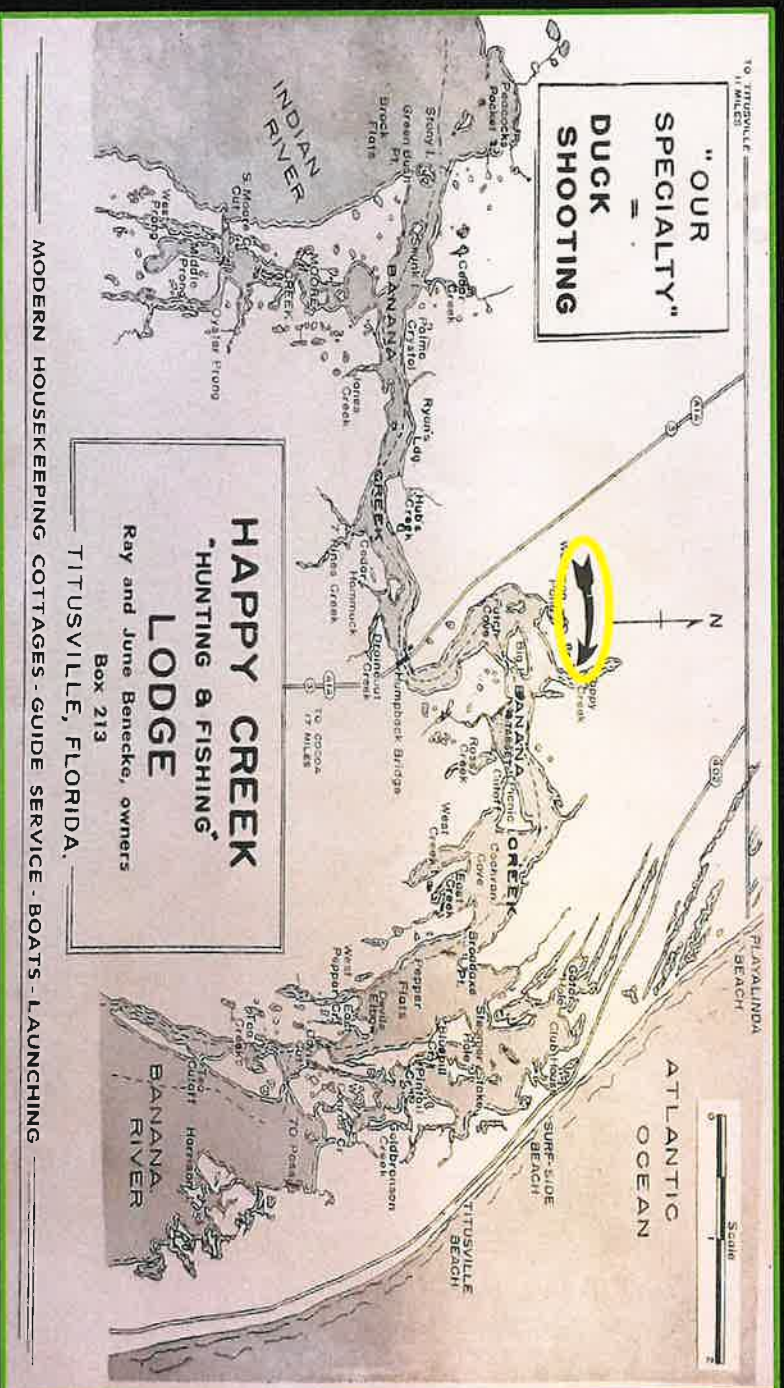
An environmental discussion group

www.irroundtable.com





Titusville Fishing Pier Circa 1960



Banana Creek Mid 1950s





Brown
Shrimp



White Shrimp



Hopper



Pink
Shrimp



Redfish



Tarpon



Snoek



Spotted Sea Trout



Pompano



Sheepshead



Black Drum



Flounder









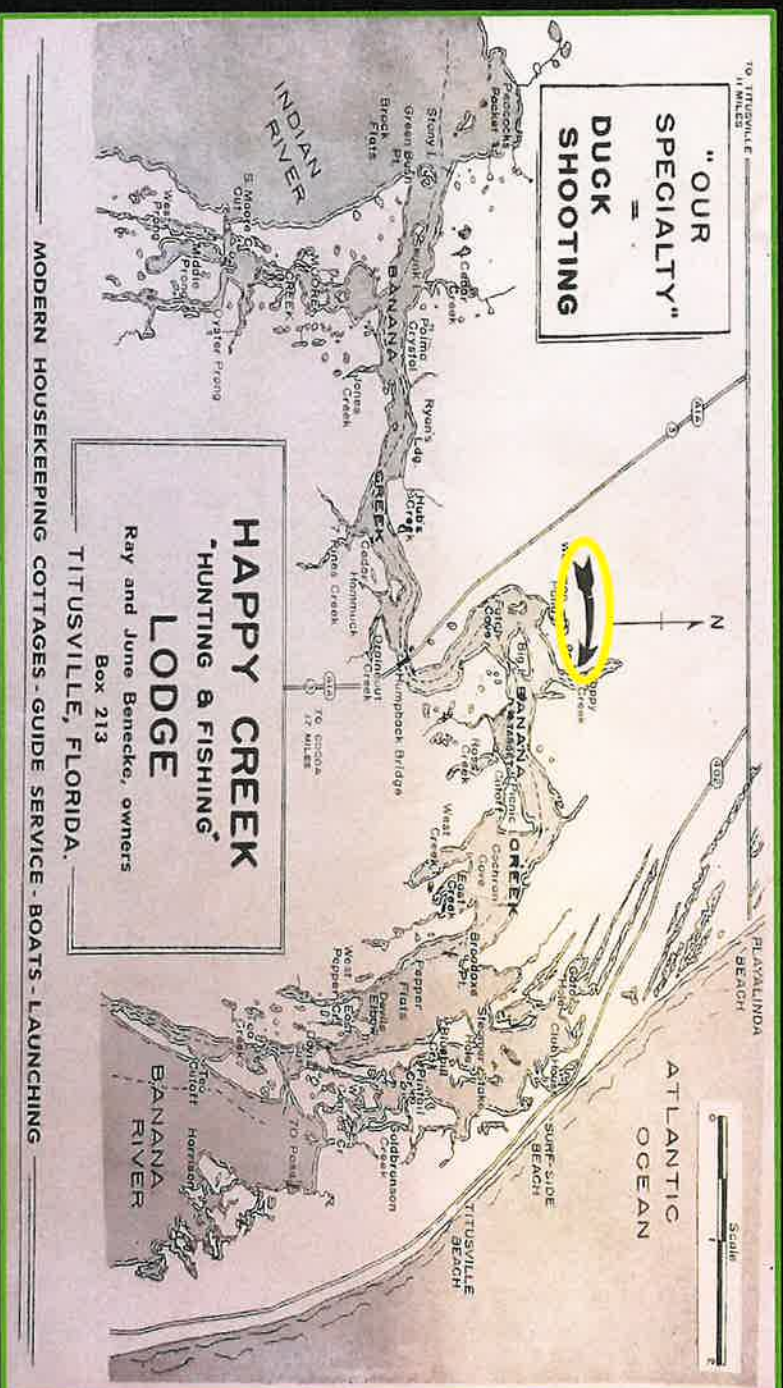




Jason
Gulley







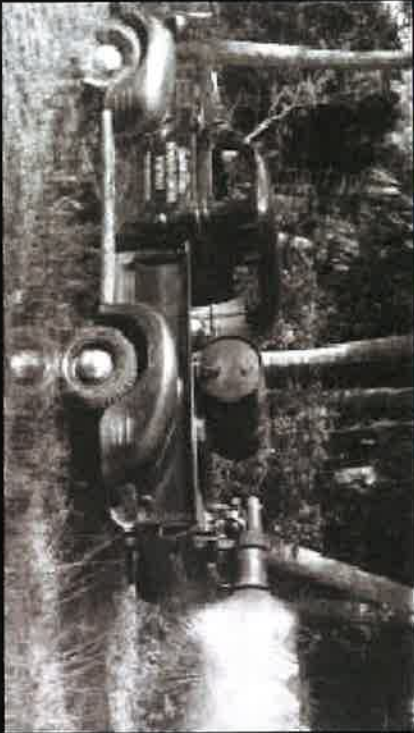
Banana Creek Mid 1950s



Apollo Launch Vehicle Traveling Along the Crawlerway



Apollo Launch Vehicle at LC 39-A







Banana Creek Today

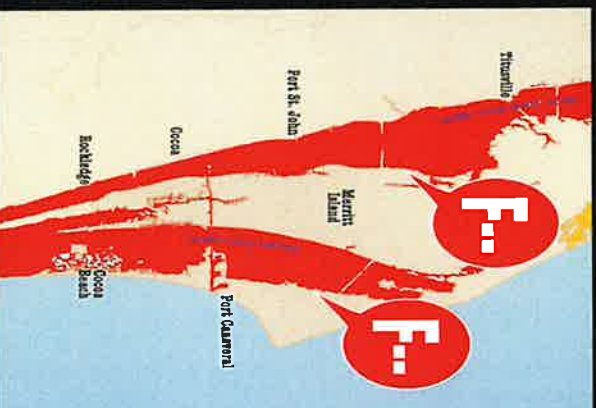




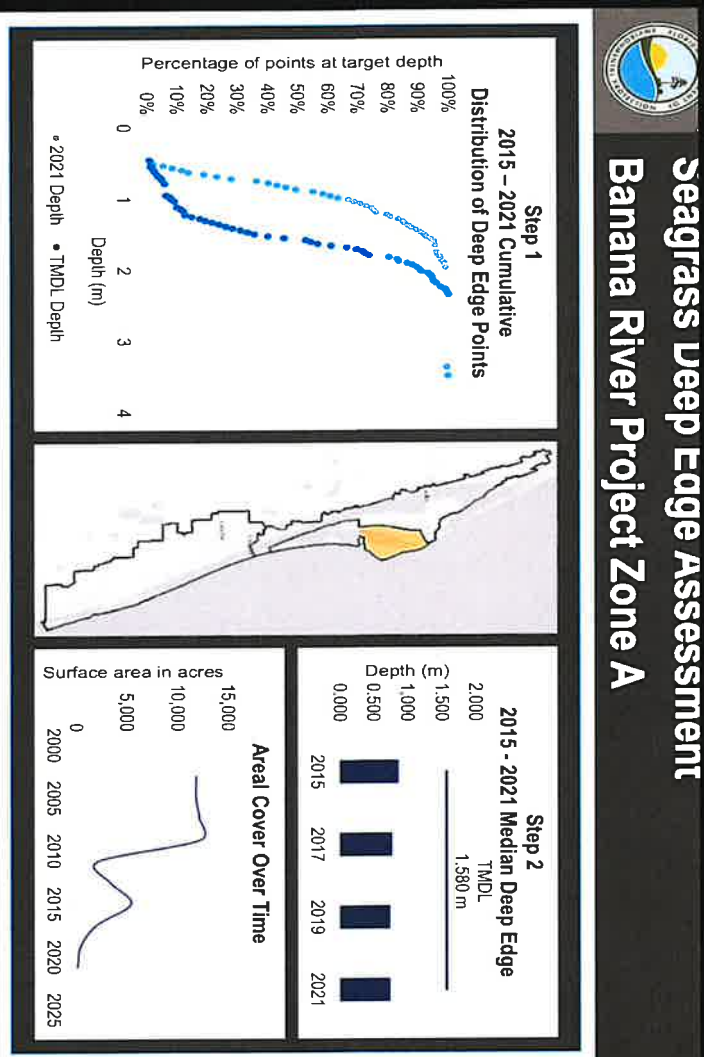
March 20, 2016 Banana River Lagoon Fish Kill

Photo by Captain Alex Gorchky, Local Lines Charters

Seagrass Deep Edge Assessment Banana River Project Zone A



Marine Resources Council
2022 IRL Report Card:
Health Scores for Banana
River and North IRL: F -











Task Force - Space

- BoCC – unique Brevard leadership
- Call into Existence / Form the Space Task Force
- And Join the Forces Together:
 - NASA/KSC & the Department of Transportation
 - DoD; US Space Force, US Coast Guard
 - Space Florida, Canaveral Port Authority
 - IRL NEP, National Park Service, Brevard EELS
 - FAA & COMSTAC & Permitting Authorities and on...



Task Force - Space

- NASA/KSC
- DOD/Space Force/CCSFS
- Space Florida
- Space Coast Economic Development Council
- Canaveral Port Authority
- US Army Corps of Engineers
- Brevard County Natural Resources Management Office
- Titusville-Cocoa Airport Authority
- Brevard County Environmentally Endangered Lands
- IRL National Estuary Program
- Indian River Lagoon Council
- Titusville/Cocoa Municipal Representatives
- USFWS/Merritt Island National Wildlife Refuge
- National Park Service Canaveral National Seashore
- FAA/COMSTAC
- US Coast Guard – Canaveral MSDti
- US Department of Commerce
- NOAA
- National Marine Fisheries Service
- Brevard County Tourist Development Council
- Florida Dept. of Environmental Protection
- Florida Dept. of Transportation
- St. Johns River Water Management District
- Indian River Lagoon Roundtable
- Marine Resources Council of East Florida
- Space Coast Audubon Society
- Brevard Indian River Lagoon Coalition



Focus: *Accelerated Growth*

Accelerating growth of commercial Space is driving changes:

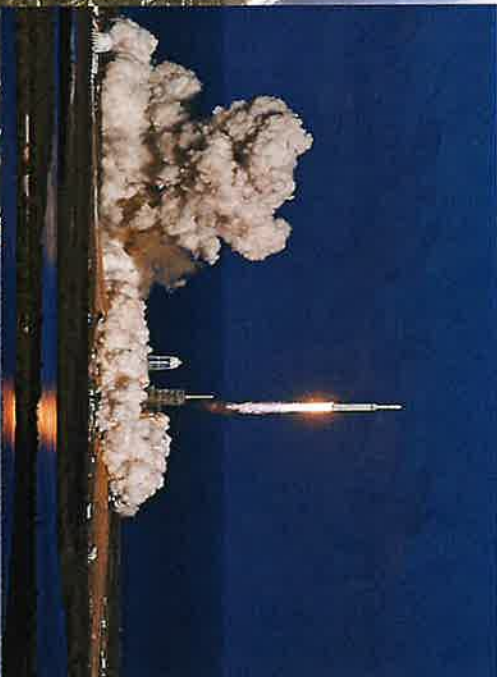
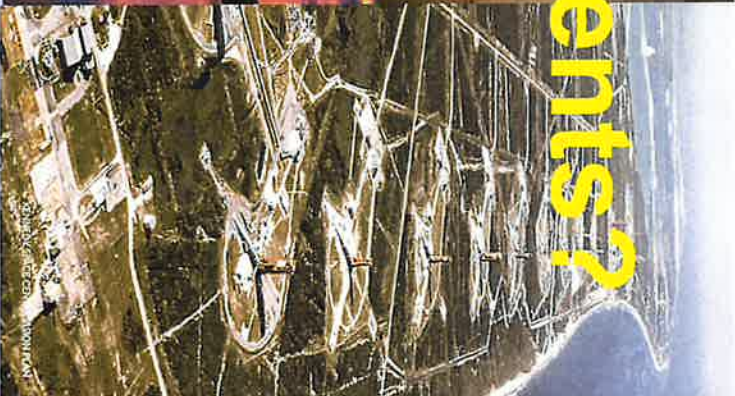
- 10k+ Addition workers w/ Housing Needs and Support Facilities.
- New Wastewater Facilities to Support Growth; New Septic Requirements.
- Adapt Port Canaveral to accommodate future Space industry growth
- In addition, Sustainably manage Anticipated Sea-Level Rise.
- Replace / Expand Roads, Bridges, Potable Water Supply, Education
- Expansion / Improved Access of local Airports, Commuter Rail, etc.
- Additional educational and tourism resources will be expended, too

I am Florida.
And I will vote anyone out
of office that threatens
the health of our natural
resources. Period.

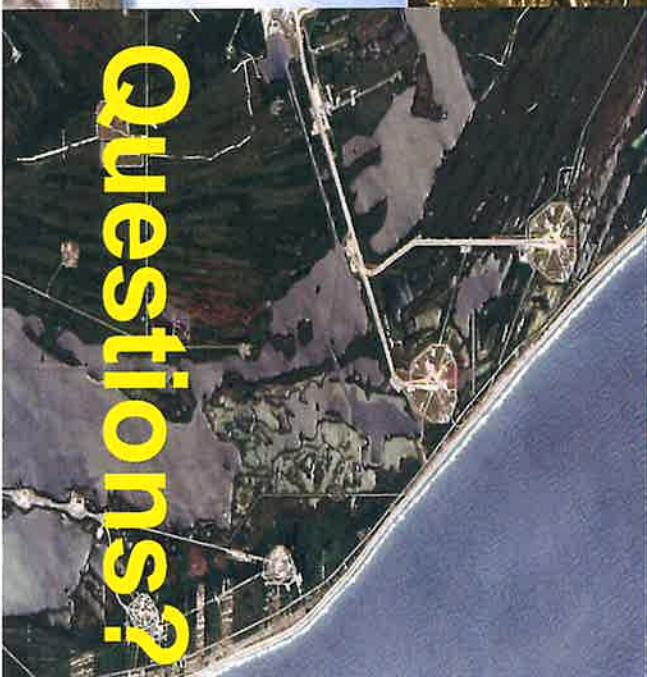




Comments?



Questions?





Roundtable

Join us on-line at:

irroundtable.com/forum/





Indian River Lagoon Roundtable

An environmental discussion group

www.irlroundtable.com
