



Budget Briefing

2014-15

Florida Statutes, Chapter 252



- Each county must have emergency management agency and a comprehensive emergency management plan consistent with State's
- Emergency management agency shall serve an entire county
- Each county must have Director of Emergency Management, appointed by BoCC or County Manager
- Emergency management agency coordinates for use of School Board resources during local state of emergency
- EMA must review all Health Care Facility plans within county
- Each county must provide a primary Emergency Operations Center and secondary centers as needed
- Each county must establish and maintain Special Needs Registry*
- Each county must coordinate sheltering of Special Needs clients with Health Department

Florida Statutes, Chapter 252



- County emergency management agencies serve as liaisons for municipalities' requests for State and Federal assistance.
- Counties must have CEMPs; cities may have.
- Counties provide for evacuations, shelters (including general population, special needs and pet-friendly), post-disaster recovery, alerting & warning, exercises.

Our Mission



- To provide Brevard County residents, businesses and industries, non-profit organizations, and local governments the **education and support** necessary to **reduce the loss of life and human suffering**;
- To **minimize property damage**; and
- To **protect environmentally sensitive areas** from all types of disasters through a comprehensive, risk-based, *all-hazard* emergency management program

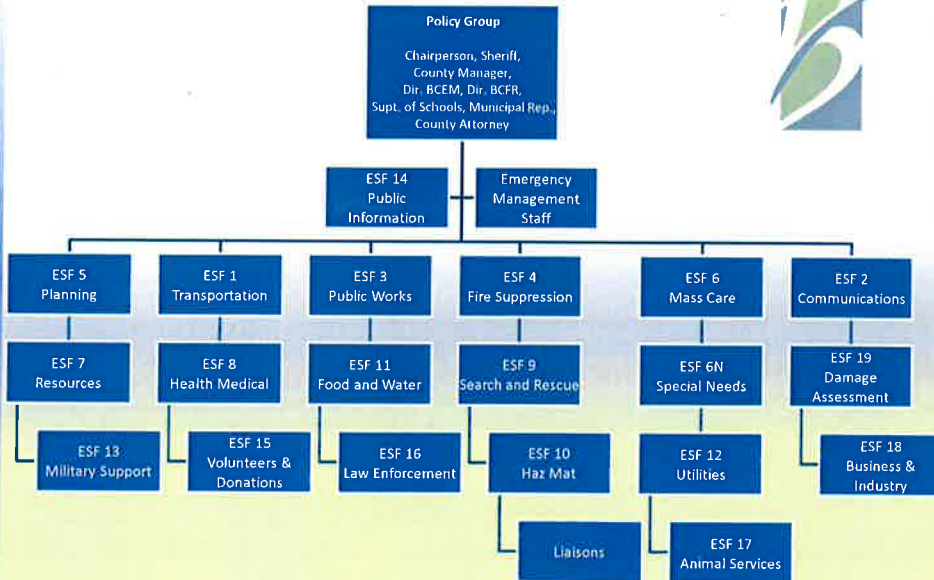
Organizational Structure

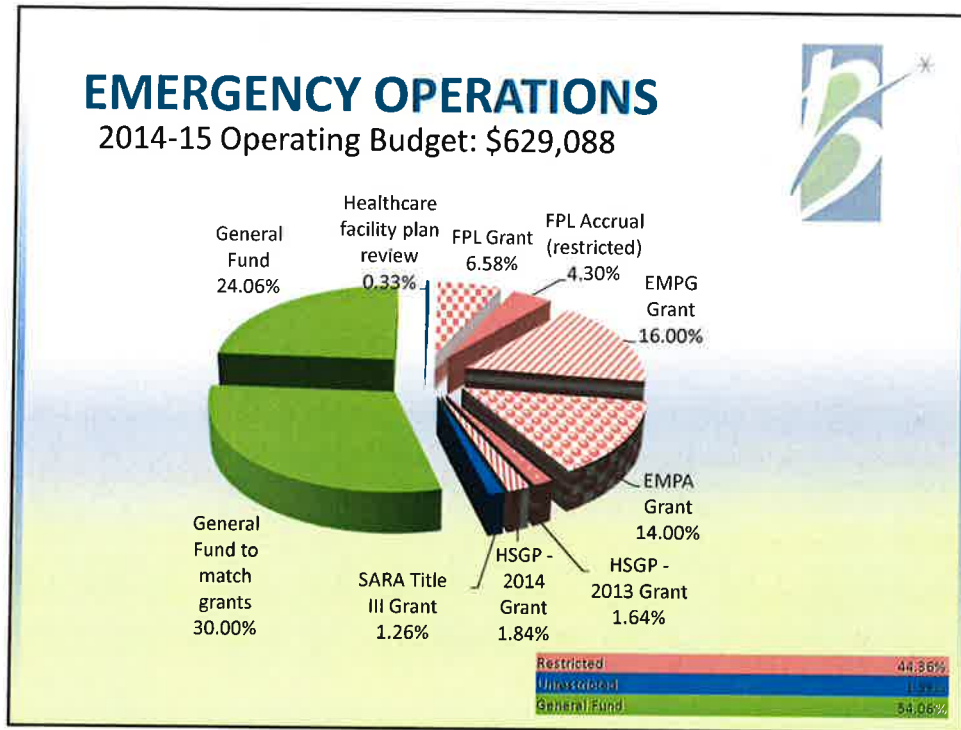


3 Divisions of Emergency Management:

- Emergency Operations
- 800 MHz Public Safety Radio System
- E-911 Administration & Address Assignment

Emergency Government





Emergency Operations

- Comprehensive Emergency Management Plan (CEMP)
- Threat and Hazard Identification & Risk Assessment (THIRA)
- Continuity of operations plans
- Information-sharing among all partners
- 4 phases of emergency management: preparation, response, recovery & mitigation
- Exercises and drills
- SARA Title III compliance



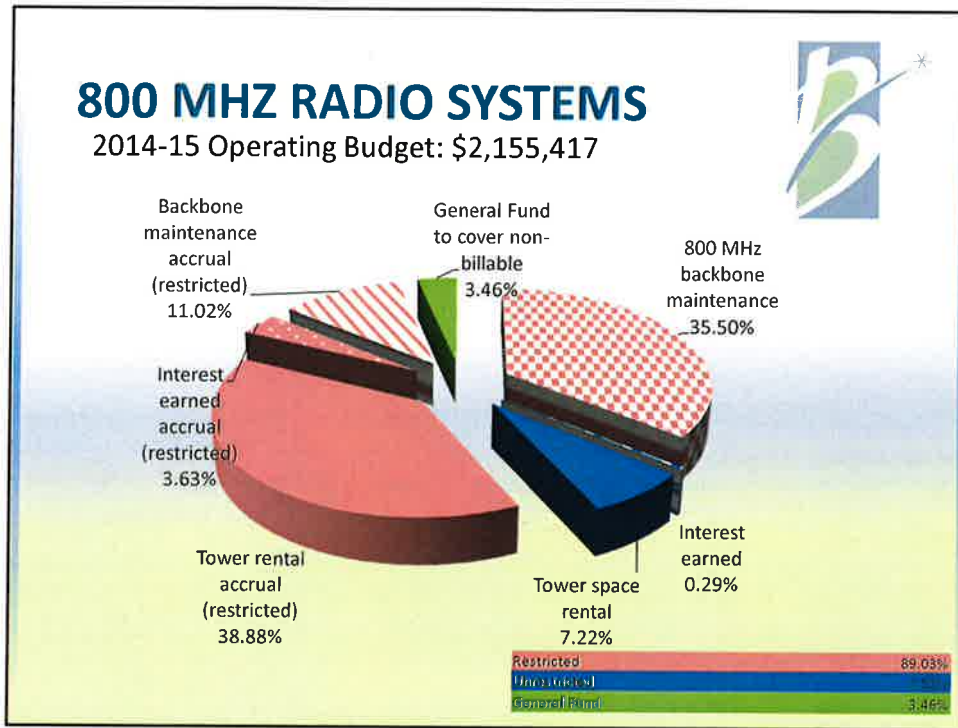
Emergency Operations

- Shelter coordination and mass care support
 - disaster, post-disaster, cold weather
- Emergency management training
- Brevard Operations Base (BOB) SharePoint system for information sharing in a disaster
- Alerting/warning
 - Emergency Alert System
 - FirstCall
 - social media
 - texting



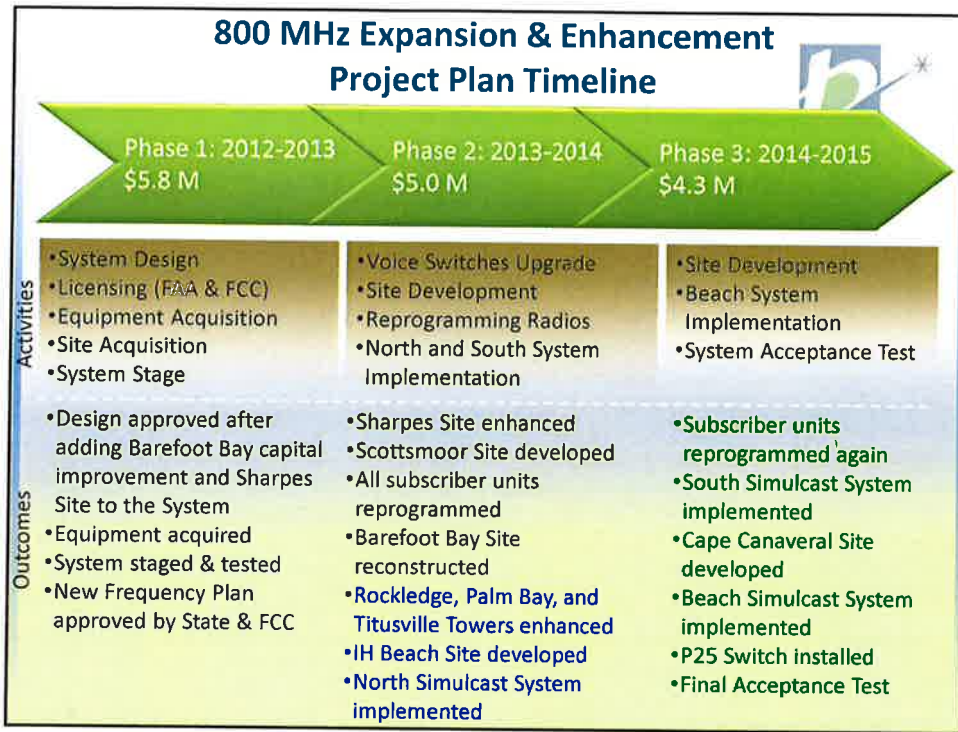
Emergency Operations

- St. Lucie Nuclear Power Plant
- Space launches with radiological sources
- Local Mitigation Strategy
- Health care facilities' emergency plan reviews
- Special Needs registry
- Special Needs
 - shelters
 - staff
 - supplies
 - transportation



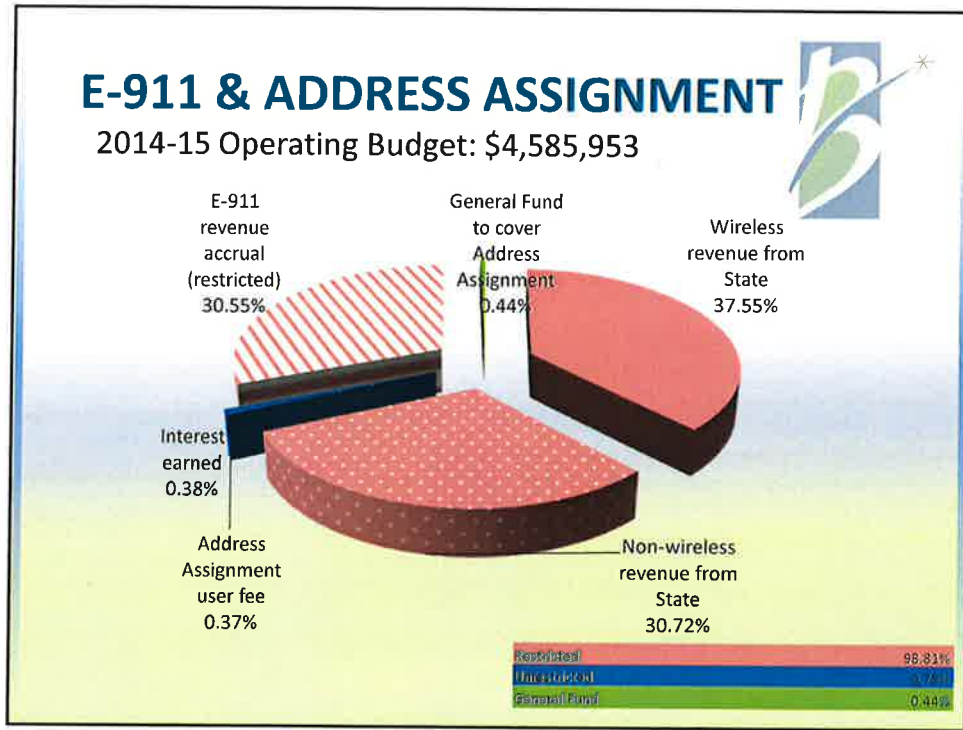
800 MHz Radio Systems

- Radio system used by all public safety agencies
- User agreements & accounts for 56 agencies
- Radio coverage expanding via new towers in Scottsmoor, Indian Harbour Beach, Cape Canaveral
- Obsolete equipment being replaced
- Digital system will improve capacity and capability
- Regional interoperability



800 MHz Radio System Before/After

	Before Enhancement	After Enhancement
Number of Towers	4	9
Digital Voice and Encryption at Dispatch Level and Countywide	No	Yes
Interference from other Counties	12 Channels (out of 44) with heavy interference, as those frequencies are used by adjacent counties.	New frequency plan implemented. Frequencies used by adjacent counties were re-licensed.
Traffic Load	Unbalanced load. Beach agencies take resources from the mainland towers.	Agencies will be working out of their geographical areas: North, Beach, and South.
Tower Standards and Building Codes	Towers and Sites were constructed between 1990 and 1998	Up-To-Date Codes
Radio Signal Coverage	Marginal and/or poor coverage in several areas throughout the county	Coverage at the North, South, Beach, and East-West corridor enhanced
Future Ready Platform	No	Yes (P25)



E-911 & Address Assignment

- Florida Statute 365, other state/federal rules
- Point of contact regarding E911 fiscal, technical, operational and strategic planning issues
- E911 system operational countywide
 - Basic, E911 wireline, E911 wireless, i3 platform
- Appropriate technology for eleven Public Safety Answering Points (PSAPs)
- E911 fund distribution



E-911 & Address Assignment

- E911 database accuracy
- Training for Public Safety Telecommunicators
- GIS & electronic mapping to PSAPs for accurate dispatching
- GIS & electronic mapping to EM for response/recovery coordination
- Assign addresses for new development or redevelopment: streets, subdivisions, etc.
- Ensure streets/addresses are not duplicated



Trends & Issues

- 800 MHz division will manage County's cell towers and leases
- E-911 division is taking on address assignment for several municipalities
- DHS resiliency assessment for local Defense Industrial Base sector = EM projects to improve national security

New EOC/Comm Center Needed



Current facility: 11,000 square feet
FEMA recommendation: 57,960 square feet
ADG spatial needs analysis: 61,943 square feet

New EOC/Comm Center Needed



- Most activated EOC in the state
 - 100+ activations in the past 5 years (2010-2014)
 - Activates for every space launch
- 2nd oldest EOC in Florida
- Brevard's EOC is one of few in the state without space for municipality representation.

Brevard's Unique Hazards



- No county in the state has more hazards than Brevard, and Brevard also has the largest number of “high” likelihood hazards
- Kennedy Space Center/CCAFS
- Patrick Air Force Base, Naval Ordnance Test Unit
- Port Canaveral (fastest-growing port in FL)
- Barefoot Bay (2nd largest manufactured home park in US)

Timing – 800 MHz upgrade



- Current upgrade/expansion of 800 MHz radio system to P25 compatible will be complete in 1 year.
- City communications centers will need to purchase new radio consoles (\$60K each).
- Cities considering co-location of their dispatchers with BCFR/BCSO – or contracting with BCFR/BCSO for those services – would likely prefer to make that decision prior to purchasing new radio consoles.

Timing – 911 Administration



- As more people eliminate landlines, and as (pre-paid or no-contract) cellular providers decline to charge a monthly 911 fee, revenues decrease.
- A major priority of the state's 911 grant program is consolidation of Public Safety Answering Points.
- 4 of the county's 11 PSAPs are located on barrier islands. Funds will not be available to replace them following a disaster.

Why is it important?



- Palo Alto task force report notes that when public-safety facilities **"decline into substandard or unsafe conditions, both those who use them and the community that depends on them are in jeopardy."**