



AGENDA REPORT
January 22, 2019

**Precinct Boundaries - Altered and Added (Chapter 101.001 (1) F.S.),
Supervisor of Elections**

SUBJECT:

Precinct Boundaries - Altered and Added
(Chapter 101.001 (1) F.S.)

DEPT/OFFICE:

County Manager

REQUESTED ACTION:

It is recommended that the Board approve the revised Precinct Boundaries due to Annexations by the City of Melbourne.

SUMMARY EXPLANATION and BACKGROUND:

Contact Judy Moran, Executive Assistant
Phone: 321-690-6833 / jmoran@votebrevard.com

ATTACHMENTS:

Description

- **Attachment A**



Tammy Rowe, Clerk to the Board, 400 South Street • P.O. Box 999, Titusville, Florida 32781-0999

Telephone: (321) 637-2001
Fax: (321) 264-6972
Tammy.Rowe@brevardclerk.us

January 23, 2019

Honorable Lori Scott
Brevard County Supervisor of Elections
2725 Judge Fran Jamieson Way
Viera, FL 32940

Dear Ms. Scott:

RE: Item F.8., Precinct Boundaries – Altered and Added (Chapter 101.001 (1) F.S.)

The Board of County Commissioners, in regular session on January 22, 2019, approved the revised precinct boundaries generated by Annexations by the City of Melbourne.

Your continued cooperation is greatly appreciated.

Sincerely yours,

BOARD OF COUNTY COMMISSIONERS
SCOTT ELLIS, CLERK

Tammy Rowe

Tammy Rowe, Deputy Clerk

/cmw

cc: County Manager

Meeting Date

01/22/2019



AGENDA

Section

CONSENT

Item
No.

AGENDA REPORT

BREVARD COUNTY BOARD OF COUNTY COMMISSIONERS

SUBJECT:	PRECINCT BOUNDARIES-ALTERED AND ADDED (CHAPTER 101.001 (1) F.S.)
DEPT/OFFICE:	LORI SCOTT, SUPERVISOR OF ELECTIONS

Requested Action:

RECOMMENDED THAT THE BOARD APPROVE THE REVISED PRECINCT BOUNDARIES DUE TO ANNEXATIONS BY THE CITY OF MELBOURNE

Summary Explanation & Background:

Contact: Judy Moran, Executive Assistant
Phone/e-mail: 321-690-6833/jmoran@VoteBrevard.com

Clerk to the Board Instructions:

Exhibits Attached: Attachment "A" & Maps

Contract /Agreement (If attached): Reviewed by County Attorney Yes ☐ No ☐ PR ☐

County Manager
Frank Abbate

Assistant County Manager
John Denninghoff

Department Director / Extension

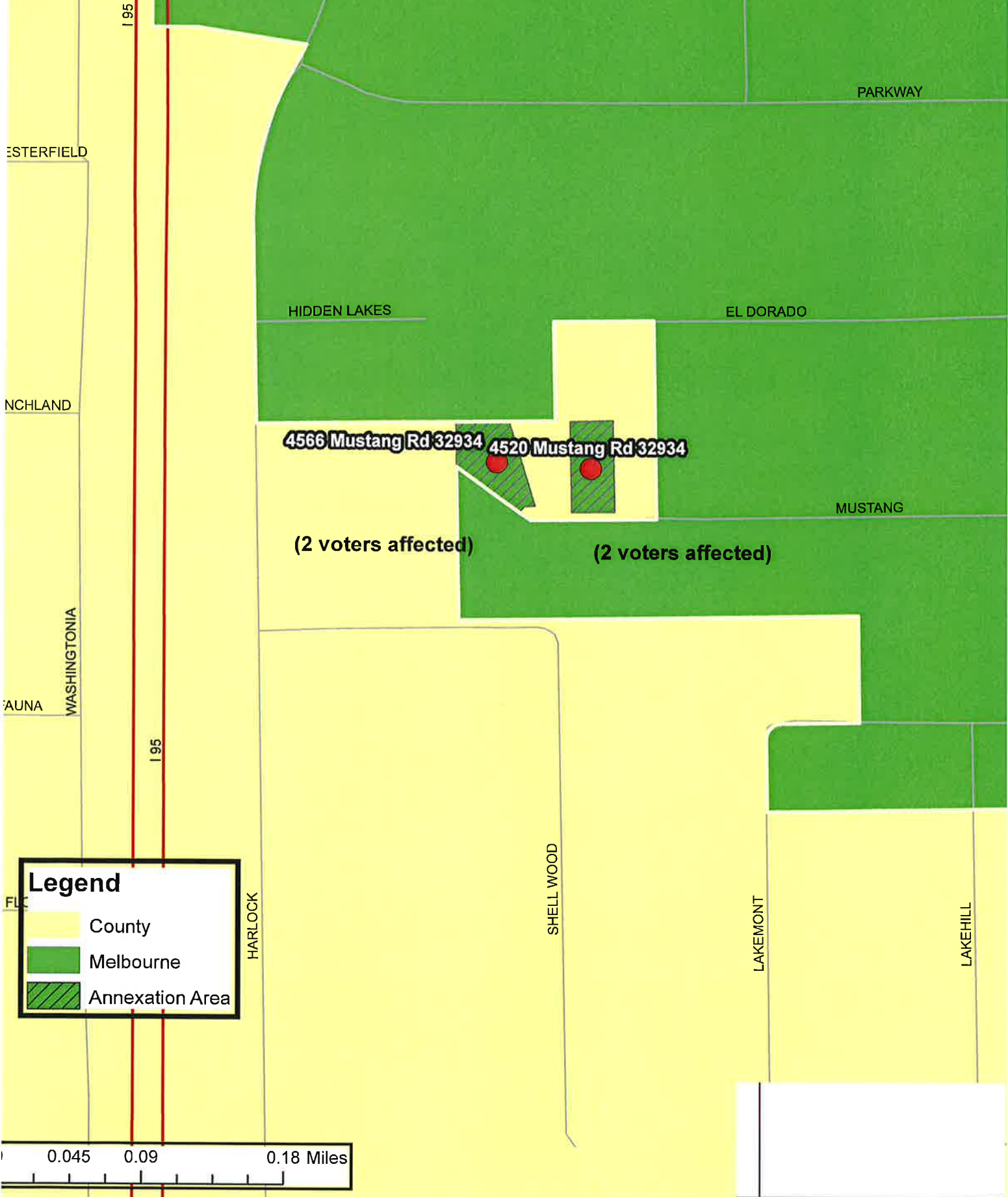
Interim Assistant County Manager
Jim Liesenfelt

ATTACHMENT "A"

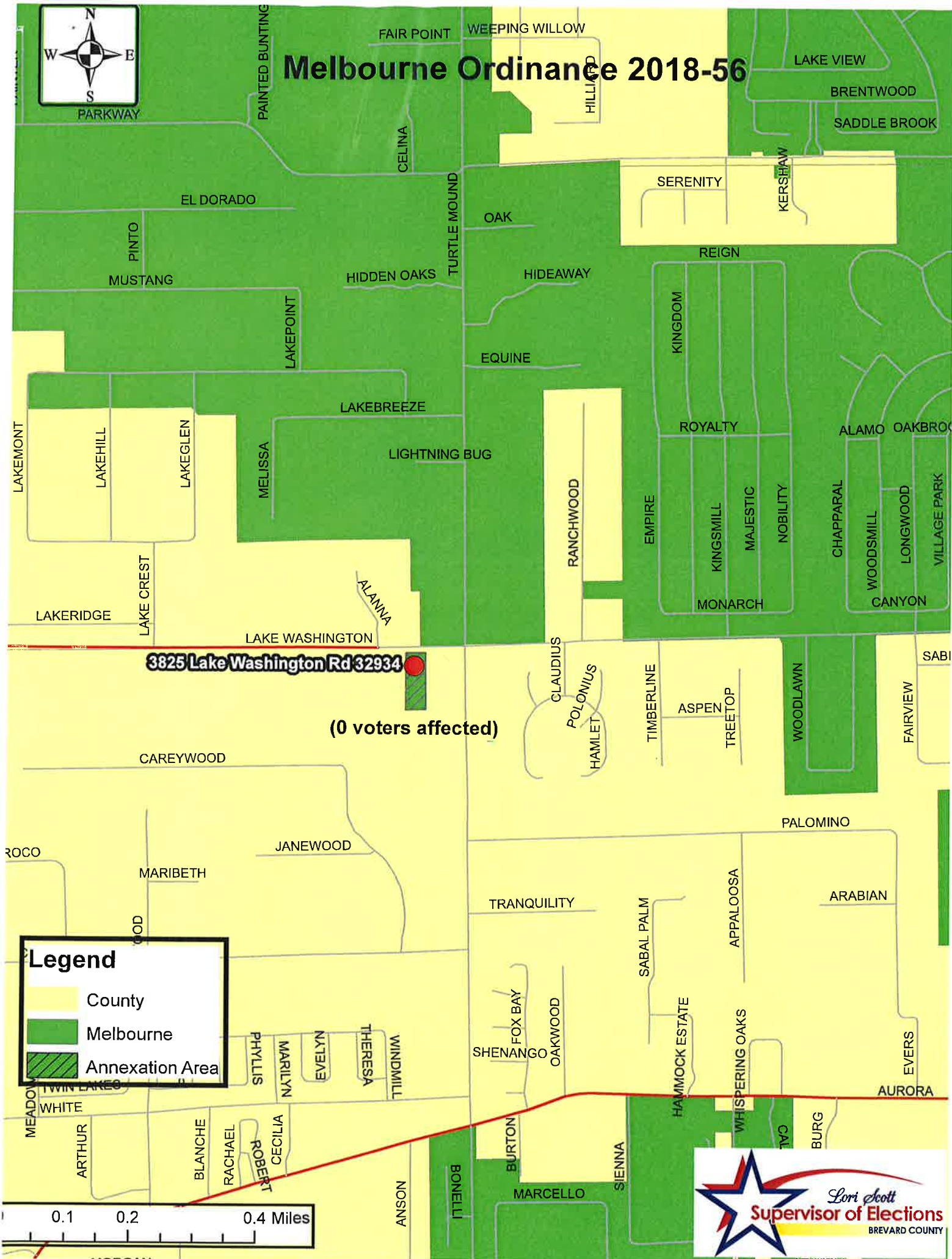
City	Ord #	Effective Date	Out of PCT	In to PCT	# Voters
Melbourne	2018-50	12/24/2018	426	422	2
Melbourne	2018-53	12/24/2018	426	422	2
Melbourne	2018-56	12/24/2018	511	518	0
Total Voters Affected					4
County Precincts Affected					2
City Precincts Affected					2



Melbourne Ordinances 2018-50 & 2018-53



Melbourne Ordinance 2018-56



Legend

- County
- Melbourne
- Annexation Area

0.1 0.2 0.4 Miles

