

Meeting Date  
**March 17, 2015**



AGENDA	
Section	Consent
Item No.	<b>II.A.5</b>

**AGENDA REPORT**  
 BREVARD COUNTY BOARD OF COUNTY COMMISSIONERS

SUBJECT:	Approval Re: Traffic Control Light at the Intersection of Wickham Road at Forest Lake Avenue/Golden Eagle Court – District 4
DEPT/OFFICE:	Public Works Department – Finance & Contracts Administration

Requested Action:

It is requested that the Board of County Commissioners: 1) Consider the Kelly, Collins & Gentry, Inc. Wickham Road at Forest Lake Signalization Report recommendation; 2) Direct staff to proceed with design and construction of the project estimated at \$507,000, construction engineering and inspection services estimated at \$15,500, and geotechnical services, testing, and utility clearances estimated at \$12,000; 3) Grant permission to bid the construction of the intersection signalization and associated improvements; 4) Award the construction bid to the lowest responsible and qualified bidder; and 5) Authorize the Chairman to execute the construction contracts.

Summary Explanation & Background:

On July 8, 2014, the Board of County Commissioners approved funding of the study and first phase of design for a traffic control light at the intersection of Wickham Road at Forest Lake Avenue/Golden Eagle Court. Subsequently, a notice to proceed was issued to Kelly, Collins & Gentry, Inc. (KCG) for Phase I – Feasibility Study Work Order. KCG has completed a Signalization Report and coordinated with County Traffic Engineering staff and County survey staff to assess right-of-way and utility relocation requirements and incorporate a pedestrian crosswalk.

As stated in the Executive Summary of the Signalization Report, a signal is warranted at this time, due to the traffic count information, field observation and the warrant analysis. The consultant evaluated the four viable signalization configurations at this intersection. The results indicate that two of the four study alternatives are feasible for the County to construct. One of those alternatives uses a diagonal span wire arrangement which FDOT no longer installs. The recommendation of the consultant is that the County should signalize the intersection using the single arm, four pole perpendicular mast arm assembly approach.

The anticipated engineer's probable cost estimate for this signalization is approximately \$507,000 for design and construction, \$15,500 for CEI and VT lab testing, and \$12,000 for geotechnical services, testing, and utility clearances (the total pre-design cost estimate is \$534,500). All improvements associated with this intersection can be constructed within the existing right-of-way. The utility relocation effort is limited to the relocation of a single 2" PVC irrigation line and a minor overhead electric service line. The intersection configuration also includes the addition of a north-south pedestrian crosswalk.

On October 21, 2014, the Board allocated Local Option Gas tax for Signalization Improvements for Forest Lake & Wickham Road and Viera Blvd. in the amount of \$1,600,985.

**Fiscal Impact: FY 2014/2015/2016 Funding is available in 1163/265160/5650000**  
 Clerk to the Board Instructions: Forward Board action to Department

Exhibits Attached: Wickham Road at Forest Lake Signalization Report Executive Summary

Contract /Agreement (If attached): Reviewed by County Attorney Yes  No  PR

County Manager

Assistant County Manager, Mel Scott

Department Director / Extension

Stockton Whitten

Assistant County Manager, Venetta Valdengo

*John P. Denninghoff*  
 John P. Denninghoff 67202



Tammy Etheridge, Clerk to the Board, 400 South Street • P.O. Box 999, Titusville, Florida 32781-0999

Telephone: (321) 637-2001  
Fax: (321) 264-6972

March 18, 2015

MEMORANDUM

TO: John Denninghoff, Public Works Director

RE: Item II.A.5, Traffic Control Light at the Intersection of Wickham Road and Forrest Lake Avenue/Golden Eagle Court

The Board of County Commissioners, in regular session on March 17, 2015, considered Kelly, Collins, and Gentry, Inc., Wickham Road at Forrest Lake Signalization Report Recommendation; directed staff to proceed with design and construction of the project estimated at \$507,000, cost for the construction engineering and inspection services testing estimated at \$15,500, and geotechnical services, testing, and utility clearances estimated at \$12,000; granted permission to bid the construction of the intersection signalization and associated improvements; awarded construction bid to the lowest responsible and qualified bidder; and authorized the Chairman to execute the construction contracts.

Your continued cooperation is greatly appreciated.

Sincerely yours,

BOARD OF COUNTY COMMISSIONERS  
SCOTT ELLIS, CLERK

*Tammy Etheridge*

Tammy Etheridge, Deputy Clerk

/cm



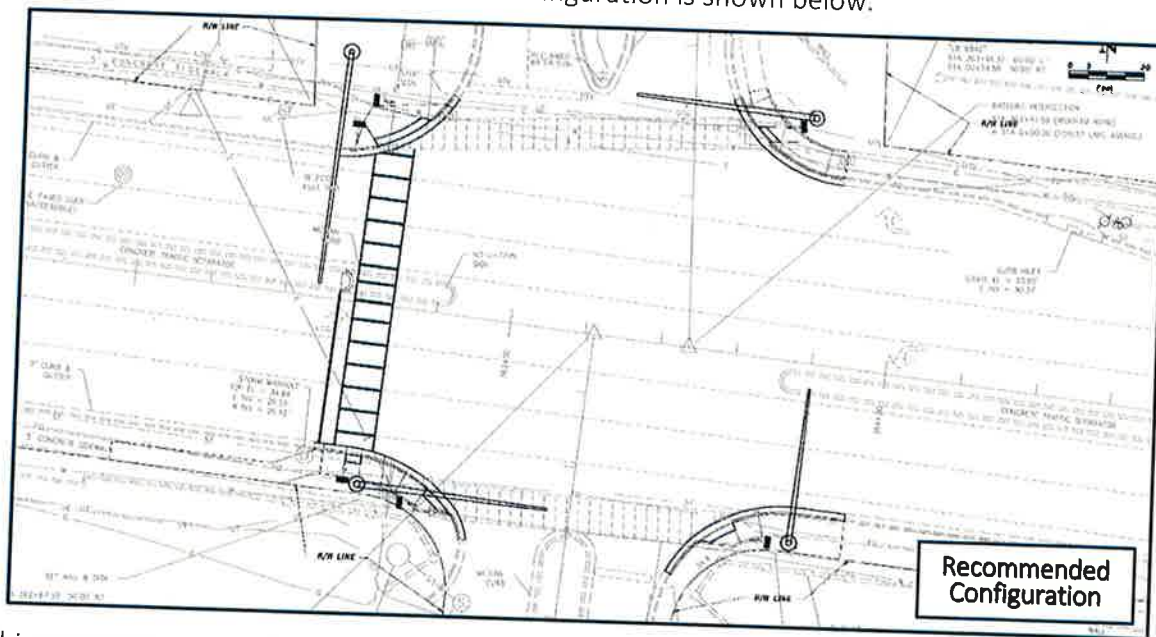
## Wickham Road at Forest Lake Signalization Report

### Signalization Report

#### Executive Summary

In accordance with our proposal dated September 10, 2014, Kelly Collins & Gentry, Inc. (KCG) has prepared this Signalization Report to determine the feasibility of constructing a new signal at the intersection of Wickham Road at Forest Lake Avenue/Golden Eagle Court.

Our work enhanced and incorporated the Signal Warrant Evaluation which was performed previously for this intersection. Based on that evaluation, a signal is warranted at this time, due to the traffic count information, field observation and the warrant analysis. Accordingly, KCG analyzed four viable signalization configurations for this intersection location. The results of our analysis conclude that two of the four study alternatives are possible for the County to construct, however, one of those alternatives uses a diagonal span wire arrangement which FDOT no longer utilizes. It is therefore our recommendation that the County use the Conventional Four (4) Pole Mast Arm approach. The estimated design and construction cost for this signal is approximately \$507,000. The recommended mast arm configuration is shown below.



All improvements associated with this configuration can be constructed within the existing right of way. The utility relocation effort is limited to the relocation of a single 2" PVC irrigation line in the northwest quadrant and a minor overhead electric service line for an existing light pole in the southwest quadrant which will be removed with the proposed mast arm mounted luminaires.

The recommended mast arm configuration shown above reflects modifications required as a result of County review comments made on February 10, 2015 on the initial report submitted on January 29, 2015. As requested, the configuration includes the addition of a north - south high emphasis pedestrian crosswalk on the west leg of Wickham Road.





# CITY OF ROCKLEDGE

## CITY HALL

1600 Huntington Lane  
Rockledge, FL 32955  
Telephone: 321-690-3978  
Fax: 321-690-3987

## BUILDING DIVISION

1600 Huntington Lane  
Rockledge, FL 32955  
Telephone: 321-690-3984  
Fax: 321-690-6481

## FIRE & EMERGENCY SERVICES DEPT.

1800 Rockledge Blvd.  
Rockledge, FL 32955  
Telephone: 321-690-3968  
Fax: 321-634-3592

## POLICE DEPT.

123 Barton Boulevard  
Rockledge, FL 32955  
Telephone: 321-690-3988  
Fax: 321-690-3996

## PUBLIC WORKS DEPT.

1400 N. Garden Road  
Rockledge, FL 32955  
Telephone: 321-690-3961  
Fax: 321-690-3965

## WASTEWATER TREAT- MENT & WATER RECLAMATION DEPT.

1700 Jack Oates Blvd.  
Rockledge, FL 32955  
Telephone: 321-690-3975  
Fax: 321-690-3998

January 5, 2015

Honorable Jim Barfield  
Brevard County Commissioner, District 2  
2575 N. Courtenay Pkwy, Suite 200  
Merritt Island, FL 32953

Re: Pluckebaum Road

Dear Commissioner Barfield:

The City of Rockledge would like to rename Pluckebaum Road to Dr. Joe Lee Smith Drive. As you may be aware, Dr. Smith has been a Rockledge City Council member for over 30 years. Dr. Smith has been a Rockledge resident since 1968. In addition to being an active Rockledge resident, Dr. Smith is active in a variety of different organizations in Brevard County as well, the key one being that as he has been a leader at Eastern Florida State College (formerly Brevard Community College) since the 1970s.

I cannot think of a better way to honor Dr. Smith for his dedication to our community than to name this roadway after him. Will you join me in supporting the renaming of Pluckebaum Road as Dr. Joe Lee Smith Drive?

Sincerely,

CITY OF ROCKLEDGE

  
James P. McKnight  
City Manager

cc: Stockton Whitten, Brevard County Manager  
Wayne Ivey, Brevard County Sheriff  
John Titkanich, City Manager, City of Cocoa  
Regina Mahoney, Brevard County E911

CITY OF COCOA

BREVARD COUNTY

CITY OF ROCKLEDGE

BARRISH RD

B RANG RD

PLUCKEBALUM RD

S BURNETT RD

STOWE LN

JOHNSON BLVD

GUM ST

WOOD CIR

WESTERN AVE

BROCKINGTON CIR

CATALINA DR

BROPHY BLVD

TOMLIN DR

GRANT ST

LEFEVER ST

COX ST

2005

2205

2355

2235

2100

2250

2955

195 HWY

195 HWY

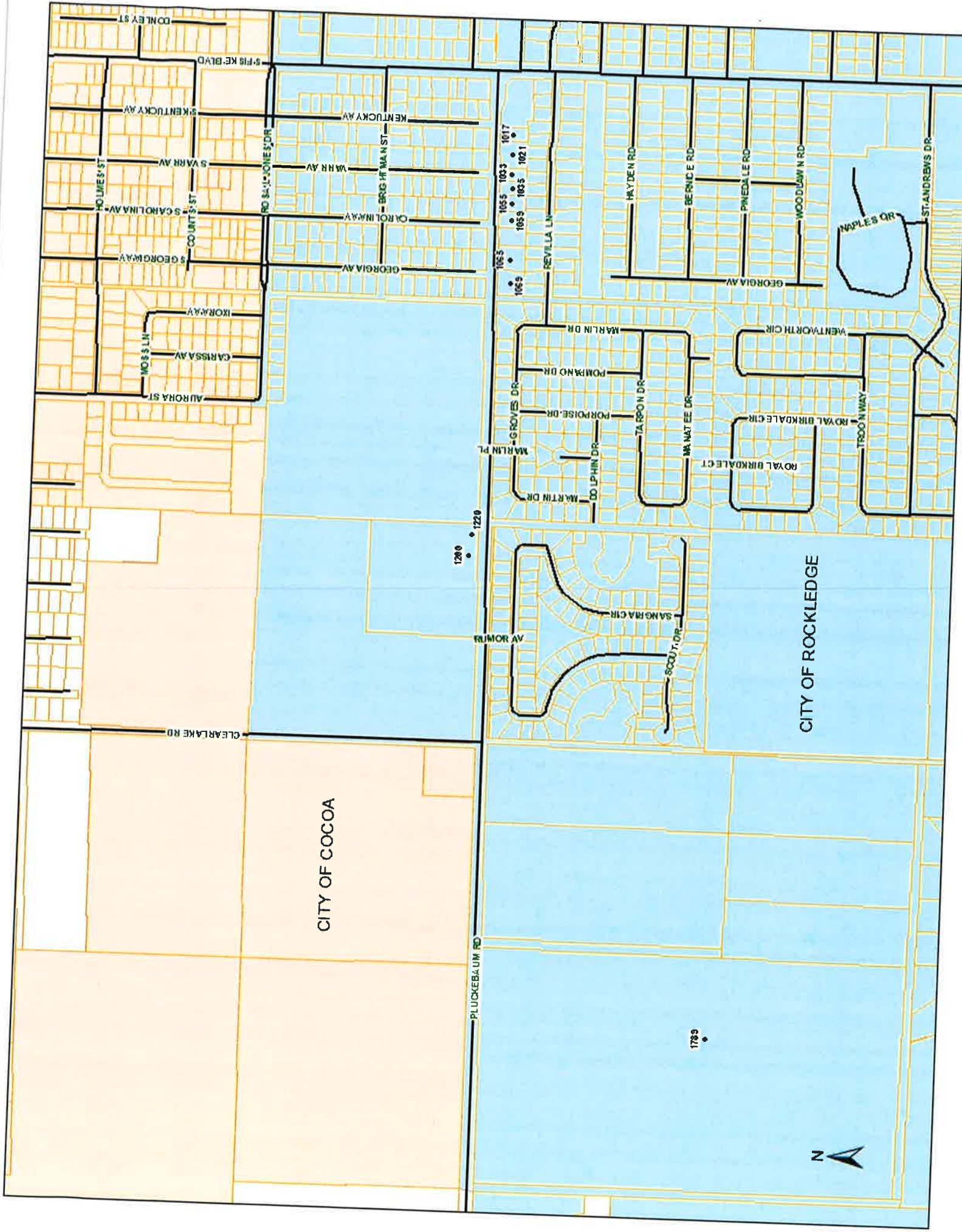
TUCKER LN

MUSTANG LN

WOLMEIER LN

RAOCE PINO LN





CITY OF COCOA

CITY OF ROCKLEDGE



PLUCKEBAUM RD

CLEARLAKE RD

RUMOR AV

SANGRA CIR

SCOUT DR

1260

1220

MARLIN PL

GROVES DR

MARTIN DR

DO LPHIN DR

PORPOISE DR

POMANO DR

MARLIN DR

TARBON DR

MANATEE DR

ROYAL BIRKDALE CIR

ROYAL BIRKDALE CIR

TROON WAY

WENTWORTH CIR

ST ANDREWS DR

WOODLAWN RD

PINEDALE RD

BERNIE RD

HAYDEN RD

1655

1659

1655

1653

1655

1621

1617

1003

1003

1003

1021

1655

1659

1655

1653

1655

1621

1617

1003

1003

1003

1021

1021

1021

1021

1021

1021

1021

1021

1021

1021

1021

1021

1021

1021

AURORA ST

CARISSA AV

KORAY AV

WISS LN

GEORGIA AV

GEORGIA AV

GEORGIA AV

GEORGIA AV

GEORGIA AV

GEORGIA AV

GEORGIA AV

GEORGIA AV

GEORGIA AV

GEORGIA AV

GEORGIA AV

GEORGIA AV

GEORGIA AV

GEORGIA AV

GEORGIA AV

GEORGIA AV

GEORGIA AV

GEORGIA AV

GEORGIA AV

GEORGIA AV

GEORGIA AV

GEORGIA AV

GEORGIA AV

GEORGIA AV

GEORGIA AV

GEORGIA AV

GEORGIA AV

GEORGIA AV

GEORGIA AV

GEORGIA AV

GEORGIA AV

GEORGIA AV

WISS LN

WISS LN

WISS LN

WISS LN

WISS LN

WISS LN

WISS LN

WISS LN

WISS LN

WISS LN

WISS LN

WISS LN

WISS LN

WISS LN

WISS LN

WISS LN

WISS LN

WISS LN

WISS LN

WISS LN

WISS LN

WISS LN

WISS LN

WISS LN

WISS LN

WISS LN

WISS LN

WISS LN

WISS LN

WISS LN

WISS LN

WISS LN

WISS LN

WISS LN

WISS LN

WISS LN

WISS LN

WISS LN

WISS LN

WISS LN

WISS LN

WISS LN

WISS LN

WISS LN

WISS LN

WISS LN

WISS LN

WISS LN

WISS LN

WISS LN

WISS LN

WISS LN

WISS LN

WISS LN

WISS LN

WISS LN

WISS LN

WISS LN

WISS LN

WISS LN

WISS LN

WISS LN

WISS LN

WISS LN

WISS LN

WISS LN

WISS LN

WISS LN

WISS LN

WISS LN

WISS LN

WISS LN

WISS LN

WISS LN

WISS LN

WISS LN

WISS LN

WISS LN

WISS LN

WISS LN

WISS LN

WISS LN

WISS LN

WISS LN

WISS LN

WISS LN

WISS LN

WISS LN

WISS LN

WISS LN

WISS LN

WISS LN

WISS LN

WISS LN

WISS LN

WISS LN

WISS LN

WISS LN

WISS LN

WISS LN

WISS LN

WISS LN

WISS LN

WISS LN

WISS LN

WISS LN

WISS LN

WISS LN

WISS LN

WISS LN

WISS LN

WISS LN

WISS LN

WISS LN

WISS LN

WISS LN

WISS LN

WISS LN

WISS LN

WISS LN

WISS LN

WISS LN

WISS LN

WISS LN

WISS LN

WISS LN

WISS LN

WISS LN

WISS LN

WISS LN

WISS LN

WISS LN

WISS LN

WISS LN

WISS LN

WISS LN

WISS LN

WISS LN

WISS LN

WISS LN

WISS LN

WISS LN

WISS LN

WISS LN

WISS LN

WISS LN

WISS LN

WISS LN

WISS LN

WISS LN

WISS LN

WISS LN

WISS LN

WISS LN

WISS LN

WISS LN

WISS LN

WISS LN

WISS LN

WISS LN

WISS LN

WISS LN

WISS LN

WISS LN

WISS LN

WISS LN

WISS LN

WISS LN

WISS LN

WISS LN

WISS LN

WISS LN

WISS LN

WISS LN

WISS LN

WISS LN

WISS LN

WISS LN

WISS LN

WISS LN

WISS LN

WISS LN

WISS LN

WISS LN

WISS LN

WISS LN

WISS LN

WISS LN

WISS LN

WISS LN

WISS LN

WISS LN

WISS LN

WISS LN

WISS LN

WISS LN

WISS LN

WISS LN

WISS LN

WISS LN

WISS LN

WISS LN

WISS LN

WISS LN

WISS LN

WISS LN

WISS LN

WISS LN

WISS LN

WISS LN

WISS LN

WISS LN

WISS LN

WISS LN

WISS LN

WISS LN

WISS LN

WISS LN

WISS LN

WISS LN

WISS LN

WISS LN

WISS LN

WISS LN

WISS LN

WISS LN

WISS LN

WISS LN

WISS LN

WISS LN

WISS LN

WISS LN

WISS LN

WISS LN

WISS LN

WISS LN

WISS LN

CITY OF COCOA

BREVARD COUNTY

CITY OF ROCKLEDGE

2100

2260

2005

2205

2355

PARRISH RD

S RANGE RD

MUSTANG LN

WRANGLER LN

KYLE LN

PLUCKEBAUM RD

S BURNETT RD

MALLETS BAY LN

STOWE LN

GUM ST

WOOD CIR

WESTERN AV

BROCKINGTON CIR

CATALINA DR

BROPHY BLVD

TOMLIN DR

COX ST

LEFEVER ST

JOHNSON BLVD

GRANT ST

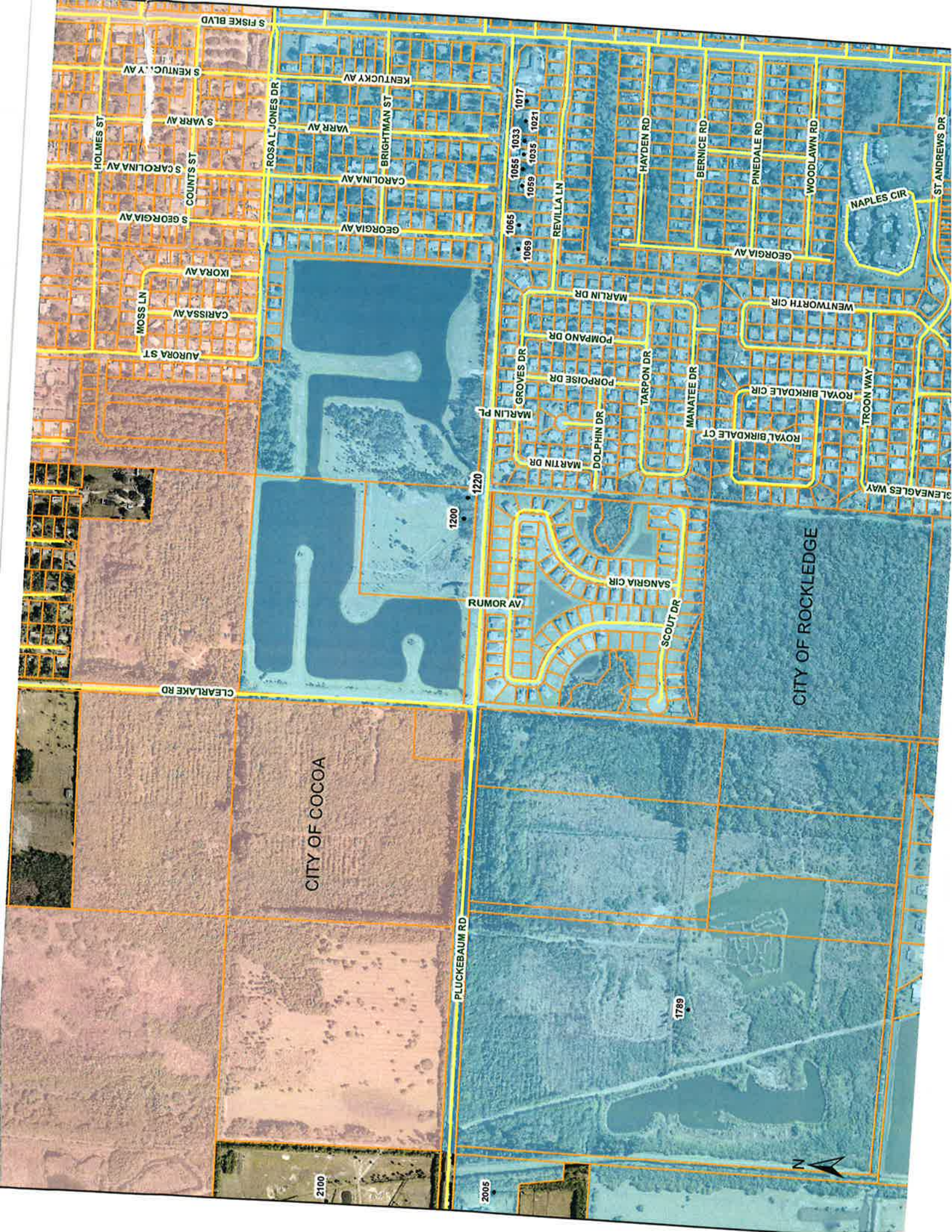
2955

195 HWY

195 HWY

TUCKER LN





S FISKE BLVD  
S KENTUCK, Y AV  
S YARR AV  
S CAROLINA AV  
S GEORGIA AV  
S GEORGIA AV

HOLMES ST  
COUNTS ST  
IKORA AV  
CARISSA AV  
AURORA ST  
MOSS LN

ROSAL JONES DR  
KENTUCKY AV  
VARR AV  
BRIGHTMAN ST  
GEORGIA AV  
CAROLINA AV

1065  
1069  
1033  
1017  
1021

REVILLA LN  
HAYDEN RD  
BERNICE RD  
PINEDALE RD  
WOODLAWN RD  
NAPLES CIR  
ST ANDREWS DR

MARLIN DR  
POMPANO DR  
PORPOISE DR  
GROVES DR  
MARLIN PL  
MARTIN DR  
DOLPHIN DR

MANATEE DR  
ROYAL BIRKDALE CIR  
ROYAL BIRKDALE CT  
TROON WAY  
SENEAGLES WAY

1200  
1220

CITY OF COCOA

RUMOR AV  
SANGRIA CIR  
SCOUT DR

CITY OF ROCKLEDGE

1789

2100  
2005

PLUCKEBAUM RD

