



AGENDA REPORT
May 2, 2019

Scottsmoor Community Planning Analysis

SUBJECT:

Board Direction, Re: Scottsmoor Community Planning Analysis

DEPT/OFFICE:

Planning and Development

REQUESTED ACTION:

Staff is seeking Board direction to conduct a Scottsmoor Community Planning Analysis.

SUMMARY EXPLANATION and BACKGROUND:

During the April 4, 2019 public hearing for 18PZ00153 and 18PZ00154, numerous Scottsmoor residents voiced concerns related to the impact of increasing development densities & zoning intensities in an area containing a substandard transportation network, groundwater salt intrusion, Stormwater runoff impacting the Indian River Lagoon, and flood surge/rise of sea level. As a result of the public hearing, the Board discussed having staff prepare a Small Area Study for Scottsmoor. The Board raised uncertainties about obligating staff resources to conduct a comprehensive study and staff was directed to bring back an estimate for an analysis.

Staff is providing two possible solutions relating to the Scottsmoor Small Area:

1. Community Planning Analysis - Staff estimates \$4,550 (90-100 hours) to conduct a planning analysis which examines the issues raised by the citizens. This approach anticipates up to 3 community meetings with County Departments (Planning & Development, Public Works & Natural Resources) and State Agency (Environmental Health) specifically relating to the concerns voice at the public hearing. Once the issues are refined, staff will research the Goals, Objectives and Policies of the County's Comprehensive Plan to see what policies exist to help guide growth and if new policies need to be developed that relate specifically to the Scottsmoor area.
2. Comprehensive Plan Small Area Study – Staff estimates \$18,200 (360-400 hours) to conduct a Small Area Study to examine all of the existing Comprehensive Plan's Elements Goals, Objectives, and Policies as they relate to Scottsmoor. This type of analysis involves a community committee with numerous County Departments and State Agencies with up to 8 community meetings. Upon completion staff would present the committee's recommendations to update the County's Comprehensive Plan to the Board for consideration.

Please note due to current workload staff does not anticipate starting either option until

the fall 2019.

Options:

1. Direct staff to proceed with the Community Planning Analysis with the aforementioned scope (item 1).
2. Direct staff to proceed with a Comprehensive Plan Small Area Study (item 2).
3. Direct staff to not proceed with the study.
4. Other Board action.

Contact: Tad Calkins, Director (X56532)

ATTACHMENTS:

Description

No Attachments Available



Tammy Rowe, Clerk to the Board, 400 South Street • P.O. Box 999, Titusville, Florida 32781-0999

Telephone: (321) 637-2001
Fax: (321) 264-6972
Tammy.Rowe@brevardclerk.us

May 3, 2019

M E M O R A N D U M

TO: Tad Calkins, Planning and Development Director

RE: Item I.1., Scottsmoor Community Planning Analysis

The Board of County Commissioners, in regular session on May 2, 2019, approved Option 1, to direct staff to proceed with the Community Planning Analysis - staff estimates \$4,550 (90-100 hours) to conduct a planning analysis which examines the issues raised by the citizens. This approach anticipates up to three community meetings with County Departments (Planning and Development, Public Works, and Natural Resources Management) and State Agency (Environmental Health), specifically relating to the concerns voiced at the public hearing. Once the issues are refined, staff will research the Goals, Objectives and Policies of the County's Comprehensive Plan to see what Policies exist to help guide growth and if new policies need to be developed that relate specifically to the Scottsmoor area.

Your continued cooperation is greatly appreciated.

Sincerely yours,

BOARD OF COUNTY COMMISSIONERS
SCOTT ELLIS, CLERK

Tammy Rowe

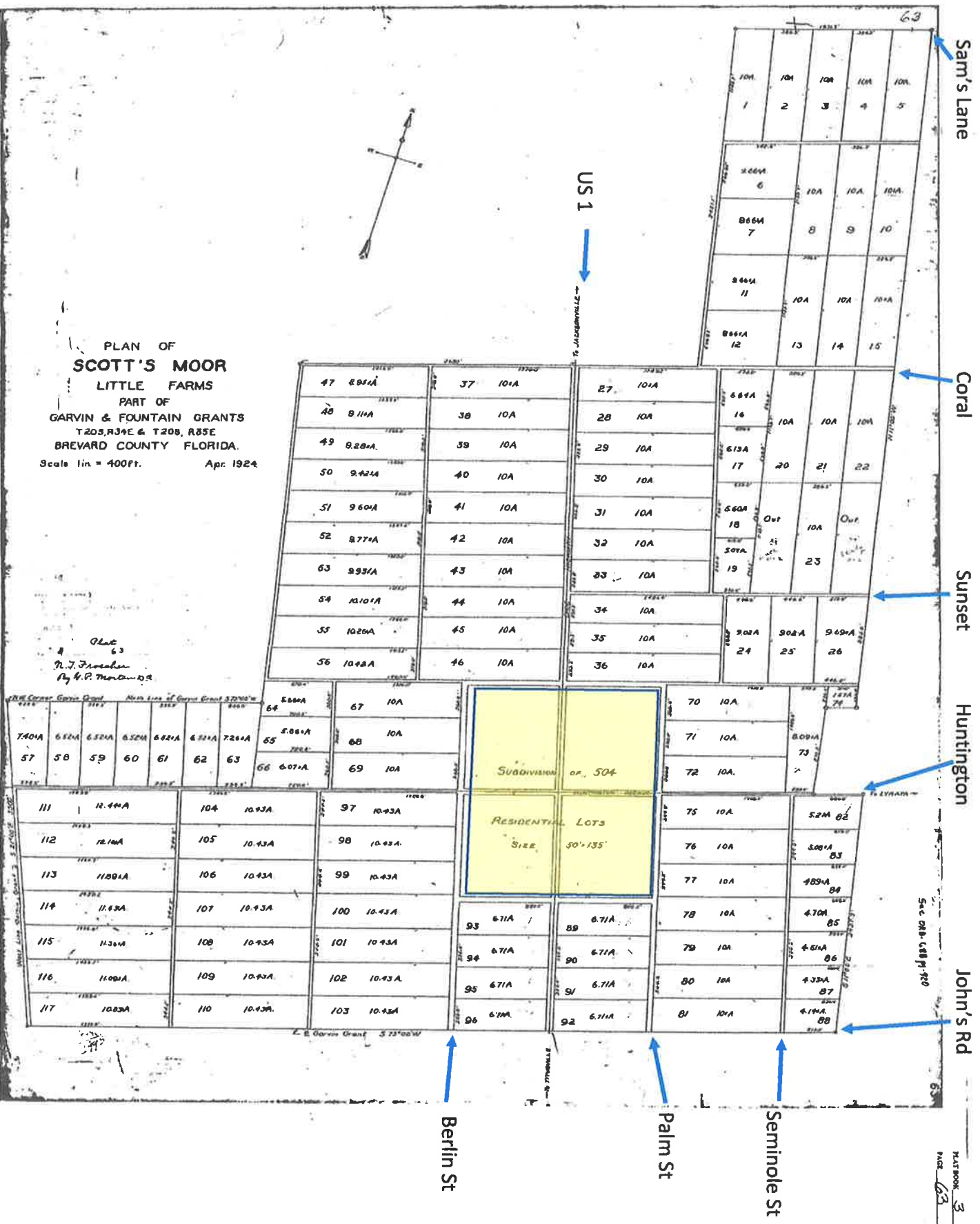
Tammy Rowe, Deputy Clerk

/ds

cc: Each Commissioner
Natural Resources Management Director
Public Works Interim Director
Finance
Budget

Item I 1 Scotts Moor Community Planning Analysis

PLAN OF
SCOTT'S MOOR
LITTLE FARMS
PART OF
GARVIN & FOUNTAIN GRANTS
T20S, R34E & T20S, R35E
BREVARD COUNTY FLORIDA.
Scale 1 in = 400 Ft. Apr. 1924



ITEM I(1)
SCOTSMOOR PLANNING ANALYSIS
BCC 5/2/19

PLAN BOOK 3
PAGE 64

Zoning
RU-1-7

308

- TR-1
- IN(L)
- PUD
- BU-1
- BU-2

CURRENT ZONING

PLAN OF
SCOTT'S-MOOR
PART OF
DARWIN & FOUNTAIN GRANTS
T20S - R34E
BREVARD COUNTY FLORIDA
Scale: 1in=100ft Apr 1984

FLU

RES-1

