



Agenda Report

2725 Judge Fran Jamieson
Way
Viera, FL 32940

New Business - Miscellaneous

J.1.

2/6/2020

Subject:

Motion Directing Staff to Investigate Feasibility of Transferring Ownership of Cherie Down Park to City of Cape Canaveral, Dist. 2

Fiscal Impact:

It is requested that staff identify ongoing maintenance costs associated with this park and report back to the BOCC.

Dept/Office:

District 2

Requested Action:

It is requested that staff be directed to investigate the feasibility of transferring ownership of Cherie Down Park to the City of Cape Canaveral.

Summary Explanation and Background:

The City of Cape Canaveral (hereinafter "City") approached Commissioner Lober, displeased with the manner in which Cherie Down Park has been maintained. The City expressed interest in taking over the park to maintain in perpetuity as a park. Commissioner Lober advised the City that, in order to support any such action, the City would need to guarantee that, should the City ever wish to cease operating the property as a park, that the property revert back to Brevard County in substantially the same condition as it was given. Commissioner Lober also advised, though the parking for this property is technically located in an adjacent parcel, owned by Brevard County Public Schools, that County residents never be charged more for parking than City residents. It is anticipated that any and all revenue generated from parking will remain with and be utilized to maintain and/or improve this particular park. Lastly, Commissioner Lober indicated that he would like to have County staff research whether there are any state and/or federal grants which hinge on continued County ownership of the park. It is requested that staff be directed to investigate the feasibility of transferring ownership of Cherie Down Park to the City of Cape Canaveral, including any restrictions associated with grants received for the property. It is also requested that the BOCC be apprised of the continuing maintenance costs the County will save by deeding the property to the City. It is additionally requested, in the event County staff identify a roadblock to transferring ownership to the City, that staff then examine the possibility of entering into a long-term lease with the City to allow the City to maintain the park.

Clerk to the Board Instructions:

457



Tammy Rowe, Clerk to the Board, 400 South Street • P.O. Box 999, Titusville, Florida 32781-0999

Telephone: (321) 637-2001
Fax: (321) 264-6972
Tammy.Rowe@brevardclerk.us

February 7, 2020

M E M O R A N D U M

TO: Frank Abbate, County Manager

RE: Item J.1., Staff to Investigate Feasibility of Transferring Ownership of Cherie Down Park to City of Cape Canaveral

The Board of County Commissioners, in regular session on February 6, 2020, directed staff to investigate feasibility of transferring ownership of Cherie Down Park to the City of Cape Canaveral.

Your continued cooperation is always appreciated.

Sincerely,

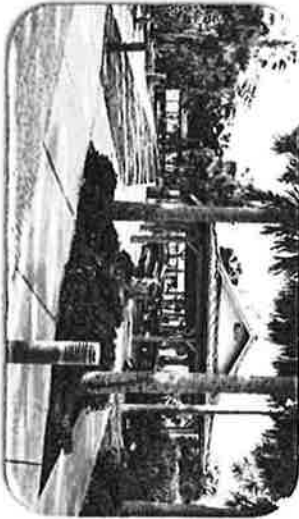
BOARD OF COUNTY COMMISSIONERS
SCOTT ELLIS, CLERK

Tammy Rowe

Tammy Rowe, Deputy Clerk

/kp

cc: Each Commissioner
Parks and Recreation Director



CITY OF CAPE CANAVERAL CHERIE DOWN PARK IDEA BOARD

Cherie Down Park – Bullet Points

Overview:

- Cherie Down Park (CDP) is a 6.99-acre facility located on Ridgewood Avenue in the City of Cape Canaveral.
- Currently owned by Brevard County Board of County Commissioners (BOCC) and the Brevard Public Schools (BPS).
- BOCC has a lease from BPS to use the property as a park and beach access until 2080.
- BOCC has divested itself of certain County Parks located within municipalities and has expressed an interest in doing so with CDP.
- The property hosts, on paper, 106 parking places. Part of this number is derived from an unimproved area (delineated in green in the map below) which is reserved for use by the Army Corp of Engineers (ACOE) as a staging area for beach re-nourishment in perpetuity. This area cannot be paved but can be parked on.
- Amenities include a bathroom, small pavilion, lifeguard shack, outdoor shower and boardwalk.
- There are a number of restrictions that will remain in place regarding usage as a public park and ACOE staging/conservation area.

Future of Park if City-owned:

- The facility will remain available to Cape View students and Staff, BPS and the general public.
- The Park will become a flagship beachfront facility for the City as a resident/tourist, family-centric attraction and destination, further enhancing community-offered amenities.
- We envision building a 2,000 – 3,000 s.f. facility on site that would be a highly interactive Resource Center focusing on environmental education elements including Eco-Friendly/Sustainability Initiatives, Local History and Nature, geared to K-6. Significant BPS interaction would be anticipated with Cape View Elementary Students, but certainly not limited to just one school. Community programs are envisioned as well (oyster mat making, mussel mats, sea oat planting, marine education, etc.). Permanent signage would be installed at the park recognizing the Brevard Public Schools for their donation.
- The first step would be a community wide master planning process at a cost of approximately \$50,000. The master planning outcome would include construction documents and project phasing.
- Capital Improvement/Expansion projects would be phased in as funds become available.
- New revenue opportunities would be explored to offset upgrading, operating and maintenance costs, including Pavilion Rentals and a Concessionaire.
- The City would hire one weekend part-time employee to maintain the facility who would also assist with maintenance of other City facilities. The weekday upkeep would be absorbed by existing Staff.
- The park, with new Capital Improvements, would become a community-engaging facility showcasing public art; highlighting the City of Cape Canaveral's brand of "The Space Between".

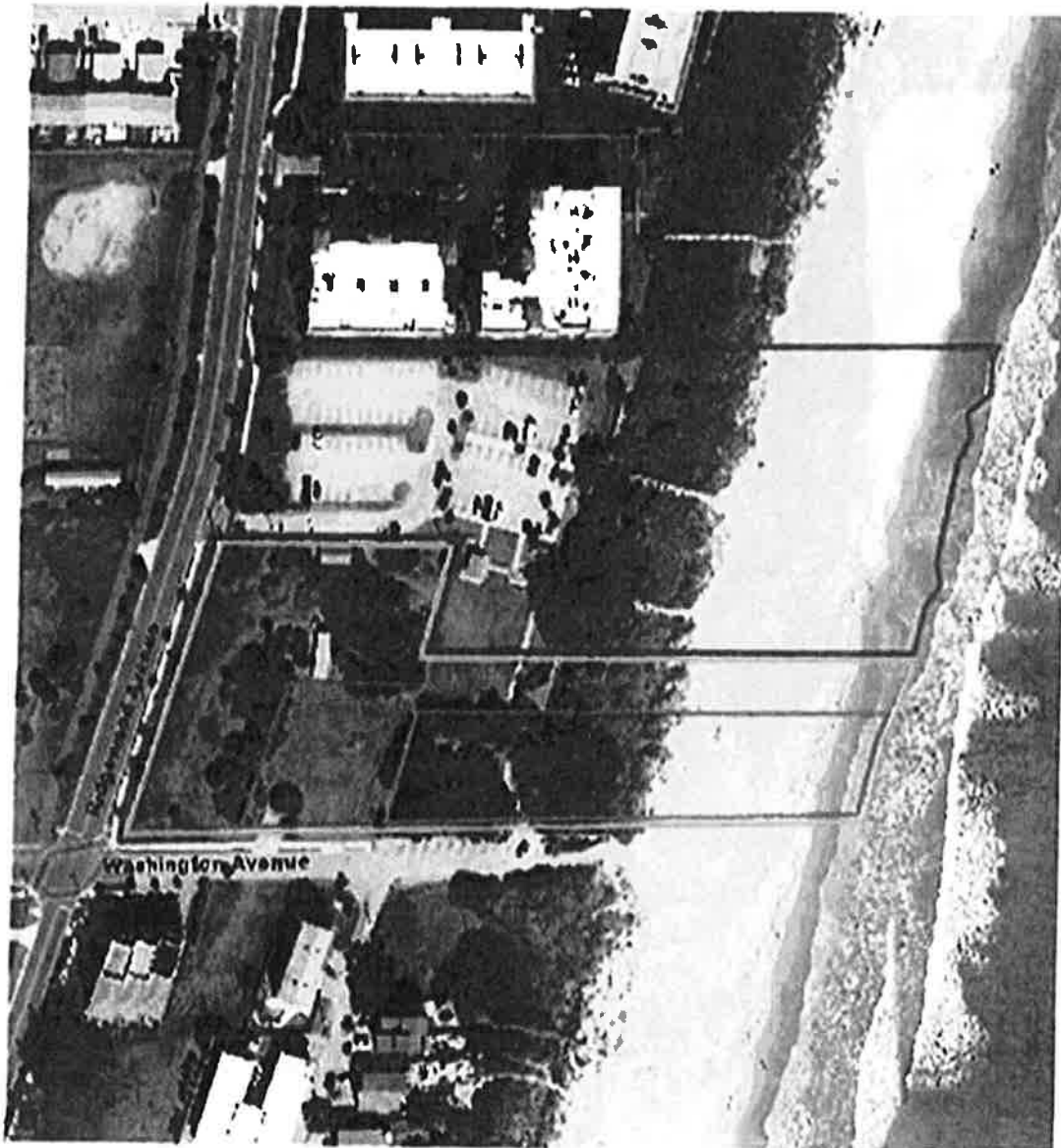


Cape Canaveral support of BPS programs:

The City supports/partners with Cape View through many initiatives including:

- Full time resource officer- approximately \$65k per year including benefits.
- Three part-time crossing guards- \$17k per year.
- Annual Backpack Jamboree. The City funds and finds funding partners for children in need. Last year, 312 full backpacks were provided. Total value \$2,847.
- Support of existing MOU for 50% cost share of repairs to existing westernmost playground. For the most recent repair (2014), the City contributed \$1,800.
- Annual Partnering with PTO in support of *National Kids to Parks Day* celebration, including PTO partner/hosting of the annual *Kickball Tournament* which brings together families and Cape View Staff. The PTO hosts a concession to raise funds; prizes are given to attendees.
- Annual *City Founders Day* celebration. The PTO is invited to sell concessions to raise funds.
- Annual *Light up Cape Canaveral*. Partnering with Cape View and host their choir as part of the event.
- Annual *Student Art Show*. Cape View always has a place showcasing the children's work.
- Annual *Government Week*. The City hosts presentations and informational entertainment to several grade levels at multiple City facilities.
- Annual *Arbor Day*. Students and Mayor actively engaged in earth-sustaining educational presentations and hands-on planting.

Cherie Down Park



☐ COUNTY PROPERTY

☐ PROPERTY PURCHASED
WITH LWCF FUNDS

☐ SCHOOL BOARD PROPERTY

☐ SHORE PROTECTION OVERFLOW
PARKING - 25 SPACES

100 50 0 Feet

**BREVARD COUNTY
PARKS & RECREATION**



DATE: 1/15/14 This map is intended for display purposes only and is not intended for any legal or other use.