



Agenda Report

2725 Judge Fran Jamieson
Way
Viera, FL 32940

Consent

F.4.

5/19/2020

Subject:

Final Plat Approval, Re: The Lakes at Indian River Preserve (Pods 12 and 13)
Developer: Indian River Preserve Estates Corp. District 1

Fiscal Impact:

None

Dept/Office:

Planning and Development

Requested Action:

In accordance with Section 62-2841(i), it is requested that the Board of County Commissioners grant final plat approval and authorize the Chair to sign the final plat The Lakes at Indian River Preserve (Pods 12 and 13).

Summary Explanation and Background:

There are three stages of review for subdivision plan approval: the pre-application conference, the preliminary plat/final engineering plan review, and the final plat review. The pre-application conference for the above project was held on July 27, 2017. The preliminary plat and final engineering plans, which is the second stage of approval, was approved on March 14, 2019. The third stage of review is the final plat approval for recordation.

Staff has reviewed the final plat The Lakes at Indian River Preserve (Pods 12 and 13) subdivision, and has determined that it is in compliance with the applicable ordinances.

The Lakes at Indian River Preserve (Pods 12 and 13) is located south of Clubhouse Drive, on the east side of Indian River Parkway. The proposed subdivision contains 33 single family lots on 17.76 acres.

This approval is subject to minor engineering changes as applicable. Board approval of this project does not relieve the developer from obtaining all other necessary jurisdictional permits.

Reference: 17SD00018, 18WV00015

Contact: Tad Calkins, Director, Extension 58299

Clerk to the Board Instructions:

Please have the plat mylar signed and return to Planning and Development.



May 20, 2020

M E M O R A N D U M

TO: Tad Calkins, Planning and Development Director

RE: Item F.4, Final Plat Approval for The Lakes at Indian River Preserve (Pods 12 and 13)

The Board of County Commissioners, in regular session on May 19, 2020, granted final plat approval in accordance with Section 62-2841(i); and authorized the Chair to execute the final plat with Indian River Preserve Estates Corp. for The Lakes at Indian River Preserve (Pods 12 and 13), subject to minor engineering changes, as applicable, and project does not relieve the developer from obtaining all other necessary jurisdictional permits.

Your continued cooperation is greatly appreciated.

Sincerely yours,

BOARD OF COUNTY COMMISSIONERS
SCOTT ELLIS, CLERK

Kimberly Powell
Kimberly Powell, Deputy Clerk

/cw

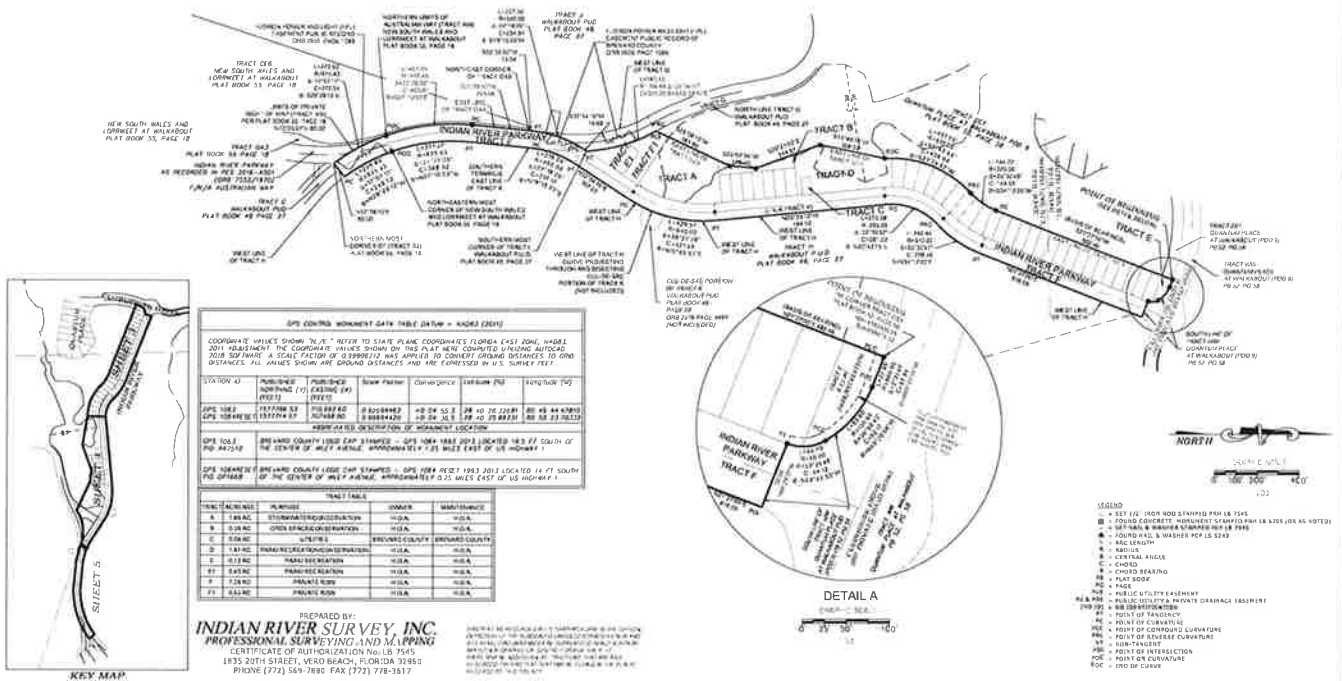
SECTION 1 AND 12, TOWNSHIP 21 SOUTH, RANGE 34 EAST, BREVARD COUNTY, FLORIDA

A REPLAY OF PORTIONS OF TRACT L, N, K, AND G OF THE WALKABOUT PUB, AS RECORDED IN PLAT BOOK 49, PAGES 27 THROUGH 43, OF THE PUBLIC RECORDS OF BREVARD COUNTY, FLORIDA

FLAT BOOK PAGE

WILEY-VCH

PORTIONS OF TRACT 1, N. E. AND C. OF SEABOARD RAIL, AS SPECIFIED IN PLAT BOOK 48, PAGES 27 THROUGH 42, OF THE PUBLIC RECORDS OF BAYLARD COUNTY, FLORIDA

[illegible]

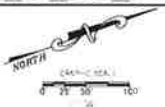
THE LAKES AT INDIAN RIVER PRESERVE (PODS 12 AND 13)

SECTION 1 AND 12, TOWNSHIP 21 SOUTH, RANGE 34 EAST, BREVARD COUNTY, FLORIDA

A REPLAT OF PORTIONS OF TRACT 1, N, K, AND G OF THE WALKABOUT PUD, AS RECORDED IN PLAT BOOK 49, PAGES 27 THROUGH 43, OF THE PUBLIC RECORDS OF BREVARD COUNTY, FLORIDA

PLAT BOOK PAGE

0 25 50 100



CHORD	RADIUS	CENTRAL ANGLE	CHORD LENGTH	CHORD BEARING	CHORD
C1	275.00'	73.37°	50.81'	S29°54'25"W	59.97'
C2	519.00'	73.37°	89.02'	S28°54'38"W	87.98'
C3	275.00'	73.37°	50.81'	S11°42'32"W	48.87'
C4	519.00'	73.37°	89.02'	S11°42'32"W	87.98'
C5	275.00'	73.37°	50.81'	S19°21'30"W	48.87'
C6	519.00'	73.37°	89.02'	S19°21'30"W	87.98'
C7	275.00'	73.37°	50.81'	S28°54'38"W	48.87'
C8	519.00'	73.37°	89.02'	S28°54'38"W	87.98'
C9	275.00'	73.37°	50.81'	S38°42'24"W	48.87'
C10	519.00'	73.37°	89.02'	S38°42'24"W	87.98'
C11	275.00'	73.37°	50.81'	S47°42'24"W	48.87'
C12	519.00'	73.37°	89.02'	S47°42'24"W	87.98'
C13	275.00'	73.37°	50.81'	S56°42'24"W	48.87'
C14	519.00'	73.37°	89.02'	S56°42'24"W	87.98'
C15	275.00'	73.37°	50.81'	S65°42'24"W	48.87'
C16	519.00'	73.37°	89.02'	S65°42'24"W	87.98'
C17	275.00'	73.37°	50.81'	S74°42'24"W	48.87'
C18	519.00'	73.37°	89.02'	S74°42'24"W	87.98'
C19	275.00'	73.37°	50.81'	S83°42'24"W	48.87'
C20	519.00'	73.37°	89.02'	S83°42'24"W	87.98'
C21	275.00'	73.37°	50.81'	S92°42'24"W	48.87'
C22	519.00'	73.37°	89.02'	S92°42'24"W	87.98'
C23	275.00'	73.37°	50.81'	S101°42'24"W	48.87'
C24	519.00'	73.37°	89.02'	S101°42'24"W	87.98'
C25	275.00'	73.37°	50.81'	S110°42'24"W	48.87'
C26	519.00'	73.37°	89.02'	S110°42'24"W	87.98'

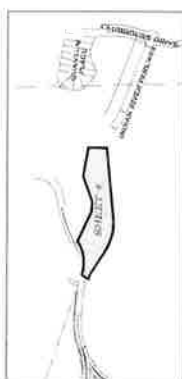
- LEGEND
- 1" = 50' FOR LAKES 100' STAFFED FOR 1/4" IS 1/4"
 - 1" = 100' FOR LAKES 200' STAFFED FOR 1/4" IS 1/4"
 - 1" = 200' FOR LAKES 400' STAFFED FOR 1/4" IS 1/4"
 - 1" = 400' FOR LAKES 800' STAFFED FOR 1/4" IS 1/4"
 - 1" = 800' FOR LAKES 1600' STAFFED FOR 1/4" IS 1/4"
 - 1" = 1600' FOR LAKES 3200' STAFFED FOR 1/4" IS 1/4"
 - 1" = 3200' FOR LAKES 6400' STAFFED FOR 1/4" IS 1/4"
 - 1" = 6400' FOR LAKES 12800' STAFFED FOR 1/4" IS 1/4"
 - 1" = 12800' FOR LAKES 25600' STAFFED FOR 1/4" IS 1/4"
 - 1" = 25600' FOR LAKES 51200' STAFFED FOR 1/4" IS 1/4"
 - 1" = 51200' FOR LAKES 102400' STAFFED FOR 1/4" IS 1/4"
 - 1" = 102400' FOR LAKES 204800' STAFFED FOR 1/4" IS 1/4"
 - 1" = 204800' FOR LAKES 409600' STAFFED FOR 1/4" IS 1/4"
 - 1" = 409600' FOR LAKES 819200' STAFFED FOR 1/4" IS 1/4"
 - 1" = 819200' FOR LAKES 1638400' STAFFED FOR 1/4" IS 1/4"
 - 1" = 1638400' FOR LAKES 3276800' STAFFED FOR 1/4" IS 1/4"
 - 1" = 3276800' FOR LAKES 6553600' STAFFED FOR 1/4" IS 1/4"
 - 1" = 6553600' FOR LAKES 13107200' STAFFED FOR 1/4" IS 1/4"
 - 1" = 13107200' FOR LAKES 26214400' STAFFED FOR 1/4" IS 1/4"
 - 1" = 26214400' FOR LAKES 52428800' STAFFED FOR 1/4" IS 1/4"
 - 1" = 52428800' FOR LAKES 104857600' STAFFED FOR 1/4" IS 1/4"
 - 1" = 104857600' FOR LAKES 209715200' STAFFED FOR 1/4" IS 1/4"
 - 1" = 209715200' FOR LAKES 419430400' STAFFED FOR 1/4" IS 1/4"
 - 1" = 419430400' FOR LAKES 838860800' STAFFED FOR 1/4" IS 1/4"
 - 1" = 838860800' FOR LAKES 1677721600' STAFFED FOR 1/4" IS 1/4"
 - 1" = 1677721600' FOR LAKES 3355443200' STAFFED FOR 1/4" IS 1/4"
 - 1" = 3355443200' FOR LAKES 6710886400' STAFFED FOR 1/4" IS 1/4"
 - 1" = 6710886400' FOR LAKES 13421772800' STAFFED FOR 1/4" IS 1/4"
 - 1" = 13421772800' FOR LAKES 26843545600' STAFFED FOR 1/4" IS 1/4"
 - 1" = 26843545600' FOR LAKES 53687091200' STAFFED FOR 1/4" IS 1/4"
 - 1" = 53687091200' FOR LAKES 107374182400' STAFFED FOR 1/4" IS 1/4"
 - 1" = 107374182400' FOR LAKES 214748364800' STAFFED FOR 1/4" IS 1/4"
 - 1" = 214748364800' FOR LAKES 429496729600' STAFFED FOR 1/4" IS 1/4"
 - 1" = 429496729600' FOR LAKES 858993459200' STAFFED FOR 1/4" IS 1/4"
 - 1" = 858993459200' FOR LAKES 1717986918400' STAFFED FOR 1/4" IS 1/4"
 - 1" = 1717986918400' FOR LAKES 3435973836800' STAFFED FOR 1/4" IS 1/4"
 - 1" = 3435973836800' FOR LAKES 6871947673600' STAFFED FOR 1/4" IS 1/4"
 - 1" = 6871947673600' FOR LAKES 13743895347200' STAFFED FOR 1/4" IS 1/4"
 - 1" = 13743895347200' FOR LAKES 27487790694400' STAFFED FOR 1/4" IS 1/4"
 - 1" = 27487790694400' FOR LAKES 54975581388800' STAFFED FOR 1/4" IS 1/4"
 - 1" = 54975581388800' FOR LAKES 109951162777600' STAFFED FOR 1/4" IS 1/4"
 - 1" = 109951162777600' FOR LAKES 219902325555200' STAFFED FOR 1/4" IS 1/4"
 - 1" = 219902325555200' FOR LAKES 439804651110400' STAFFED FOR 1/4" IS 1/4"
 - 1" = 439804651110400' FOR LAKES 879609302220800' STAFFED FOR 1/4" IS 1/4"
 - 1" = 879609302220800' FOR LAKES 1759218604441600' STAFFED FOR 1/4" IS 1/4"
 - 1" = 1759218604441600' FOR LAKES 3518437208883200' STAFFED FOR 1/4" IS 1/4"
 - 1" = 3518437208883200' FOR LAKES 7036874417766400' STAFFED FOR 1/4" IS 1/4"
 - 1" = 7036874417766400' FOR LAKES 14073748835532800' STAFFED FOR 1/4" IS 1/4"
 - 1" = 14073748835532800' FOR LAKES 28147497671065600' STAFFED FOR 1/4" IS 1/4"
 - 1" = 28147497671065600' FOR LAKES 56294995342131200' STAFFED FOR 1/4" IS 1/4"
 - 1" = 56294995342131200' FOR LAKES 112589990684262400' STAFFED FOR 1/4" IS 1/4"
 - 1" = 112589990684262400' FOR LAKES 225179981368524800' STAFFED FOR 1/4" IS 1/4"
 - 1" = 225179981368524800' FOR LAKES 450359962737049600' STAFFED FOR 1/4" IS 1/4"
 - 1" = 450359962737049600' FOR LAKES 900719925474099200' STAFFED FOR 1/4" IS 1/4"
 - 1" = 900719925474099200' FOR LAKES 1801439850948198400' STAFFED FOR 1/4" IS 1/4"
 - 1" = 1801439850948198400' FOR LAKES 3602879701896396800' STAFFED FOR 1/4" IS 1/4"
 - 1" = 3602879701896396800' FOR LAKES 7205759403792793600' STAFFED FOR 1/4" IS 1/4"
 - 1" = 7205759403792793600' FOR LAKES 14411518807585587200' STAFFED FOR 1/4" IS 1/4"
 - 1" = 14411518807585587200' FOR LAKES 28823037615171174400' STAFFED FOR 1/4" IS 1/4"
 - 1" = 28823037615171174400' FOR LAKES 57646075230342348800' STAFFED FOR 1/4" IS 1/4"
 - 1" = 57646075230342348800' FOR LAKES 115292150460684697600' STAFFED FOR 1/4" IS 1/4"
 - 1" = 115292150460684697600' FOR LAKES 230584300921369395200' STAFFED FOR 1/4" IS 1/4"
 - 1" = 230584300921369395200' FOR LAKES 461168601842738790400' STAFFED FOR 1/4" IS 1/4"
 - 1" = 461168601842738790400' FOR LAKES 922337203685477580800' STAFFED FOR 1/4" IS 1/4"
 - 1" = 922337203685477580800' FOR LAKES 1844674407370955161600' STAFFED FOR 1/4" IS 1/4"
 - 1" = 1844674407370955161600' FOR LAKES 3689348814741910323200' STAFFED FOR 1/4" IS 1/4"
 - 1" = 3689348814741910323200' FOR LAKES 7378697629483820646400' STAFFED FOR 1/4" IS 1/4"
 - 1" = 7378697629483820646400' FOR LAKES 14757395258967641292800' STAFFED FOR 1/4" IS 1/4"
 - 1" = 14757395258967641292800' FOR LAKES 29514790517935282585600' STAFFED FOR 1/4" IS 1/4"
 - 1" = 29514790517935282585600' FOR LAKES 59029581035870565171200' STAFFED FOR 1/4" IS 1/4"
 - 1" = 59029581035870565171200' FOR LAKES 118059162071741130342400' STAFFED FOR 1/4" IS 1/4"
 - 1" = 118059162071741130342400' FOR LAKES 236118324143482260684800' STAFFED FOR 1/4" IS 1/4"
 - 1" = 236118324143482260684800' FOR LAKES 472236648286964521369600' STAFFED FOR 1/4" IS 1/4"
 - 1" = 472236648286964521369600' FOR LAKES 944473296573929042739200' STAFFED FOR 1/4" IS 1/4"
 - 1" = 944473296573929042739200' FOR LAKES 1888946593147858085478400' STAFFED FOR 1/4" IS 1/4"
 - 1" = 1888946593147858085478400' FOR LAKES 3777893186295716170956800' STAFFED FOR 1/4" IS 1/4"
 - 1" = 3777893186295716170956800' FOR LAKES 7555786372591432341913600' STAFFED FOR 1/4" IS 1/4"
 - 1" = 7555786372591432341913600' FOR LAKES 15111572745182864683827200' STAFFED FOR 1/4" IS 1/4"
 - 1" = 15111572745182864683827200' FOR LAKES 30223145490365729367654400' STAFFED FOR 1/4" IS 1/4"
 - 1" = 30223145490365729367654400' FOR LAKES 60446290980731458735308800' STAFFED FOR 1/4" IS 1/4"
 - 1" = 60446290980731458735308800' FOR LAKES 120892581961462917470617600' STAFFED FOR 1/4" IS 1/4"
 - 1" = 120892581961462917470617600' FOR LAKES 241785163922925834941235200' STAFFED FOR 1/4" IS 1/4"
 - 1" = 241785163922925834941235200' FOR LAKES 483570327845851669882470400' STAFFED FOR 1/4" IS 1/4"
 - 1" = 483570327845851669882470400' FOR LAKES 967140655691703339764940800' STAFFED FOR 1/4" IS 1/4"
 - 1" = 967140655691703339764940800' FOR LAKES 1934281311383406679529881600' STAFFED FOR 1/4" IS 1/4"
 - 1" = 1934281311383406679529881600' FOR LAKES 3868562622766813359059763200' STAFFED FOR 1/4" IS 1/4"
 - 1" = 3868562622766813359059763200' FOR LAKES 7737125245533626718119526400' STAFFED FOR 1/4" IS 1/4"
 - 1" = 7737125245533626718119526400' FOR LAKES 15474250491067253436239052800' STAFFED FOR 1/4" IS 1/4"
 - 1" = 15474250491067253436239052800' FOR LAKES 30948500982134506872478105600' STAFFED FOR 1/4" IS 1/4"
 - 1" = 30948500982134506872478105600' FOR LAKES 61897001964269013744956211200' STAFFED FOR 1/4" IS 1/4"
 - 1" = 61897001964269013744956211200' FOR LAKES 123794003928538027489912422400' STAFFED FOR 1/4" IS 1/4"
 - 1" = 123794003928538027489912422400' FOR LAKES 247588007857076054979824844800' STAFFED FOR 1/4" IS 1/4"
 - 1" = 247588007857076054979824844800' FOR LAKES 495176015714152109959649689600' STAFFED FOR 1/4" IS 1/4"
 - 1" = 495176015714152109959649689600' FOR LAKES 990352031428304219919299379200' STAFFED FOR 1/4" IS 1/4"
 - 1" = 990352031428304219919299379200' FOR LAKES 1980704062856608439838598758400' STAFFED FOR 1/4" IS 1/4"
 - 1" = 1980704062856608439838598758400' FOR LAKES 3961408125713216879677197516800' STAFFED FOR 1/4" IS 1/4"
 - 1" = 3961408125713216879677197516800' FOR LAKES 7922816251426433759354395033600' STAFFED FOR 1/4" IS 1/4"
 - 1" = 7922816251426433759354395033600' FOR LAKES 15845632502852867518708790067200' STAFFED FOR 1/4" IS 1/4"
 - 1" = 15845632502852867518708790067200' FOR LAKES 31691265005705735037417580134400' STAFFED FOR 1/4" IS 1/4"
 - 1" = 31691265005705735037417580134400' FOR LAKES 63382530011411470074835160268800' STAFFED FOR 1/4" IS 1/4"
 - 1" = 63382530011411470074835160268800' FOR LAKES 126765060022822940149670320537600' STAFFED FOR 1/4" IS 1/4"
 - 1" = 126765060022822940149670320537600' FOR LAKES 253530120045645880299340641075200' STAFFED FOR 1/4" IS 1/4"
 - 1" = 253530120045645880299340641075200' FOR LAKES 507060240091291760598681282150400' STAFFED FOR 1/4" IS 1/4"
 - 1" = 507060240091291760598681282150400' FOR LAKES 1014120480182583521197362564300800' STAFFED FOR 1/4" IS 1/4"
 - 1" = 1014120480182583521197362564300800' FOR LAKES 2028240960365167042394725128601600' STAFFED FOR 1/4" IS 1/4"
 - 1" = 2028240960365167042394725128601600' FOR LAKES 4056481920730334084789450257203200' STAFFED FOR 1/4" IS 1/4"
 - 1" = 4056481920730334084789450257203200' FOR LAKES 8112963841460668169578900514406400' STAFFED FOR 1/4" IS 1/4"
 - 1" = 8112963841460668169578900514406400' FOR LAKES 16225927682921336339157801028812800' STAFFED FOR 1/4" IS 1/4"
 - 1" = 16225927682921336339157801028812800' FOR LAKES 32451855365842672678315602057625600' STAFFED FOR 1/4" IS 1/4"
 - 1" = 32451855365842672678315602057625600' FOR LAKES 64903710731685345356631204115251200' STAFFED FOR 1/4" IS 1/4"
 - 1" = 64903710731685345356631204115251200' FOR LAKES 129807421463370690713262408230502400' STAFFED FOR 1/4" IS 1/4"
 - 1" = 129807421463370690713262408230502400' FOR LAKES 259614842926741381426524816461004800' STAFFED FOR 1/4" IS 1/4"
 - 1" = 259614842926741381426524816461004800' FOR LAKES 519229685853482762853049632922009600' STAFFED FOR 1/4" IS 1/4"
 - 1" = 519229685853482762853049632922009600' FOR LAKES 1038459371706965525706099265844019200' STAFFED FOR 1/4" IS 1/4"
 - 1" = 1038459371706965525706099265844019200' FOR LAKES 2076918743413931051412198531688038400' STAFFED FOR 1/4" IS 1/4"
 - 1" = 2076918743413931051412198531688038400' FOR LAKES 4153837486827862102824397063376076800' STAFFED FOR 1/4" IS 1/4"
 - 1" = 4153837486827862102824397063376076800' FOR LAKES 8307674973655724205648794126752153600' STAFFED FOR 1/4" IS 1/4"
 - 1" = 8307674973655724205648794126752153600' FOR LAKES 16615349947311448411297588253504307200' STAFFED FOR 1/4" IS 1/4"
 - 1" = 16615349947311448411297588253504307200' FOR LAKES 33230699894622896822595176507008614400' STAFFED FOR 1/4" IS 1/4"
 - 1" = 33230699894622896822595176507008614400' FOR LAKES 66461399789245793645190353014017228800' STAFFED FOR 1/4" IS 1/4"
 - 1" = 66461399789245793645190353014017228800' FOR LAKES 132922799578491587290380706028034457600' STAFFED FOR 1/4" IS 1/4"
 - 1" = 132922799578491587290380706028034457600' FOR LAKES 265845599156983174580761412056068915200' STAFFED FOR 1/4" IS 1/4"
 - 1" = 265845599156983174580761412056068915200' FOR LAKES 531691198313966349161522824112137830400' STAFFED FOR 1/4" IS 1/4"
 - 1" = 531691198313966349161522824112137830400' FOR LAKES 1063382396627932698323045648224275660800' STAFFED FOR 1/4" IS 1/4"
 - 1" = 1063382396627932698323045648224275660800' FOR LAKES 2126764793255865396646091296448551321600' STAFFED FOR 1/4" IS 1/4"
 - 1" = 2126764793255865396646091296448551321600' FOR LAKES 4253529586511730793292182592897102643200' STAFFED FOR 1/4" IS 1/4"
 - 1" = 4253529586511730793292182592897102643200' FOR LAKES 8507059173023461586584365185794205286400' STAFFED FOR 1/4" IS 1/4"
 - 1" = 8507059173023461586584365185794205286400' FOR LAKES 17014118346046923173168730371588410572800' STAFFED FOR 1/4" IS 1/4"
 - 1" = 17014118346046923173168730371588410572800' FOR LAKES 34028236692093846346337460743176821145600' STAFFED FOR 1/4" IS 1/4"
 - 1" = 34028236692093846346337460743176821145600' FOR LAKES 68056473384187692692674921486353642291200' STAFFED FOR 1/4" IS 1/4"
 - 1" = 68056473384187692692674921486353642291200' FOR LAKES 136112946768375385385349842972707284582400' STAFFED FOR 1/4" IS 1/4"
 - 1" = 136112946768375385385349842972707284582400' FOR LAKES 272225893536750770770699685945414569164800' STAFFED FOR 1/4" IS 1/4"
 - 1

SECTION 1 AND 12, TOWNSHIP 21 SOUTH, RANGE 34 EAST, BREVARD COUNTY, FLORIDA

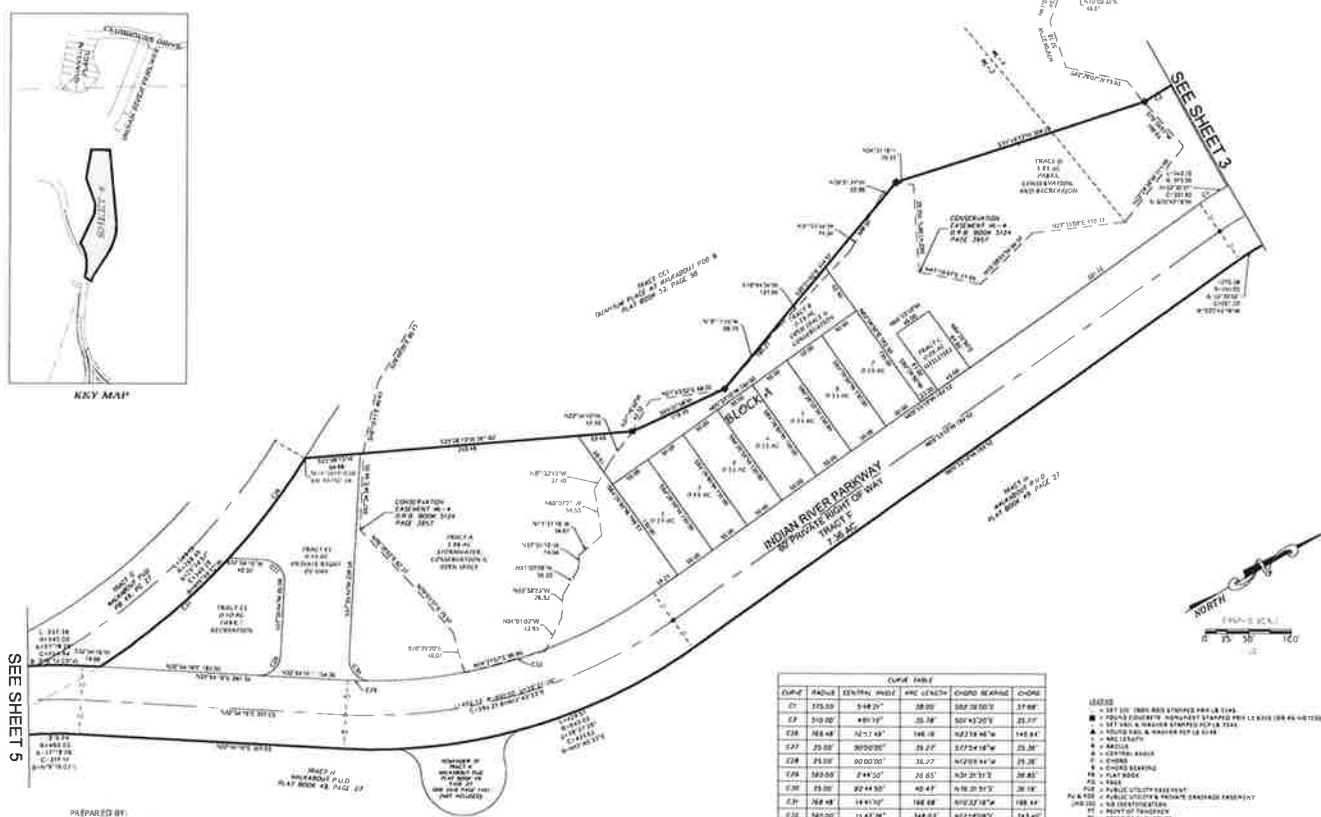
A REPLAT OF PORTIONS OF TRACT L, N, K, AND G OF THE WALKABOUT PUD, AS RECORDED IN PLAT BOOK 49, PAGES 27 THROUGH 43, OF THE PUBLIC RECORDS OF BREVARD COUNTY, FLORIDA

PLAT BOOK	PAGE
-----------	------

515 6 of 3



KAY AKA!



PREPARED BY:
INDIAN RIVER SURVEY, INC.
PROFESSIONAL SURVEYING AND MAPPING
CERTIFICATE OF AUTHORIZATION No. LB 7545
1835 20TH STREET, VERO BEACH, FLORIDA 32960
PHONE (772) 569-7880 FAX (772) 778-3617

[illegible]

CLAMP	RA2/IN	CENTRAL ANGLE	ARC LENGTH	CHORD BEARING	CHORD
01	315.30	51°48'21"	38.00	162°30'00"	37.68
02	310.20	48°01'31"	35.58	160°22'05"	35.11
03	308.48	45°12'48"	34.08	158°16'16"	34.09
04	307.07	43°00'00"	32.27	155°54'16"	32.36
05	306.03	40°00'00"	30.27	152°58'16"	30.36
06	305.00	37°44'50"	28.65	150°21'31"	28.80
07	304.00	35°44'54"	27.41	147°48'51"	27.56
08	303.00	34°00'00"	26.00	145°00'00"	26.00
09	302.00	32°22'44"	24.47	142°22'16"	24.47
10	301.00	30°44'54"	22.83	139°48'16"	22.83

[illegible]

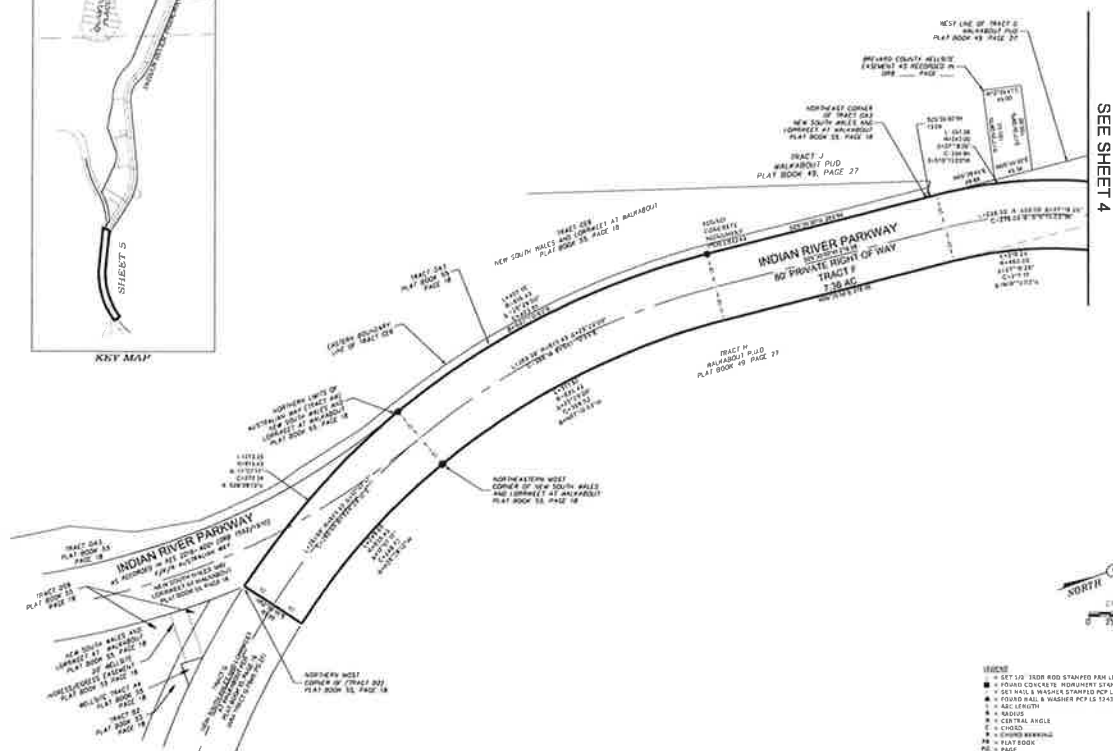
SECTION 1 AND 12, TOWNSHIP 21 SOUTH, RANGE 34 EAST, BREVARD COUNTY, FLORIDA

A REPLAT OF PORTIONS OF TRACT L, N, K, AND G OF THE WALKABOUT PUD, AS RECORDED IN PLAT BOOK 49, PAGES 27 THROUGH 43, OF THE PUBLIC RECORDS OF BREVARD COUNTY, FLORIDA.

PLAT BOOK	PAGE
-----------	------



KEY MAP



SEE SHEET 14



PREPARED BY:
INDIAN RIVER SURVEY, INC.
PROFESSIONAL SURVEYING AND MAPPING
CERTIFICATE OF AUTHORIZATION No. LB 2345
1825 20TH STREET, VERO BEACH, FLORIDA 32960
PHONE (772) 569-7880 FAX (772) 778-3617

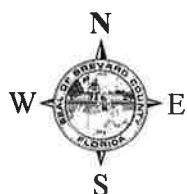
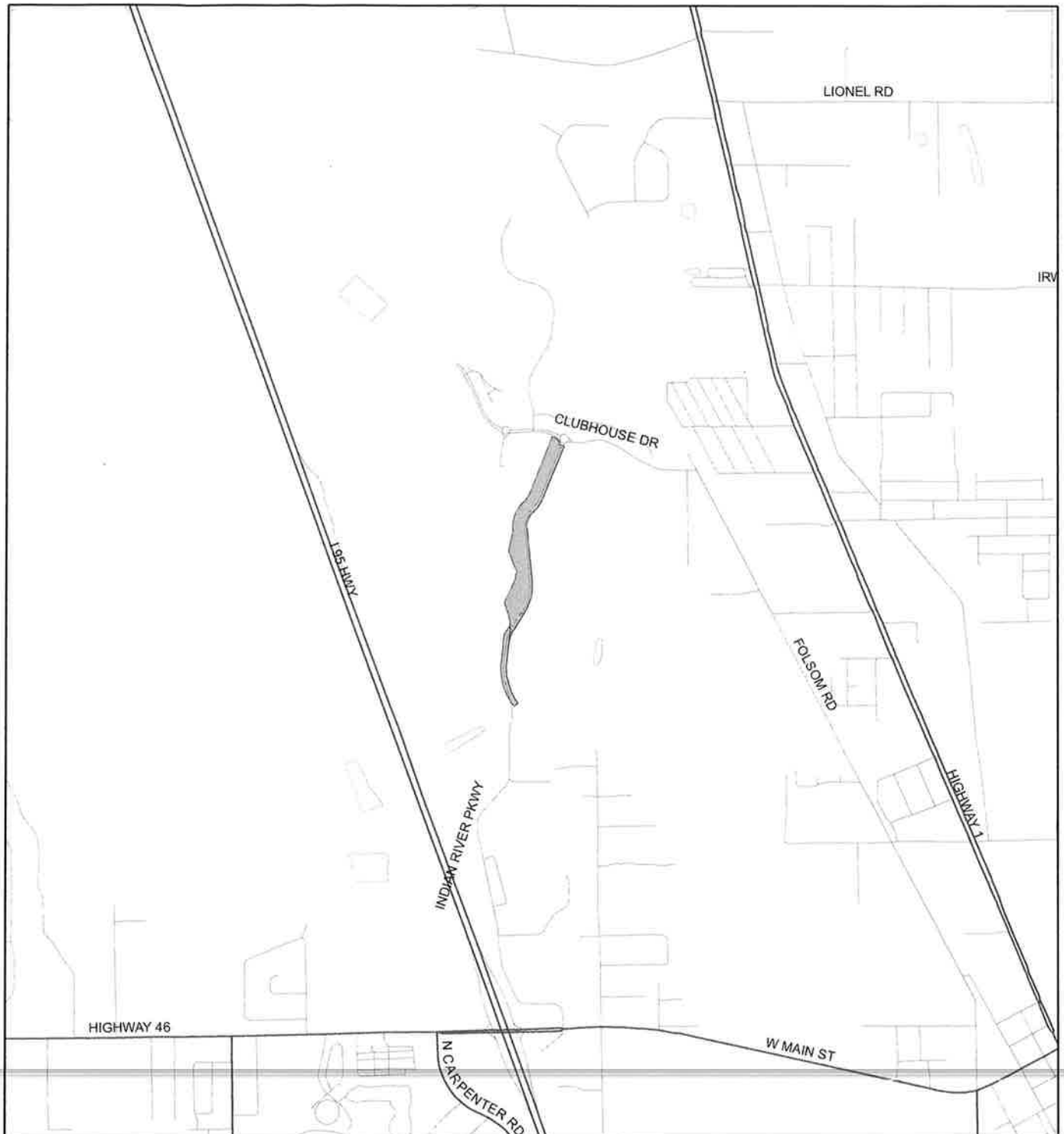
在 2008 年 12 月 1 日，本公司与上海浦东发展银行股份有限公司（以下简称“浦发银行”）签订了《授信额度协议》，授信额度为人民币 10 亿元，期限自 2008 年 12 月 1 日起至 2011 年 12 月 31 日止。该协议项下的授信额度将用于本公司日常经营需要。截至 2009 年 12 月 31 日，本公司已从浦发银行获得授信额度人民币 10 亿元，其中已使用授信额度人民币 1.5 亿元。

[illegible]

LOCATION MAP

THE LAKES AT INDIAN RIVER PRESERVE (PODS 12 AND 13)

17SD00018



1:24,000 or 1 inch = 2,000 feet

 Subject Property

This map was compiled from recorded documents and does not reflect an actual survey. The Brevard County Board of County Commissioners does not assume responsibility for errors or omissions hereon.

Produced by BoCC - GIS Date: 4/24/2020