

RESOLUTIONS, AWARDS AND PRESENTATIONS
E. ITEM 5.



AGENDA REPORT
March 26, 2019

**Resolution Adopting the East Central Florida Regional Resiliency Action
Plan, District 2**

SUBJECT:

Resolution Adopting the East Central Florida Regional Resiliency Action Plan

DEPT/OFFICE:

District 2

REQUESTED ACTION:

Commission is asked to approve the attached resolution offered by Commissioner Lober after listening to a presentation by Tara McCue (ECFRPC).

SUMMARY EXPLANATION and BACKGROUND:

CLERK TO THE BOARD INSTRUCTIONS:

No plaque is needed for this resolution.

ATTACHMENTS:

Description

☐ **Resolution**

☐ **Presentation by Tara McCue**



Tammy Rowe, Clerk to the Board, 400 South Street • P.O. Box 999, Titusville, Florida 32781-0999

Telephone: (321) 637-2001
Fax: (321) 264-6972
Tammy.Rowe@brevardclerk.us

March 27, 2019

M E M O R A N D U M

TO: Commissioner Bryan Lober, District 2 Attn: Fritz VanVolkenburgh

RE: Item E.5., Resolution Adopting the East Central Florida Regional Resiliency Action Plan (ECFRRAP)

The Board of County Commissioners, in regular session on March 26, 2019, acknowledged presentation given by Tara McCue, East Central Florida Regional Planning Council (ECFRPC) for the ECFRRAP; and adopted Resolution No. 19-039, agreeing to the ECFRRAP.

Enclosed is a copy of the Resolution.

Your continued cooperation is always appreciated.

Sincerely,

BOARD OF COUNTY COMMISSIONERS
SCOTT ELLIS, CLERK

Denna Scott
for Tammy Rowe, Deputy Clerk

/dt

Encl. (1)

cc: Each Commissioner
County Manager

Resolution 19- 039

Adopting the East Central Florida Regional Resiliency Action Plan

WHEREAS, there is an increasing need for resiliency against future threats, such as elevated levels of flooding and erosion, changes in storm intensity and frequency, heat impacts, sea level rise, and others, which calls for action at every level of government and in the private and not-for-profit sectors; and

WHEREAS, fostering resilience is a long-term effort and requires holistic planning and preparation to increase resilience in the built, natural and social environment; and

WHEREAS, action, leadership, and education of and by local governments and partners to improve resilience across disciplines provide multiple benefits; and

WHEREAS, these benefits include the implementation of green and gray infrastructure, protecting the natural environment, improving health and wellbeing and increasing economic and societal opportunities; and

WHEREAS, the East Central Florida Regional Resiliency Action Plan (ECF RRAP) was formulated for and by local governments, federal, regional and state agencies, educational institutions, non-government organizations, and other stakeholders; and

WHEREAS, the ECF RRAP recognizes the clear relationship between emergency management, planning, health & safety, and economic development and aims to continue to fill gaps within the region and pursue initiatives that will achieve measurable improvements in risk reduction and the building of resilience in the region; and

WHEREAS, the Fixing America's Surface Transportation (FAST) Act calls for transportation planning to consider and implement resiliency in their planning and to reduce vulnerability in existing infrastructure; and

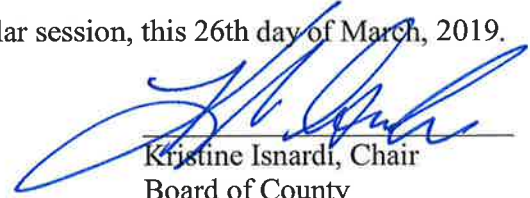
WHEREAS, the Brevard County Board of County Commissioners recognizes resiliency and the success of the ECF RRAP depends on the participation of and collaboration with all local jurisdictions and partners, and a commitment to work together towards common goals; and

WHEREAS, the Space Coast Transportation Planning Organization unanimously adopted a nearly identical resolution on Thursday, March 14, 2019.

NOW THEREFORE BE IT RESOLVED that the Brevard County Board of County Commissioners agrees to adopt the East Central Florida Regional Resiliency Action Plan to

advance the direct implementation of activities aimed to improve safety, long-term resilience, and sustainability in the unincorporated portions of Brevard County, across sectors, expand economic sustainability and response to vulnerabilities within the community.

DONE, ORDERED AND ADOPTED, in regular session, this 26th day of March, 2019.



Kristine Isnardi, Chair
Board of County
Commissioners
Brevard County, Florida
Approved Board 3/26/19

Attest:



Scott Ellis, Clerk

Brevard



County

BOARD OF COUNTY COMMISSIONERS

Resolution

ADOPTING THE EAST CENTRAL FLORIDA REGIONAL RESILIENCY ACTION PLAN

WHEREAS, there is an increasing need for resiliency against future threats, such as elevated levels of flooding and erosion, changes in storm intensity and frequency, heat impacts, sea level rise, and others, which calls for action at every level of government and in the private and not-for-profit sectors; and

WHEREAS, fostering resilience is a long-term effort and requires holistic planning and preparation to increase resilience in the built, natural and social environment; and

WHEREAS, action, leadership, and education of and by local governments and partners to improve resilience across disciplines provide multiple benefits; and

WHEREAS, these benefits include the implementation of green and gray infrastructure, protecting the natural environment, improving health and well-being and increasing economic and societal opportunities; and

WHEREAS, the EAST CENTRAL FLORIDA REGIONAL RESILIENCY ACTION PLAN (ECF RRAP) was formulated for and by local governments, federal, regional and state agencies, educational institutions, non-government organizations, and other stakeholders; and

WHEREAS, the ECF RRAP recognizes the clear relationship between emergency management, planning, health & safety, and economic development and aims to continue to fill gaps within the region and pursue initiatives that will achieve measurable improvements in risk reduction and the building of resilience in the region; and

WHEREAS, the Fixing America's Surface Transportation (FAST) Act calls for transportation planning to consider and implement resiliency in their planning and to reduce vulnerability in existing infrastructure; and

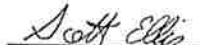
WHEREAS, the Brevard County Board of County Commissioners recognizes resiliency and the success of the ECF RRAP depends on the participation of and collaboration with all local jurisdictions and partners, and a commitment to work together towards common goals; and

WHEREAS, the Space Coast Transportation Planning Organization unanimously adopted a nearly identical resolution on Thursday, March 14, 2019.

NOW, THEREFORE, BE IT RESOLVED, THAT THE BOARD OF COUNTY COMMISSIONERS OF BREVARD COUNTY, FLORIDA, agrees to adopt the EAST CENTRAL FLORIDA REGIONAL RESILIENCY ACTION PLAN to advance the direct implementation of activities aimed to improve safety, long-term resilience, and sustainability in the unincorporated portions of Brevard County, across sectors, expand economic sustainability and response to vulnerabilities within the community.

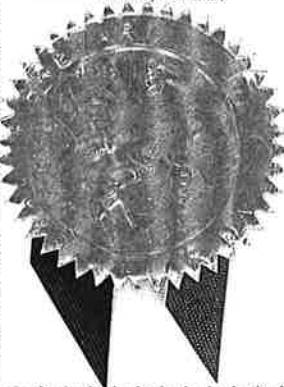
DONE, ORDERED, AND ADOPTED in regular session, this 26th day of March 2019.

ATTEST:

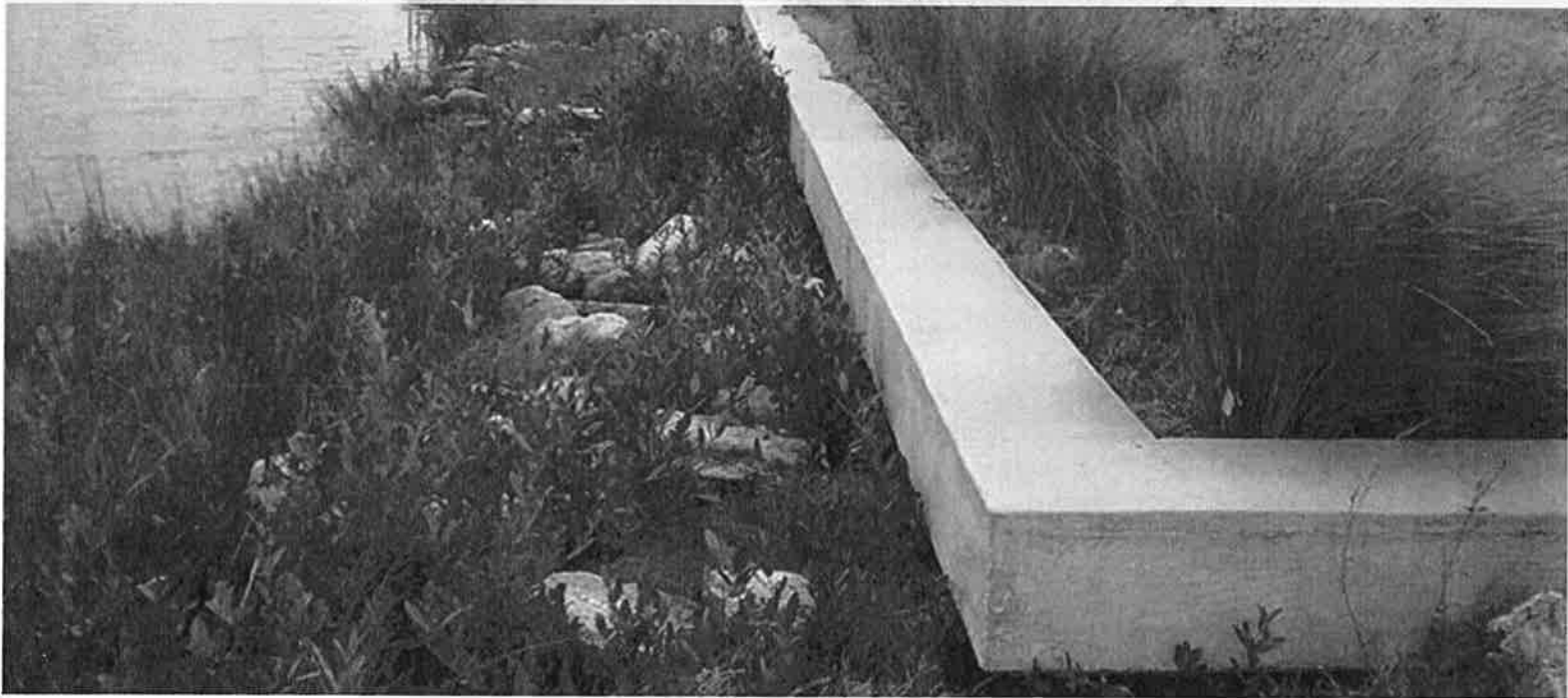

SCOTT ELLIS, CLERK



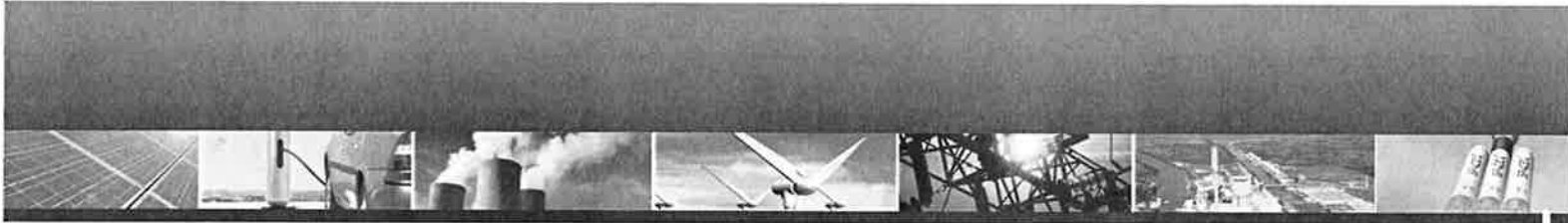
KRISTINE ISNARDI, CHAIR
BOARD OF COUNTY COMMISSIONERS
BREVARD COUNTY, FLORIDA



East Central Florida Regional Resiliency Action Plan



December 2018 | Prepared for Brevard and Volusia Counties by the East Central Florida Regional Planning Council



Project Goals:

- Increase capacity of regional stakeholders resiliency and climate adaptation capacity
- Engage stakeholders
- Obtain support for adoption of the action plan



East Central Florida Regional Resiliency Action Plan Steering Committee

Brevard County GIS	Indian River Lagoon National Estuary Program
Brevard County Planning & Development	League of Women Voters Sustainability Committee
Brevard County Public Works	NASA Kennedy Space Center
Brevard Emergency Management	NOAA Office for Coastal Management
Brevard Natural Resource Management	Patrick Air Force Base
Canaveral Port Authority	River to Sea Transportation Planning Organization
City of Cape Canaveral	RWParkinson Consulting, Inc.
City of New Smyrna Beach	Florida Sea Grant
City of Port Orange	St. Johns River Water Management District
City of Rockledge	Space Coast Transportation Planning Organization
City of Satellite Beach	Stetson University
Erin L. Deady, PA	University of Florida GeoPlan Center
East Central Florida Regional Planning Council	UF IFAS Extension Volusia and Brevard
FEMA	U.S. Army Corps of Engineers
Florida Department of Economic Opportunity	U.S. Department of Agriculture
Florida Department of Environmental Protection	Volusia County Emergency Management
Florida Department of Health in Brevard	Volusia County Growth and Resource Management
Florida Department of Health in Volusia	Volusia County Stormwater
Florida Department of Transportation	Volusia County Environmental Management
Florida Fish and Wildlife Conservation Commission	Volusia County Traffic Engineering
Sustainability Program, Florida Institute of Technology	Volusia County Water Resources and Utilities

Definition

RESILIENCY:

The capacity of individuals, communities, institutions, businesses, and systems within a region to plan, sustain, adapt, recover, improve and grow collaboratively—regardless what kind of **chronic stresses** and **acute shocks** they experience – through specific actions and implementation strategies geared to address specific vulnerabilities.

(adapted from 100 Resilient Cities for the Regional Resiliency Action Plan)

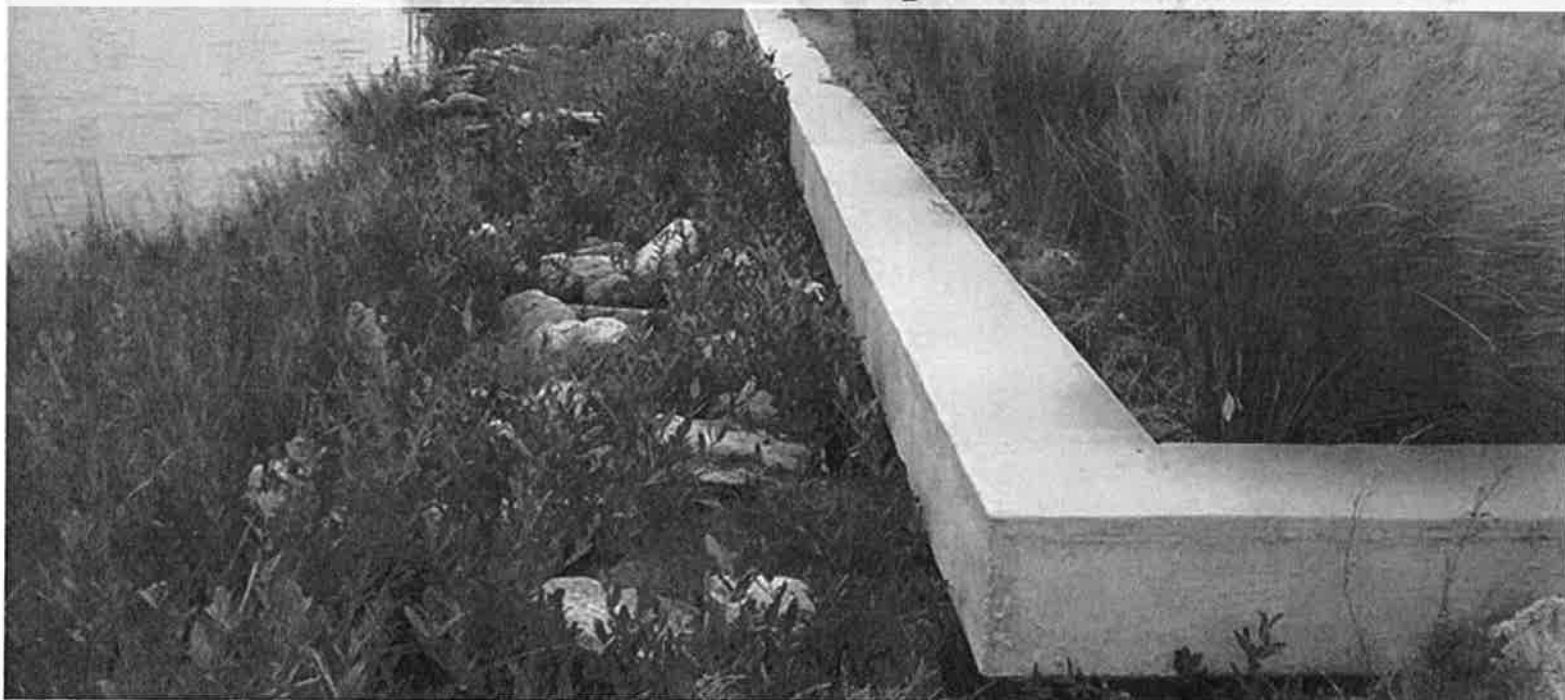


Stakeholder Engagement





East Central Florida Regional Resiliency Action Plan



east central florida
**REGIONAL
RESILIENCY**



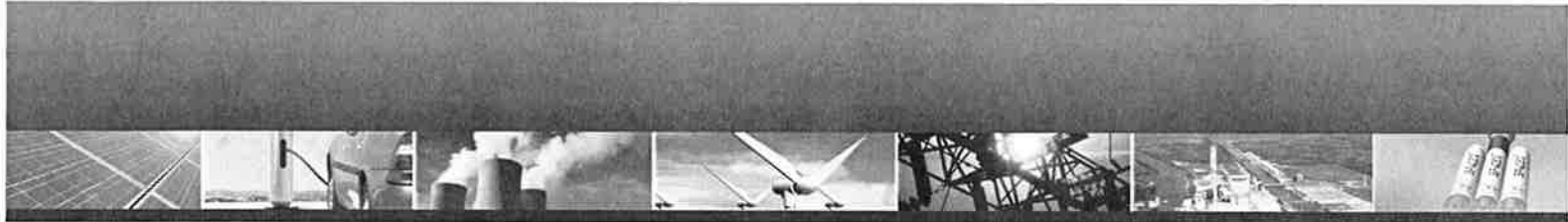
December 2018 | Prepared for Brevard and Volusia Counties by the East Central Florida Regional Planning Council

Framework



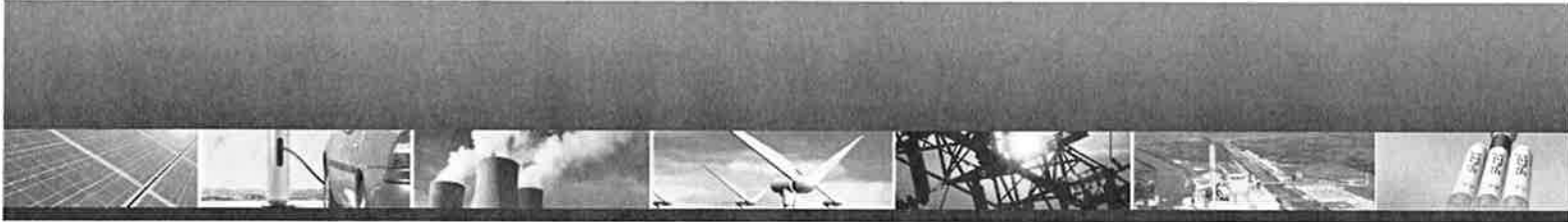
east central florida
**REGIONAL
RESILIENCY**
COUNCIL





Goal 1: Leadership & Strategy - Promote leadership, education and empowerment both in government, and public and private sectors to foster the implementation of resiliency strategies across disciplines and communities.

Goal 2: Economic & Society - Provide opportunities and strategies to foster economic prosperity and improve social equity and justice in preparation for and recovery from stressors and shocks.



Goal 3: Infrastructure & Environment - Encourage development of cross-disciplinary plans, policies and strategies to protect the health, safety and economic welfare of residents, businesses and visitors through recognition that natural disasters, changes to climate, and human manipulation require careful consideration of when and how to develop infrastructure, natural resources and a built environment that can withstand and adapt to these changes.

Goal 4: Health & Well Being - Create resilient communities by facilitating programs, opportunities, and community-wide education pertaining to local sustainability, disaster response, and climate change mitigation strategies.

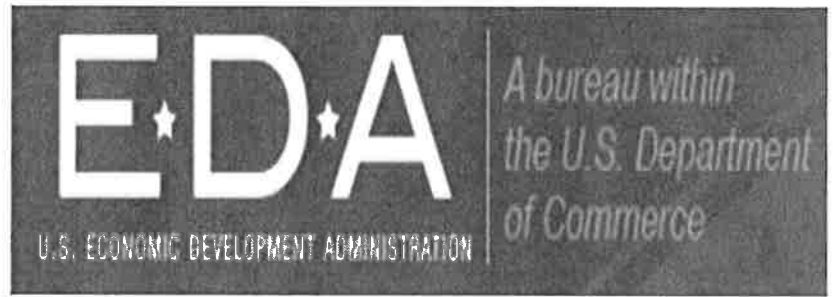
Goal	Objective	Action	Agency or Department	Task	Year	Related Plans
Leadership & Strategy	LS1: Incorporate resiliency into local and regional plans, policies and objectives.	LS1.1	ECFRPC All Jurisdictions	Work with experts, agencies, public, stakeholders and elected officials across the region to develop the framework of a regional collaborative to focus on resilience.	1	
		LS1.2	ECFRPC	Evaluate existing programs as related to regional resilience action programs and plans.	1	
		LS1.3	Planning Department Sustainability Board Brevard County Sustainability Working Group	Create a jurisdiction-wide Sustainability/Resiliency Plan through the recommendations of the Sustainability Board, if applicable.	2	Sustainability Plan
		LS1.4	ECFRPC All Jurisdictions	Formalize the framework of the regional resilience collaborative through resolution.	2	
		LS1.5	All Jurisdictions	Secure a Chief Resiliency and/or Sustainability Officer to coordinate with private and public sectors.	2	
		LS1.6	All Jurisdictions All Agencies	Prioritize the review of all plans, policies and procedures to assess inclusion of resilience strategies or impediments, if not already completed.	3	
		LS1.7	All Jurisdictions All Agencies	Participate in a county-wide workshop to share best practices, needs and progress of local planning in regards to implementing the action plan and other resilience strategies (local level).	4	
		LS1.8	ECFRPC All Jurisdictions	Reassess existing framework and goals of the regional resilience collaborative.	5	
		LS1.9	All Jurisdictions	Reassess indicators established in the local Sustainability/Resiliency Plan.	5	

Goal	Objective	Action	Agency	Task	Year	Related Plans
Health and Wellbeing	HW4: Engage residents and business owners with locally relevant information about expected future changes in natural hazards and sustainable practices.	HW4.1	Emergency Management All Jurisdictions	Develop and implement campaign to include in hurricane preparedness season to communicate dangers of do-it-yourself tasks and home generators with residents.	on-going	CEMP
		HW4.2	Planning Department Building Department Sustainability Board	Evaluate existing programs in other jurisdictions and agencies aimed at educating residents and business owners about imminent natural hazards and sustainable practices, such as the City of Orlando Greenworks, FGBC, PACE.	on-going	Sustainability Plan
		HW4.3	Sustainability Boards IFAS Non-profits	Work with volunteers like religious institutions, clubs, schools etc. for beach clean-up, tree planting, bioswale creation, urban farming and other hands-on events.	ongoing	
		HW4.4	FEMA Sustainability Boards Emergency Management	Conduct in-depth community outreach events outside of the storm season to identify needs and barriers associated with resource accessibility and disaster response.	on-going	CEMP
		HW4.5	Planning Department Building Department Sustainability Programs Public Schools PIO's PIN Joint Info Center	Create a working group of staff and sustainability board to collaborate on the best approach for educating residents and business owners about imminent natural hazards, sustainable practices, and the heat island effect.	1	Sustainability Plan

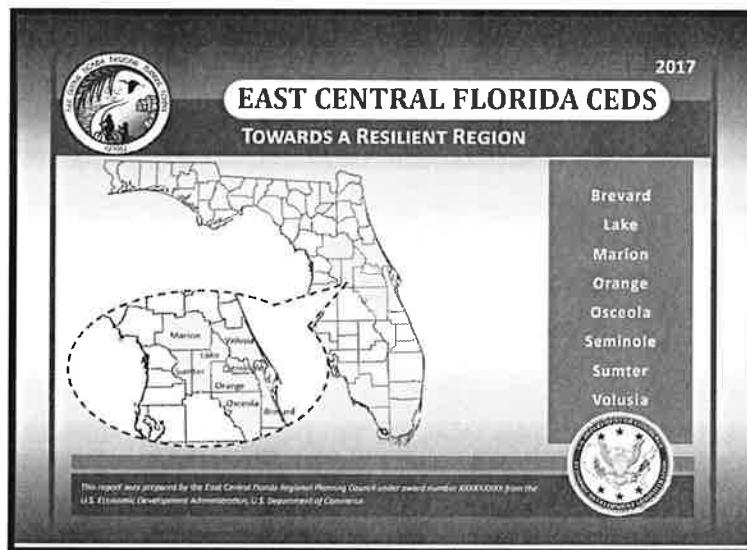


**CENTERS FOR DISEASE
CONTROL AND PREVENTION**

social resilience is the
“resilience of communities
when confronted by external
stressors”



“economic resilience becomes inclusive
of three primary attributes: the ability
to recover quickly from a shock, the
ability to withstand a shock, and the
ability to avoid the shock altogether.”



Socio-Economic Demographics Brevard County Profile

Brevard County is located along the Atlantic coast in Central FL. As a coastal community, the population is subject to environmental vulnerabilities. The *East Central Florida Regional Resiliency Action Plan* developed by ECFRPC and stakeholders across the state provides a framework for the counties of Brevard and Volusia to mitigate the effects of climate change and sea level rise in the areas of business/economic development, emergency response and transportation planning, growth management, health and natural resources.



https://img.besipics.net/images/country/7/_Brevard%20county.png

Table 1: General Demographics - Brevard County

Total Population:	560,683
Change in Population (Census 2000–2010)	+67,146
Expected Population (BEBR 2045)	711,100
¹ Median Home Value (ACS 2012–2016)	\$164,722.20
Median Household Income (ACS 2012–2016)	\$49,914
Number of Jurisdictions	16

Table 2: Potential Vulnerable Populations - Brevard County

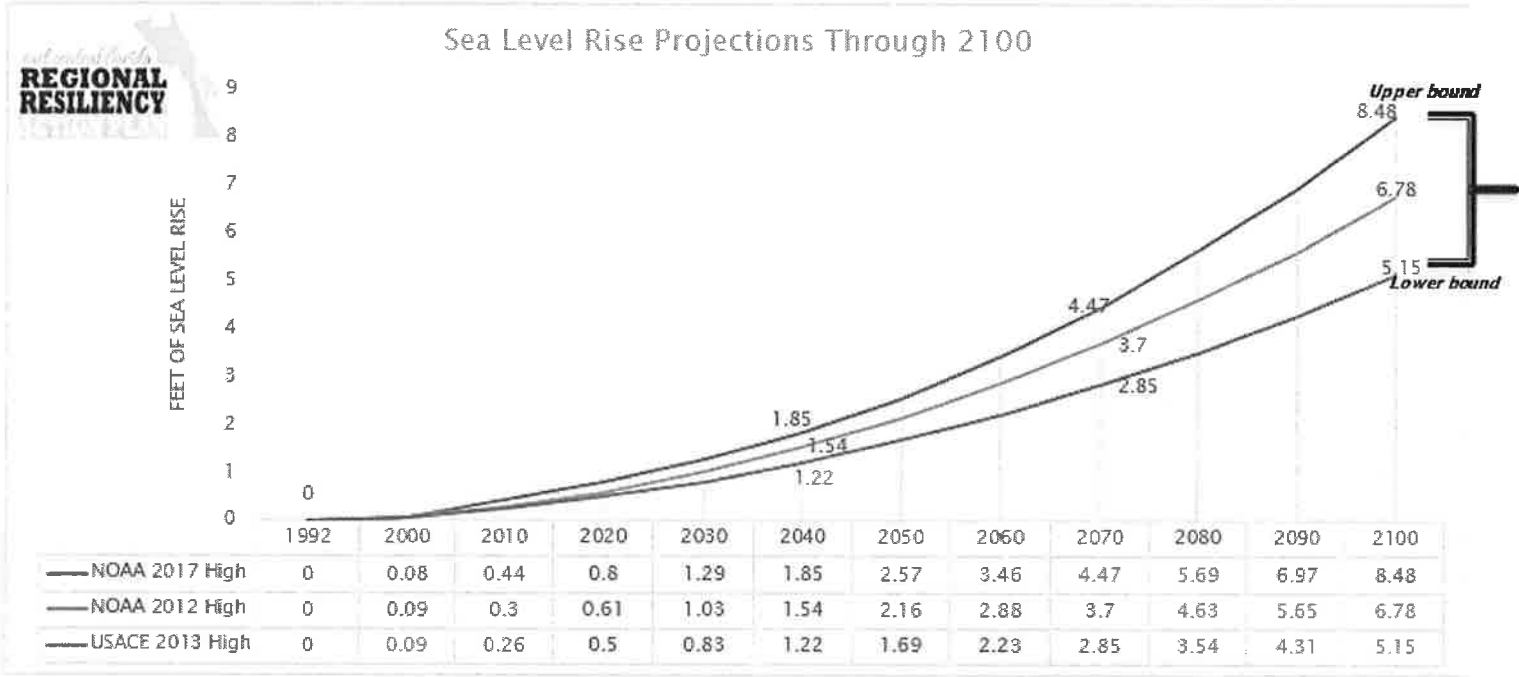
Total Population:	560,683
Families Below Poverty Level (ACS 2012–2016)	14,963
People Below Poverty Level (ACS 2012–2016)	80,126 (14.2%)
Population Age 65 and Over (ACS 2012–2016)	126,104 (22.5%)
² Individuals who speak English less than Very Well (ACS)	18,246 (3.25%)
³ Total Persons Unemployed (ACS 2012–2016)	19,355
Unemployment Rate (ACS 2012–2016)	6.38
Occupied Household with No Vehicle (ACS 2012–2016)	11,174

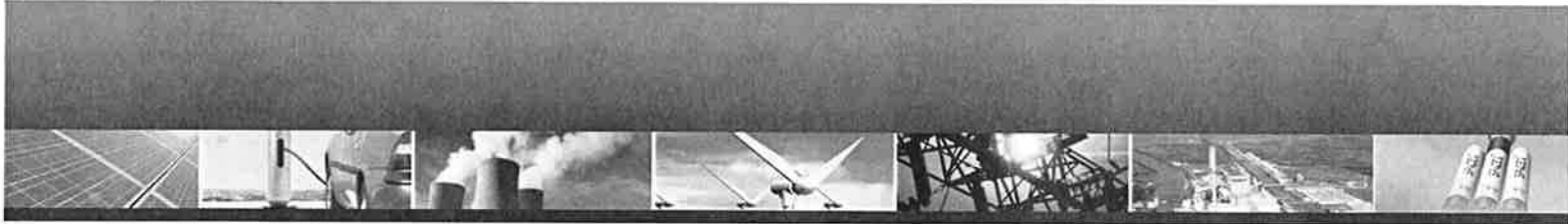
¹ The Census Bureau defines value as the "estimate of how much the property (house and lot, mobile home and lot, or condominium unit) would sell for if it were for sale. For vacant units, value was the price asked for the property"

² Individuals age 5 and older who speak a language other than English at home and who speak English less than very well.

³ The Census Bureau defines the civilian unemployed population as "civilians 16 years old and over are classified as unemployed if they (1) were neither "at work" nor "with a job but not at work" during the reference week, and (2) were actively looking for work during the last 4 weeks, and (3) were available to accept a job.

Figure 2: ECF Regional Resiliency Action Plan Recommended Bounds for Planning for Sea Level Rise; Daytona Beach Shores Tidal Gauge





East Central Florida Regional Resiliency Action Plan Adoption

Since January 2019:

East Central Florida Regional Planning Council
City of Cocoa
Space Coast TPO

Brevard County



East Central Florida Regional Resiliency Action Plan



Tara McCue, AICP
Director of Planning and Community Development
East Central Florida Regional Planning Council
tara@ecfrpc.org
407-245-0300 ext. 327

www.ecfrpc.org
www.perilofflood.net/ecfresiliency

