



Tammy Etheridge, Clerk to the Board, 400 South Street • P.O. Box 999, Titusville, Florida 32781-0999

Telephone: (321) 637-2001  
Fax: (321) 264-6972

January 29, 2015

MEMORANDUM

TO: Euripides Rodriguez, Solid Waste Director

RE: Item I.B., Budget Presentation of Solid Waste

The Board of County Commissioners, in special session on January 29, 2015, authorized staff to not raise the Solid Waste Rates for one more year.

Your continued cooperation is always appreciated.

Sincerely,

BOARD OF COUNTY COMMISSIONERS  
SCOTT ELLIS, CLERK

Tammy Etheridge, Deputy Clerk

/cm

cc: Each Commissioner  
County Attorney



Tammy Etheridge, Clerk to the Board, 400 South Street • P.O. Box 999, Titusville, Florida 32781-0999

Telephone: (321) 637-2001  
Fax: (321) 264-6972

January 29, 2015

MEMORANDUM

TO: Stockton Whitten, County Manager

RE: Item I.B., Budget Presentation of Solid Waste

The Board of County Commissioners, in special session on January 29, 2015, directed staff to have a workshop on the US 192 landfill site within the next 12 months, and to include looking at facilities that would be interested in a franchise.

Your continued cooperation is always appreciated.

Sincerely,

BOARD OF COUNTY COMMISSIONERS  
SCOTT ELLIS, CLERK

Tammy Etheridge, Deputy Clerk

/kg

cc: Solid Waste Director



## ***Solid Waste Management Department***

**To protect public health by providing an efficient and environmentally sound Solid Waste Management System.**

## **Introduction & Background**



In 1967, "The Brevard County Solid Waste Disposal Act" was approved by the Florida Legislature.

- Granted the Board the power to establish a solid waste disposal system.
- Required all entities to use the system, giving the County flow control over the waste stream.

## Introduction & Background



- Granted the Board the authority to issue bonds to finance the system.
- Granted the Board the right to create exclusive franchises to help operate the system.

3

## Introduction & Background



On October 1, 1977, the present system opened its doors with the following facilities:

- The Central Disposal Facility (CDF) with an 80-acre landfill and a shredder plant with tipping floor.
- The tipping floor is still in use today as the "Citizens Drop off Center".



4

## Introduction & Background



- Melbourne Transfer Station, now know as the Sarno Transfer Station.



- Titusville Transfer Station (still in use).

5

## Introduction & Background



Several additions to the system were made through the years, such as:

- In the Late 1970s the County acquired an existing 100-acre landfill next to the Melbourne Transfer Station.

6

## Introduction & Background



- In the early 1990's a 2,980-acre property was added for future expansion of the system (a.k.a.US192 site).
- Mockingbird Way Recycling Facility was built in the mid 1990's to provide service in the north portion of the county (Titusville) for yard waste , white goods and other disposal items.

7

## Waste Streams



- Class I Waste
  - Household garbage
    - Collected curbside.
    - Receive directly from homeowners at the Central Disposal Facility (CDF), Sarno Transfer Station and the Titusville Transfer Station.
  - Commercial Waste
    - Collected by franchise haulers.
    - Receive directly from businesses at CDF, Sarno Transfer Station and the Titusville Transfer Station.

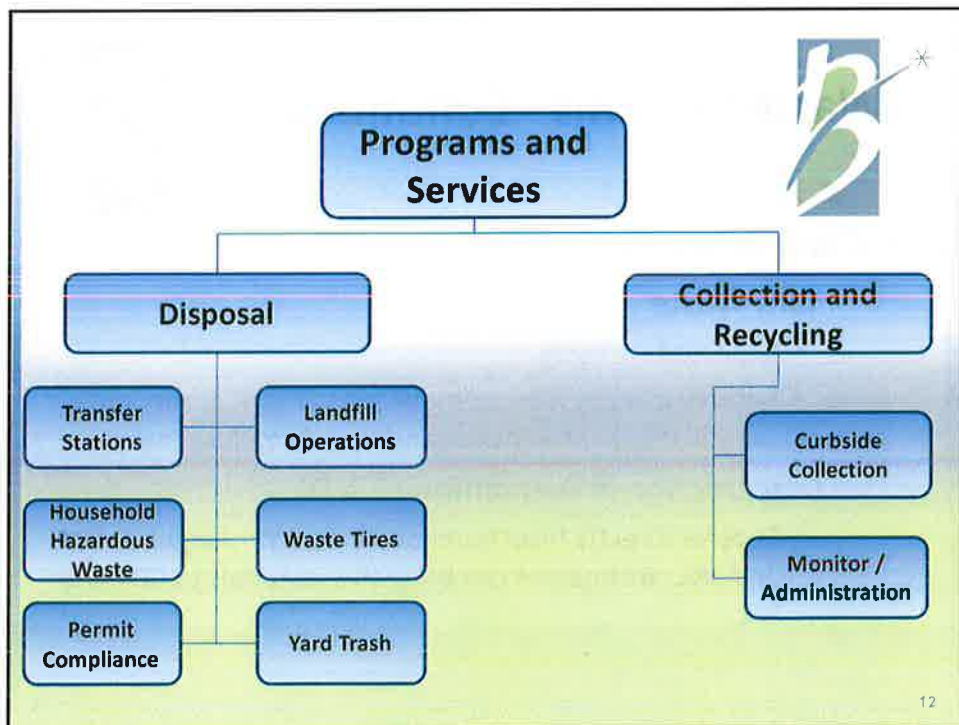
8



## Waste Streams - Continued



- **Class III Waste**
  - **Yard Waste**
    - Collected curbside .
    - Receive directly from homeowners at CDF, Sarno Road Landfill (SRL) and Mockingbird Way Recycling Facility.
  - **Construction & Demolition (C & D)**
    - Receive directly from homeowners at Mockingbird, CDF and SRL. Businesses can bring the materials to CDF and SRL.



## Disposal Municipal Service Benefit Unit



- Consists of all improved property in Brevard County (except for Patrick Air Force Base, Cape Canaveral Air Force Station and Kennedy Space Center) receiving the benefits of disposing of municipal solid waste in Brevard County.
  - Two landfills
    - Sarno Road Landfill – Class III (Non-putrescible items)
    - Central Disposal Facility – Class I (regular garbage)

13



**Central  
Disposal Facility  
2014 Aerial  
Photo**

14

## Services Rendered at CDF



- Disposal of Class I and Class III materials.



- Yard waste is mulched and retained at the facility for use as cover material.



15

## Services Rendered at CDF



- Tires are collected and sent out of the county and currently converted to tire mulch.



- Metals and white goods are collected and sold for recycling.



16

## Services Rendered at CDF



- Cardboard is collected and sold.
  - We recycled 219 tons.
  - Revenue of \$18,962.78.
  - Two balers funded in less than 2 years.



- Household Hazardous Waste Collection Centers are for materials originating from residential properties.



17

## Other Activities at CDF



- Maintenance – We maintain our fleet and facilities.
- Landfill Gas to Energy – In partnership with Brevard Energy Services the plant burns the landfill gas for conversion to electricity sufficient to power 5,668 homes.



18

## Capital Improvement Projects at CDF



- New Scalehouse Entrance – The new entrance will repair a portion of Adamson Road and build a new scalehouse further into the property improving vehicular traffic on Adamson Road.
- CDF Expansion Cell 1 – A 42-acre cell located just south of the existing slurry wall landfill. Current landfill is expected to run out of space in 2017. New cell should last at least five years.

19

## Services Rendered at Mockingbird Facility



- Yard waste is mulched. It is also given free to any resident. The remaining product is sent to the Wheelabrator Plant located in Polk County for burning to produce electricity.



20

## Services Rendered at Mockingbird Facility



- Citizens Drop-Off for construction and demolition materials originating from residences.

- Metals and white goods are collected and sold for recycling.



21

## Services Rendered at Mockingbird Facility



- Household Hazardous Waste Collection Centers are for materials originating from residential properties.



22

## Services Rendered at Titusville Transfer Station



- Receives and transfers Class I waste from the north areas of the county to the Central Disposal Facility. This transfer station has been in operation since October 1977.



23



## Sarno Road Landfill 2014 Aerial Photo

24

## Services Rendered at Sarno Road Landfill



- Receives Class III materials for disposal.



- Currently building a ten-acre expansion where the north lake was located.

25

## Services Rendered at Sarno Road Landfill



- Yard waste is mulched and retained at the facility for use as cover material. It is also given free to any resident. The remaining product is sent to the Wheelabrator Plant located in Polk County for burning to produce electricity.



26

## Services Rendered at Sarno Road Landfill



- Tires are collected and sent out of the County. It is currently converted to tire mulch.



- Metals and white goods are collected and sold for recycling.



27

## Services Rendered at Sarno Transfer Station



- Receive and transfer Class I waste from the south areas of the county to the Central Disposal Facility.
- Cardboard is collected and sold.



28

## Services Rendered at Sarno HHW

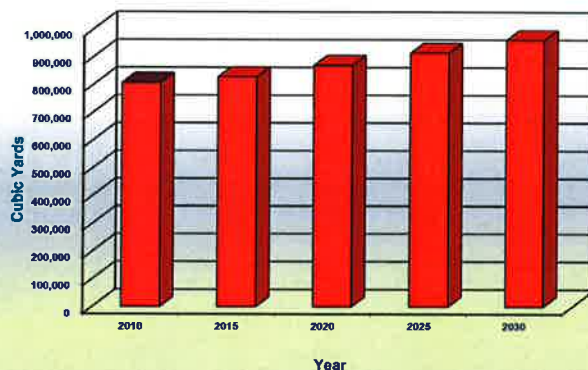


- Household Hazardous Waste Collection Centers are for materials originating from residential properties.



29

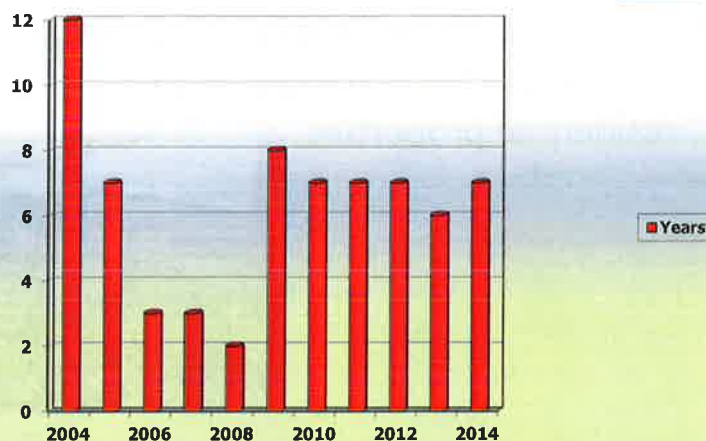
## 20-Year Class III Waste Projections



19% Growth  
during the  
next 20  
years.

30

## Prior Life Projections Sarno Road Landfill



31

## What Does This Mean?



- Sarno Road Landfill will reach the end of its life in 2021 with the expansion currently being built. Less, if the City of Melbourne does not issue a height variance. With no variance the capacity is reduced by more than one year.
- When we near the end of landfill capacity, we will need to relocate the following services to US 192 because of height limitations:
  - Tires
  - Yard Waste
  - Metals
- The US 192 site remains a critical asset to ensure long-term disposal capacity for our residents.


32



OSCEOLA COUNTY  
BREVARD COUNTY


US 192 SOLID WASTE  
MANAGEMENT FACILITY  
PROPERTY LINE

US 192



## US 192 Aerial Photo

33



## US 192 Project

- Site consists of 2,980 acres.
- Construction will occur in two phases:
  - Phase I
    - Class III cell
    - Stormwater
  - Phase II
    - Class I cell

34

## US 192 Project



- Design will be completed for Phase I within the next year.
- Late spring of 2015 the following are schedule to be submitted:
  - Brevard County – Site Plan Approval.
  - Consumptive Use Permit.
  - FDEP – NPDES permit.
  - Construction Dewatering Permit.
  - Cattle pen area assessment and remediation plan.

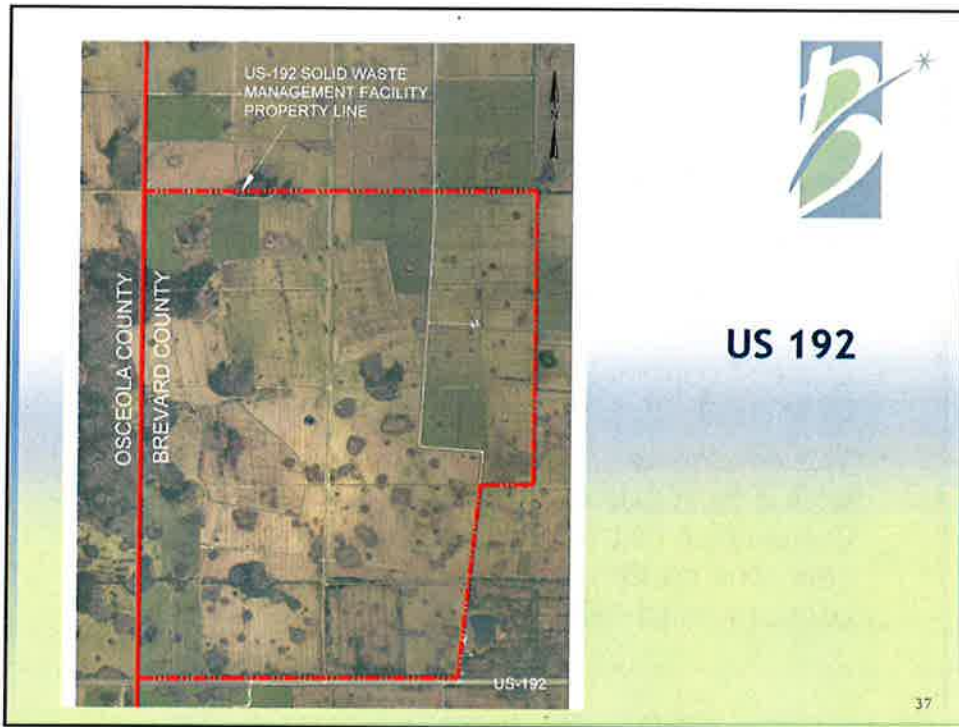
35

## US 192 Project Status – Cont.



- The Solid Waste permit has been issued.
- Construction will last about two years starting in 2017.

36



## Collection Municipal Service Benefit Unit



- Collection/Recycling MSBU – consists of all residential properties receiving collection services in the unincorporated areas of Brevard County and regulates the rates charged to collection of commercial properties.
  - No employees are paid from this fund.
  - Residential Collection Contract.
  - Regulates the rates charged to commercial properties.
  - Pays for Disaster Debris Collections.

## Collection (Unincorporated)



- The County is divided into two contract areas.
- Both are currently held by Waste Management of Florida, Inc.
- Current contract is for seven years (started October 1, 2013) with a three year extension.
- The county uses a cart system which is collected with a fleet powered by compressed natural gas. Conversion of the fleet will be finished by next year. The south area has completed the conversion to CNG.

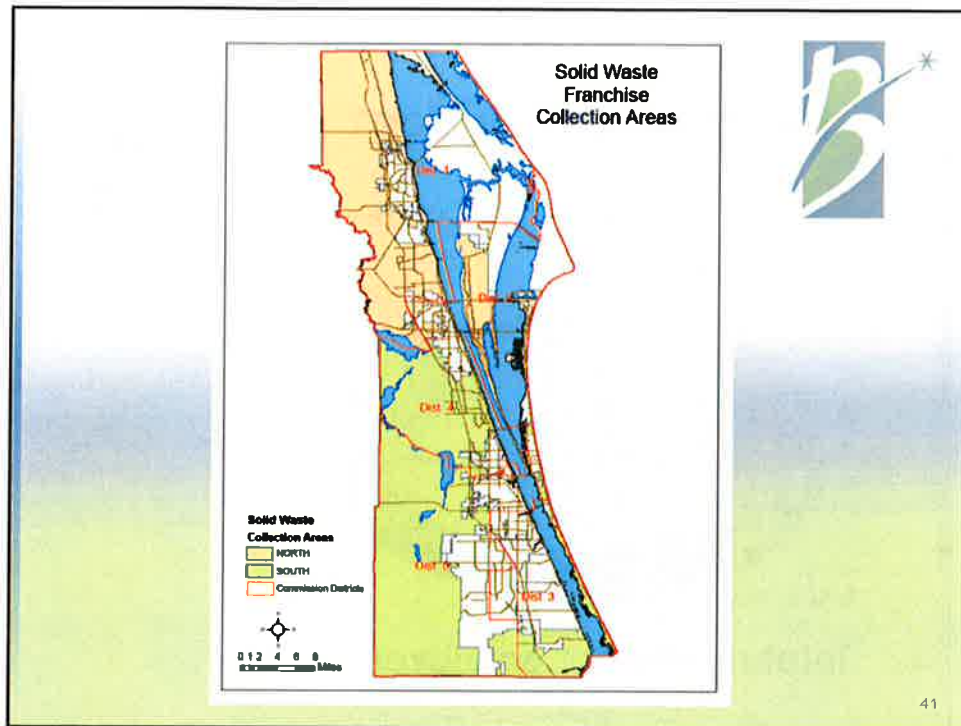
39

## Collection (Unincorporated)



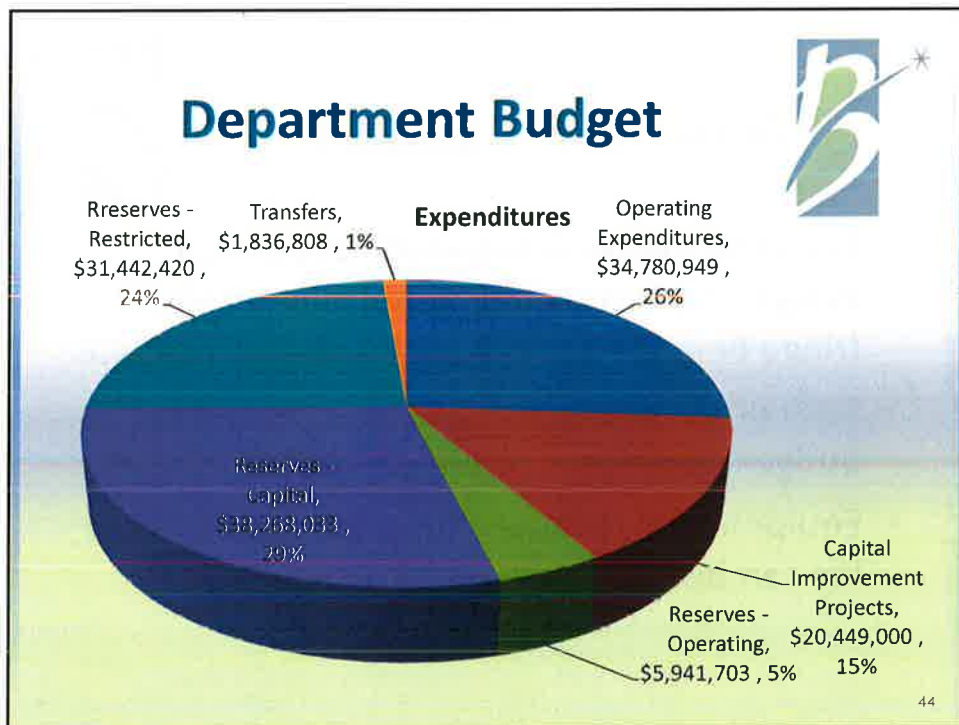
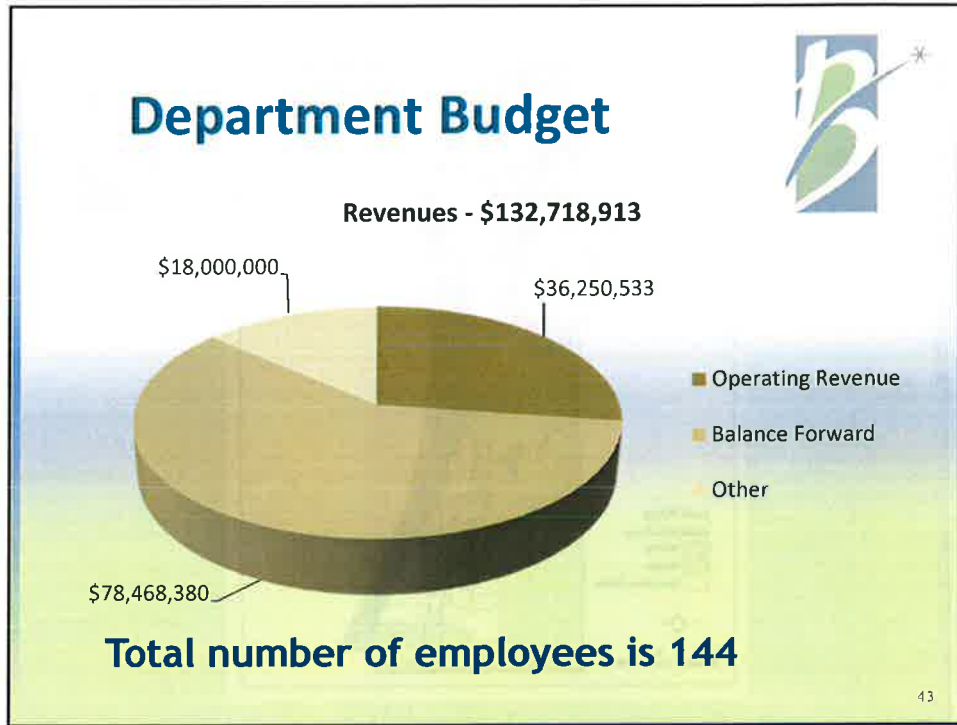
- A material recovery facility (MRF) located in Cocoa is receiving our recyclables.
- We receive 40% of the sale of the materials. This money stays in the Collection fund.

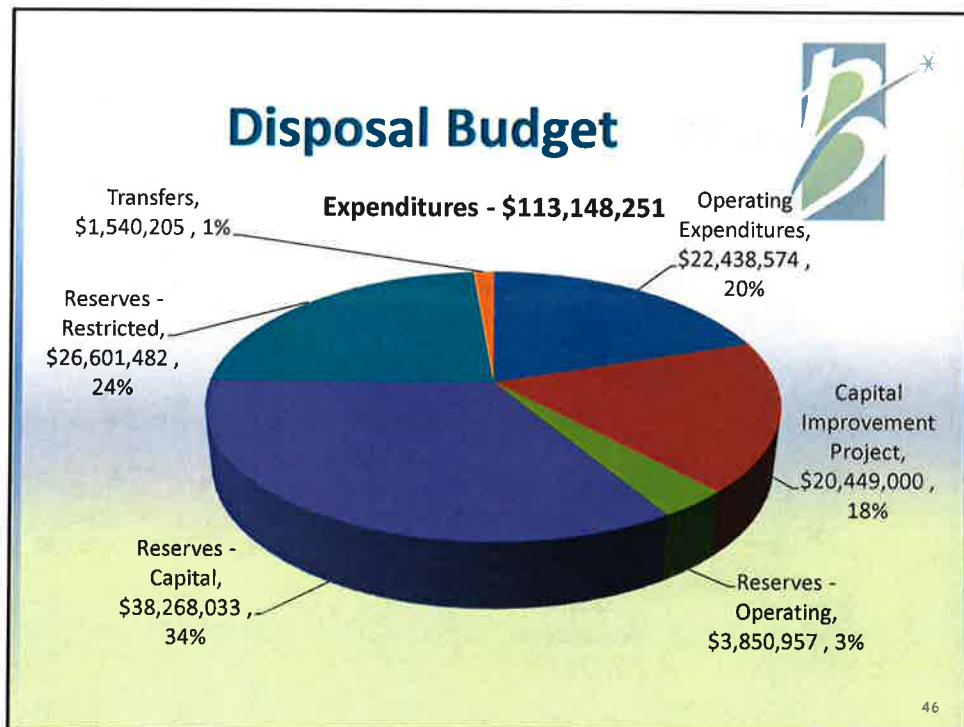
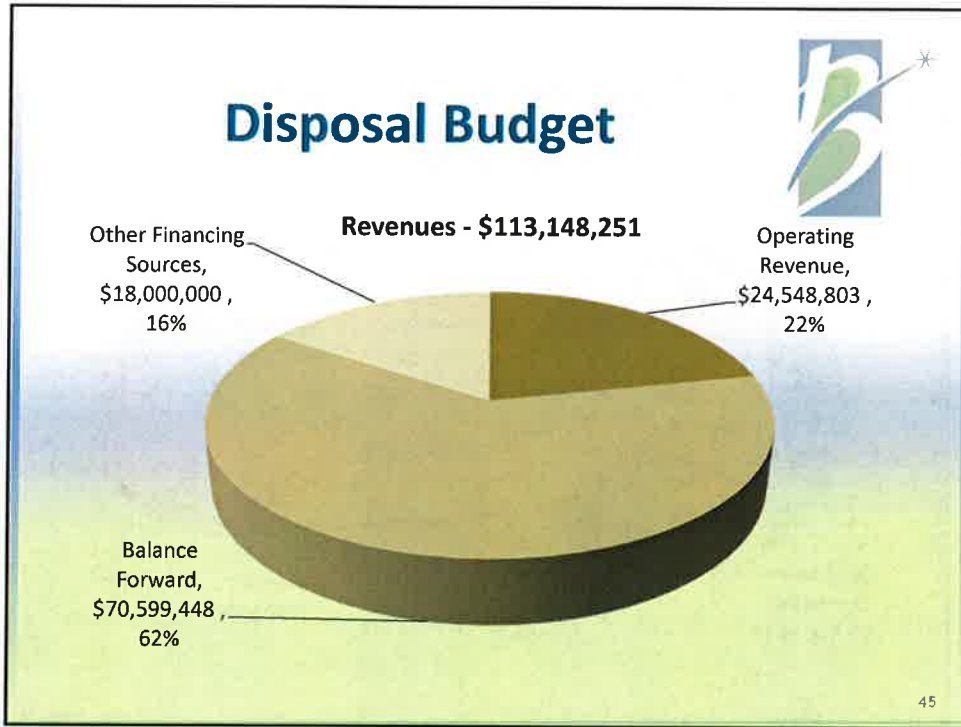
40

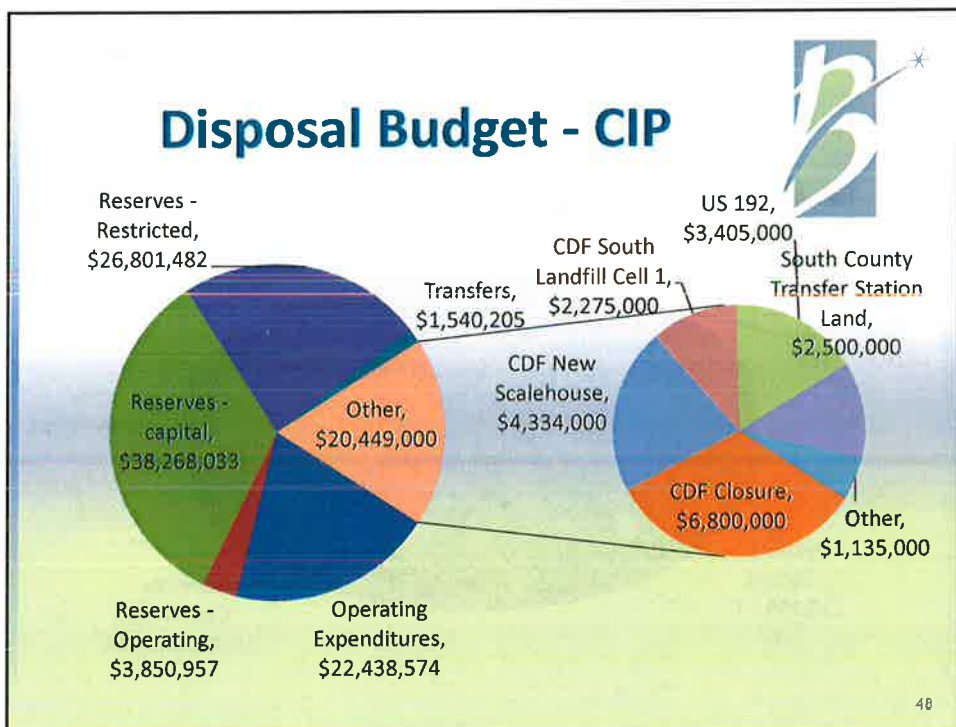
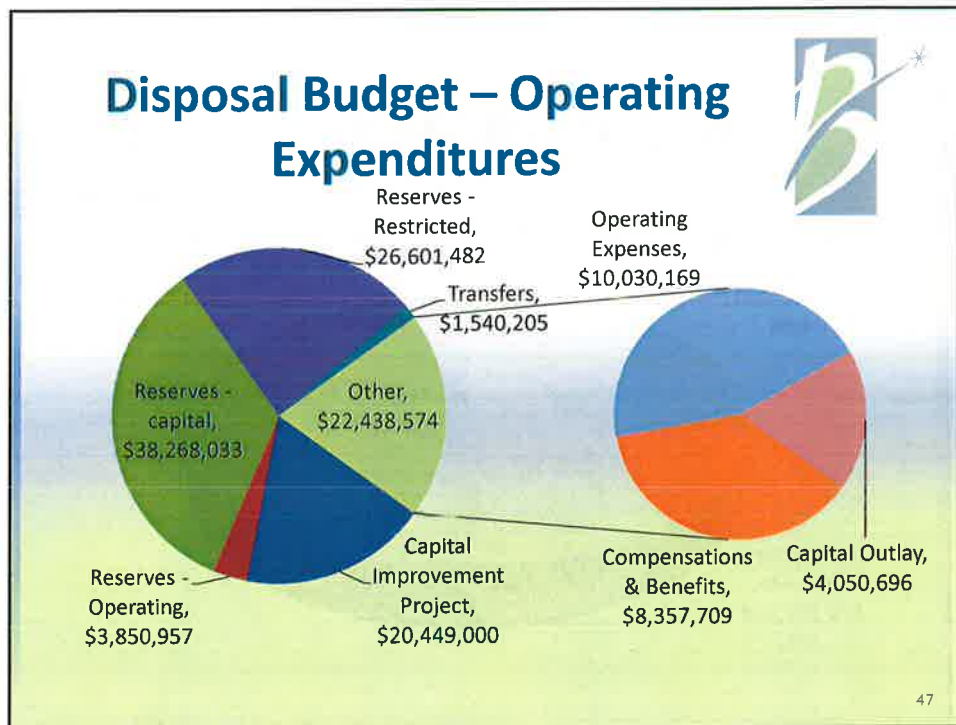


## Department Budget

- Each cost center is required to submit a budget request by line item (salaries and fringe benefits are exempt) with justifications.
- Each originator is required to defend the budget which they are responsible for.
- Equipment is reviewed for determining if the life can be extended.







## Disposal – Trends & Issues



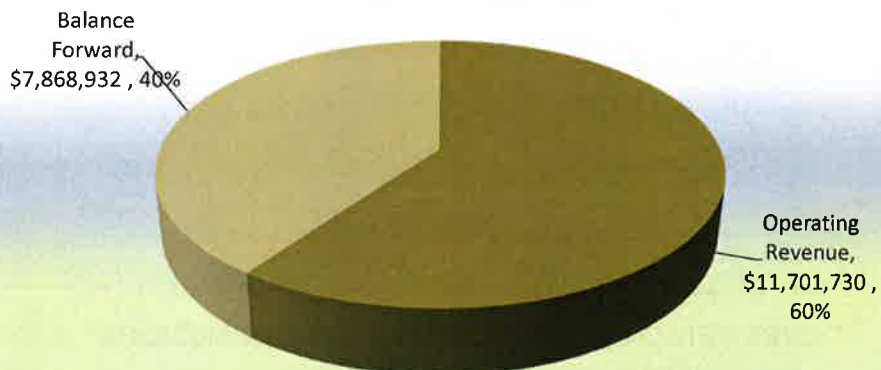
- Cell 1 Central Disposal Facility (expansion area)
- Complete construction of new scalehouse, entrance road and improvement to Adamson Road
- US 192 Permitting & Construction

49

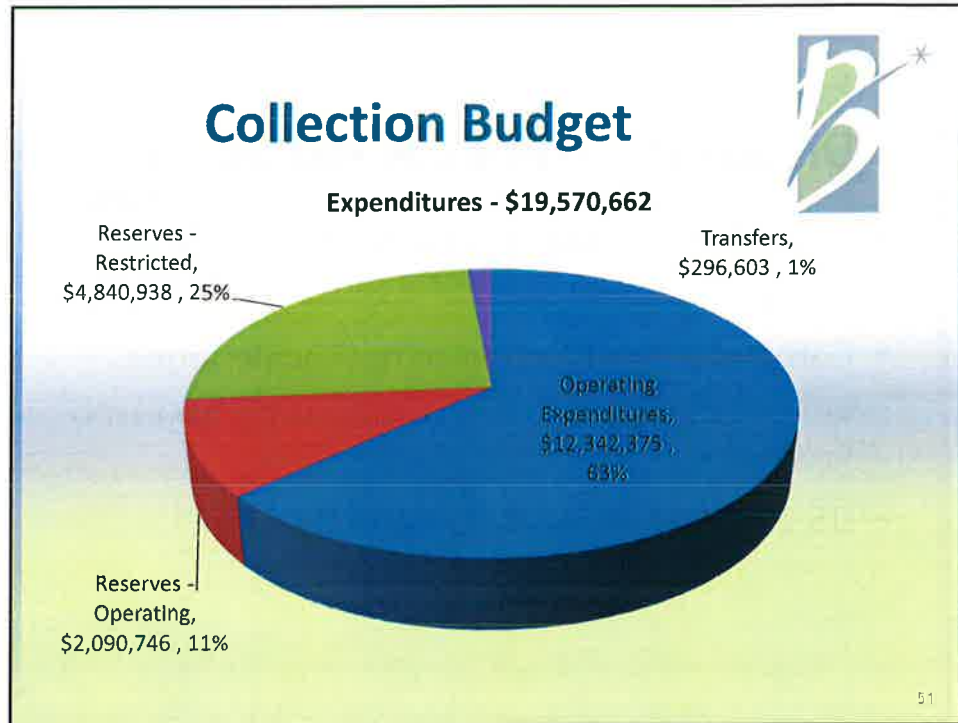
## Collection Budget



Revenues - \$19,570,662



50



- ### Collection – Trends & Issues
- Meeting Future Recycling Goals.
    - 60% by 2016.
    - 70% by 2018.
    - 75% by 2020.
  - In 2012 Waste Management of Florida, Inc. was selected as a finalist for negotiations through RFP process.
- 52

## Residential Rates - Municipalities



Municipality	Level of Service <sup>1</sup>	Collection Contract Rate FY 2013	Type of Garbage Collection
Cape Canaveral	2-1-1	\$9.30	Semi-automated
Melbourne	2-1-1	\$10.39	Automated (SW)
West Melbourne	2-1-1	\$10.53	Automated (SW)
<b>Brevard County - Negotiated</b>	<b>2-1-1</b>	<b>\$10.55</b>	<b>Automated (SW)</b>
Cocoa	2-1-1	\$10.72	Automated (SW & YW)
Cocoa Beach	2-1-1	\$11.63	Automated (SW)
Indian Harbour Beach	2-1-1	\$13.70	Automated (SW)
Palm Shores	2-1-1	\$14.25	Semi-automated
Malabar	2-1-1	\$14.42	Manual
Melbourne Village	2-1-1	\$14.71	Manual
Satellite Beach	2-1-1	\$15.14	Automated (SW & YW)
Melbourne Beach	2-1-1	\$15.17	Semi-automated
Indianalantic	2-1-1	\$16.24	Automated (SW & YW)
Grant Valkaria	2-1-1	\$19.65	Semi-automated

1 - Level of service = number of collections each week (e.g., 2-1-1 = 2/week garbage, 1/week recycling, and 1/week yard waste).

53

## Residential Rates – Other Florida Counties



County	Level of Service	Contract Rate FY 2013	Type of Garbage Collection	Type of Recycling Service	Commercial Included in Contract?
Hillsborough County	2-1-1	\$11.22	Manual	Dual Stream Bins	Yes, franchisees compete
		\$10.65			
		\$11.42			
Indian River County	2-1-1	\$16.61	Subscription, Manual	Dual Stream Bins	Yes
Osceola County	1-1-1	\$16.25	Manual	Single Stream Automated 96 Gal	Selected from 11 approved haulers
Orange County	2-1-1	\$15.49	Manual	Dual Stream Bins	No
		\$14.91			
		\$15.49			
		\$14.83			
		\$15.28			
Seminole County	2-1-1	\$12.50	Manual	Dual Stream Bins	No
		\$11.95			
		\$13.72			
Volusia County	1-1-1	10.67	Semi-automated	Dual Stream Bins	Selected from 7 approved haulers

## Collection – Trends & Issues



- Implementation of 2013 Collection contract – CNG trucks for the north.
- Rates were approved for two years.
  - 0% increase in year one.
  - 3% increase in year two.

55

## Collection – Trends & Issues



- In 2015 the Board of County Commissioners will vote on contractually required increases.
  - The past approved rates resulted in a decrease of \$430,000 in the disaster reserves.
  - The current reserves are \$4.84M. The level of disaster reserves will determine when the next rate increase will be needed.

56