



# Agenda Report

2725 Judge Fran Jamieson  
Way  
Viera, FL 32940

## Consent

---

F.1.

2/6/2020

---

### **Subject:**

Approval Re: Preliminary Development Plan (PDP) amendment to the Bella Vita PUD (Tax Account #2410377) (District 2)

### **Fiscal Impact:**

None

### **Dept/Office:**

Planning and Development

### **Requested Action:**

Staff is requesting the Board approve a reduction of 11 feet to the 25 foot perimeter buffer requirement to allow a new pumphouse to be constructed at 14 feet from the Hall Road right-of-way (ROW) within the Bella Vita PUD's Preliminary Development Plan (PDP).

### **Summary Explanation and Background:**

Brevard County Code 62-1448(d)4 requires a 25foot perimeter setback unless the Board of County Commissioners approves a reduced setback on the PDP. Based on the existing stormwater facilities and environmental constraints, the new pump house building, needs to be closer than what the Code allows for without a waiver from the Board. The proposed new building will be 14 feet from the ROW for Hall Road. The new building and other facilities are needed to provide additional stormwater capacity.

### **Clerk to the Board Instructions:**

None



February 7, 2020

MEMORANDUM

TO: Tad Calkins, Planning and Development Director

RE: Item F.1., Preliminary Development Plan (PDP) Amendment to the Bella Vita PUD (Tax Account #3410377)

The Board of County Commissioners, in regular session on February 6, 2020, approved the reduction of 11 feet to the 25-foot perimeter buffer requirement to allow for a new pump house to be constructed at 14 feet from the Hall Road right-of-way within the Bella Vita PUD's Preliminary Development Plan (PDP).

Your continued cooperation is always appreciated.

Sincerely,

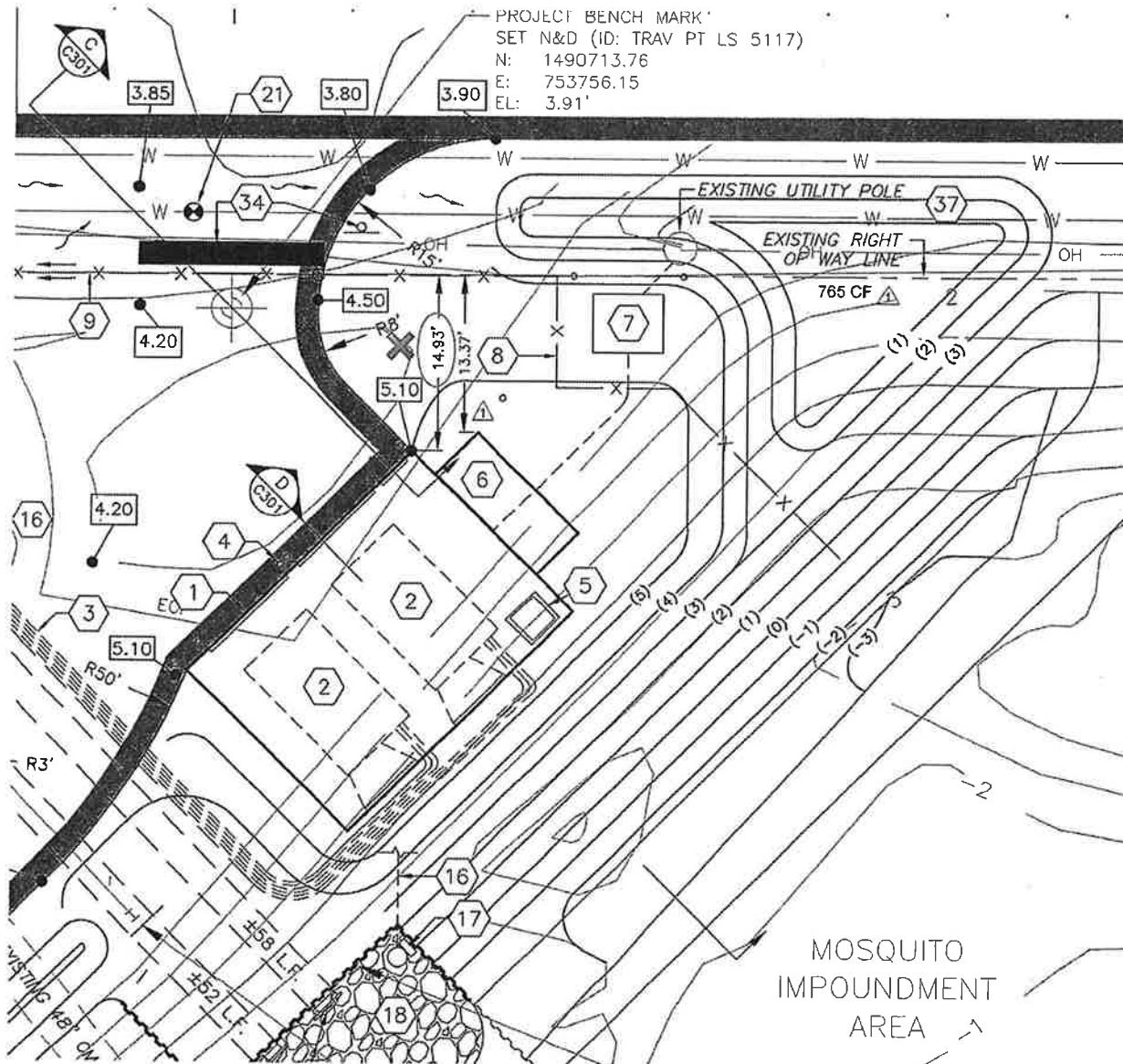
BOARD OF COUNTY COMMISSIONERS  
SCOTT ELLIS, CLERK

*Tammy Rowe*

Tammy Rowe, Deputy Clerk

/ds





- 11 PROVIDED ENGINEER'S PILE SYSTEM, SY ALUMINUM WALL
- 12 8.5' SEGMENTAL
- 13 TRIM/EXTEND EX
- 14 TRASH SCREEN.
- 15 19"x10"x6" CONC
- 16 SENSOR WIRE W
- 17 STAFF GAUGE (F
- 18 PUMP SHUTOFF HEADWALL OR S
- 19 PROPOSED 34"x6" SEE PIPE THRO
- 20 FITTINGS AS REC CONTRACTOR TO PROPOSED PIPE MODIFICATIONS
- 21 PROPOSED LINE
- 22 NO LINSTOPS R
- 23 EXISTING VALVE
- 24 12" TAPPING SLE
- 25 12" WATER MAIN MAIN TO BE INST WATER MAIN.
- 26 MILL AND RESUR
- 27 OPEN CUT AND F